

Four 12V solar container lithium battery packs connected in series





Overview

How to connect lithium solar batteries in series?

Connecting Lithium Solar Batteries in Series: To connect lithium solar batteries in series, you simply link the negative pole of one battery to the positive pole of the next battery. This ensures that the same current flows through all the batteries. The total voltage of the series connection is the sum of the individual voltages.

How to connect lithium solar batteries in parallel?

Connecting Lithium Solar Batteries in Parallel: When connecting batteries in parallel, the positive terminals are connected together, and the negative terminals are connected together. The ampere-hour capacity of the individual batteries adds up, while the total voltage remains the same as the individual batteries.

What is the purpose of connecting lithium solar batteries in series?

The main purpose of connecting lithium solar batteries in series is to increase the output voltage. By adding up the voltages of the individual batteries, you can power devices that require higher voltage amounts. For example, connecting two 24V 100Ah batteries in series will result in a combined voltage of 48V while maintaining the same capacity.

How many batteries can a 48V 100Ah battery connect in parallel?

For instance, connecting two 48V 100Ah batteries in parallel will give you a battery with a capacity of 200Ah, while maintaining the same voltage. It's crucial to connect batteries of the same voltage and energy density in parallel.

Connecting Lithium Solar Batteries in Series:



Four 12V solar container lithium battery packs connected in series



[Lithium Series, Parallel and Series and Parallel](#)

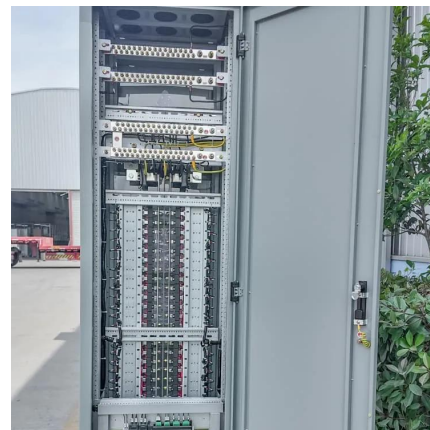
Introduction1. What is a BMS? Why do you need a BMS in your lithium battery?The lithium battery BMS, its design and primary purpose:2. How to connect lithium batteries in series4. How to charge lithium batteries in parallel4.1 Resistance is the enemy4.2 How to charge lithium batteries in parallel - from bad to best designsLithium battery banks using batteries with built-in Battery Management Systems (BMS) are created by connecting two or more batteries together to support a single application. Connecting multiple lithium batteries into a string of batteries allows us to build a battery bank with the potential to operate at an increased voltage, or with increased capacity. See more on assets.[discoverbattery](#)
[gycxsolar](#)

Can Solar Batteries Be Connected in Series?

Apr 27, 2025 · A 48V solar system might use four 12V batteries connected in series, which would result in a total voltage of 48V. Parallel connections ...

[Can lithium battery cells be connected in series?](#)

Jul 24, 2025 · Wear appropriate protective gear, and make sure the connections are tight and secure. In conclusion, connecting lithium battery cells in series is a great way to achieve a ...



[Can Solar Batteries Be Connected in](#)



[Series?](#)

Apr 27, 2025 · A 48V solar system might use four 12V batteries connected in series, which would result in a total voltage of 48V. Parallel connections can then be used to increase capacity ...

[Lithium Solar Batteries Series vs Parallel Connection](#)

Apr 27, 2025 · Lithium solar batteries are essential components of solar energy systems, providing reliable energy storage for various applications. Understanding how to connect these ...



[Helpful Guide to Lithium Batteries in Parallel and Series](#)

Apr 23, 2024 · Understand how to connect lithium batteries in parallel and series. Get practical tips and avoid common pitfalls. Start optimizing your battery setup today!



[Connect LiFePO4 Batteries in Series: Expert Guide for 12V ...](#)

Apr 29, 2024 · Learn how to safely and efficiently connect LiFePO4 batteries in series to achieve higher voltages (e.g., 12V to 24V). This expert guide covers technical insights, advantages, ...





[Batteries in Series vs Parallel: Understand The Differences](#)

Nov 18, 2025 · For example, a 24V 200Ah system might use four 12V 100Ah batteries - two parallel sets of two batteries in series. This combines the benefits of both configurations.

[Lithium Series, Parallel and Series and Parallel](#)

Mar 23, 2021 · Lithium Series, Parallel and Series and Parallel Connections Introduction Lithium battery banks using batteries with built-in Battery Management Systems (BMS) are created by ...



[How many 12V lithium battery packs should be ...](#)

When connected in parallel, four 100-watt panels with a combined maximum voltage of 17.9 volts could generate 17.9 volts. The same panels could generate 71.6 volts when connected in ...

[How to Connect LifePo4 Batteries in Series/Parallel \(or a ...](#)

May 31, 2024 · If you need a higher voltage, you can add more batteries in series to meet your requirements. For example, a typical off-grid solar system designed for a large home might ...





Contact Us

For catalog requests, pricing, or partnerships, please visit:
<https://www.llsolarenergy.co.za>

Scan QR Code for More Information



<https://www.llsolarenergy.co.za>