

# **Grid-connected 6kW single-phase inverter**





## Overview

---

What is an Hyi solar inverter?

The AN-HYI series parallel hybrid solar inverter is a high-performance, IP65-rated 6kW single-phase solar inverter designed for reliable solar energy storage and intelligent power management.

What is an IP65 hybrid inverter?

Combining weatherproof durability with advanced energy control, this IP65 on/off grid hybrid inverter ensures efficient operation in diverse environments while maximizing solar self-consumption and backup power capabilities.

What is a Bluesun hybrid solar inverter?

The Bluesun Hybrid Solar Inverter 6kW is a versatile and compact multi-functional solution, seamlessly integrating an inverter, solar charger, and battery charger into one powerful unit. Designed to provide uninterrupted power supply, this inverter maximizes the efficiency and output of your solar system.

What is anern an Hyi solar inverter?

Anern AN-HYI series on grid off grid hybrid solar inverter is a high-performance, IP65-rated single-phase solar inverter. Designed for reliable solar energy storage and intelligent power management. Contact Anern to buy this 6kw single phase solar inverter now!



## Grid-connected 6kW single-phase inverter



### [High Conversion Rate S6-GR1P\(2.5-6\)K-4G 5kw 6kw Grid- connected ...](#)

2.5-6kW Single-phase series string inverter's efficiency has improved dramatically. Solis-1P(2.5-6)kW-4G series are suitable for the installation of single-phase input pv system of residential ...

### [Bluesun Hybrid Solar Inverter 6Kw 48V Single Phase](#)

2 days ago · The Bluesun Hybrid Solar Inverter 6kW is a versatile and compact multi-functional solution, seamlessly integrating an inverter, solar charger, and battery charger into one ...



### [IP65 6KW Single Phase On Off Grid Hybrid Solar Inverter](#)

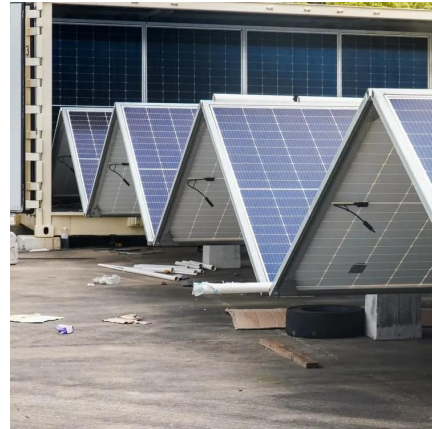
The AN-HYI series parallel hybrid solar inverter is a high-performance, IP65-rated 6kW single-phase solar inverter designed for reliable solar energy storage and intelligent power ...

### [S6-GR1P \(2.5-6\)K-S PV string inverter\\_ Residential inverters](#)

S6-GR1P (2.5-6)K-S series inverter is designed for residential PV plants. The maximum input current per string is 16A, which is compatible with high-efficiency modules and bi-facial



modules.



### [H6000-EU 6kW Single-phase Hybrid Inverter - Hinen](#)

Hinen H6000-EU is a 6kW single-phase hybrid inverter which designed for solar systems, integrating PV, battery, loads, and grid for efficient energy management. It optimizes ...

### [ONESTO One Phase Grid-connected Inverter , IEC61000 CEI021](#)

4kW/5kW/6kW Smart Grid-connected Inverter (Dual MPPT): Designed for home and small commercial photovoltaic systems, it is equipped with dual-channel MPPT tracking technology ...



## Contact Us

---

For catalog requests, pricing, or partnerships, please visit:  
<https://www.llsolarenergy.co.za>



## Scan QR Code for More Information



<https://www.lsolarenergy.co.za>