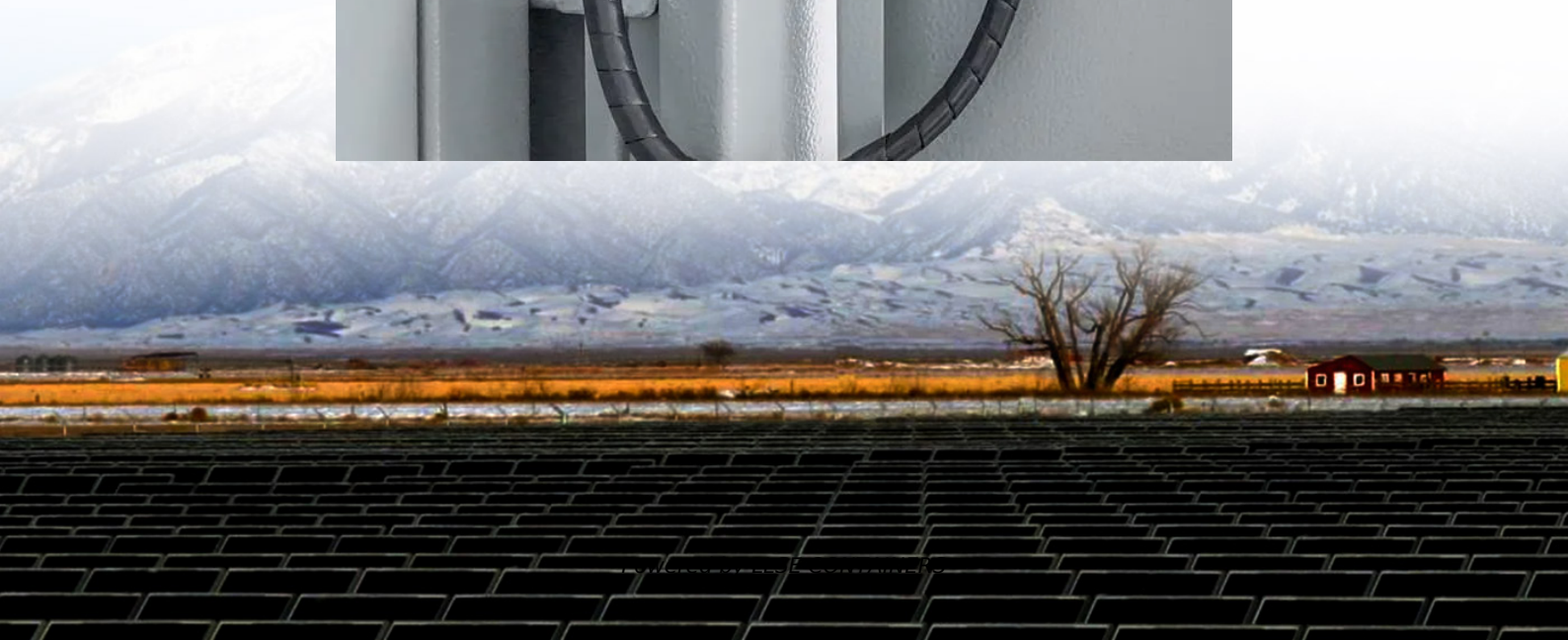


# **Hargeisa LTE emergency communication green base station**





## Overview

---

Can a 5G base station promote green development of mobile communication facilities?

However, a significant reduction of ca. 42.8% can be achieved by optimizing the power structure and base station layout strategy and reducing equipment power consumption. Overall, this study provides a clear approach to assess the environmental impact of the 5G base station and will promote the green development of mobile communication facilities.

How to plan a 4G LTE network?

Therefore, the planning and optimization algorithms should be highly efficient, advanced, and robust. An important component of 4G LTE network planning is the proper placement of evolved node base stations (eNodeBs) and the configuration of their antenna elements.

Can a wireless communication system become EE?

The extent to which a wireless communication system may become EE is heavily influenced by the parameter values that can be chosen in an application and the energy consumption modelling. Signal conditioning algorithms such as crest factor reduction and Digital Pre-Distortion are the two examples of improving PA .

Why are green wireless communications important?

Green wireless communications have been an important area of study targeting the trade-off between increased mobile communications and energy consumption . The use of such technology is motivated by the prospect of higher data rates and improved performance over the existing networks [2, 3].



## Hargeisa LTE emergency communication green base station

---



### [Next-Generation Base Stations: Deployment, Disaster](#)

Apr 30, 2025 · Next-Generation Base Stations: Deployment, Disaster Scenarios, Energy Management, Psychological Effects, and Urban Integration Capillaries of Mobile ...

### [Communication Base Station Green Energy , Huijue Group E ...](#)

As global telecom networks expand exponentially, how can communication base station green energy solutions address the sector's mounting carbon footprint? With over 7 million cellular ...



### [Hargeisa s latest communication base station wind and solar](#)

A wind-solar hybrid and communication base station technology, which is applied in photovoltaic power plants, wireless communications, photovoltaic power generation, etc., can solve the



### [Energy-efficiency schemes for base stations in 5G ...](#)

In today's 5G era, the energy efficiency (EE) of cellular base stations is crucial for sustainable communication. Recognizing this, Mobile Network Operators are actively prioritizing EE for

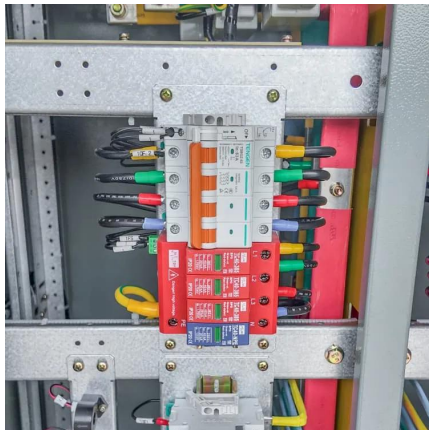


...



### Carbon emissions and mitigation potentials of 5G base station ...

Jul 1, 2022 · However, a significant reduction of ca. 42.8% can be achieved by optimizing the power structure and base station layout strategy and reducing equipment power consumption. ...



### (PDF) Accurate Base Station Placement in 4G LTE Networks ...

Feb 11, 2023 · An important component of 4G LTE network planning is the proper placement of evolved node base stations (eNodeBs) and the configuration of their antenna elements.



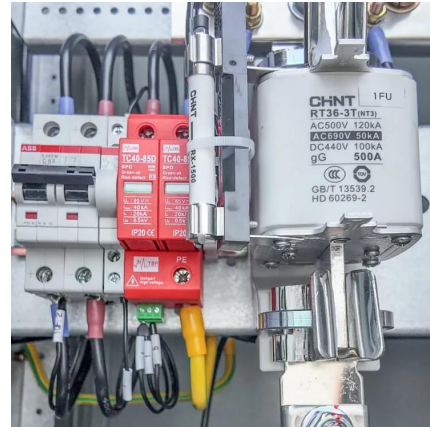
### An Independent UAV-Based Mobile Base Station

Feb 22, 2025 · The proposed system includes PS-LTE functionalities, mission-critical push-to-talk, proximity-based services, and isolated E-UTRAN operation to ensure the reliable and secure ...



## Communication Base Station Emergency Power , Huijue ...

Cellular networks collapse precisely when survivors need them most. Communication base station emergency power systems become the last line of defense--but are they truly battle-ready? ...



## Contact Us

---

For catalog requests, pricing, or partnerships, please visit:  
<https://www.llsolarenergy.co.za>

## Scan QR Code for More Information



<https://www.llsolarenergy.co.za>