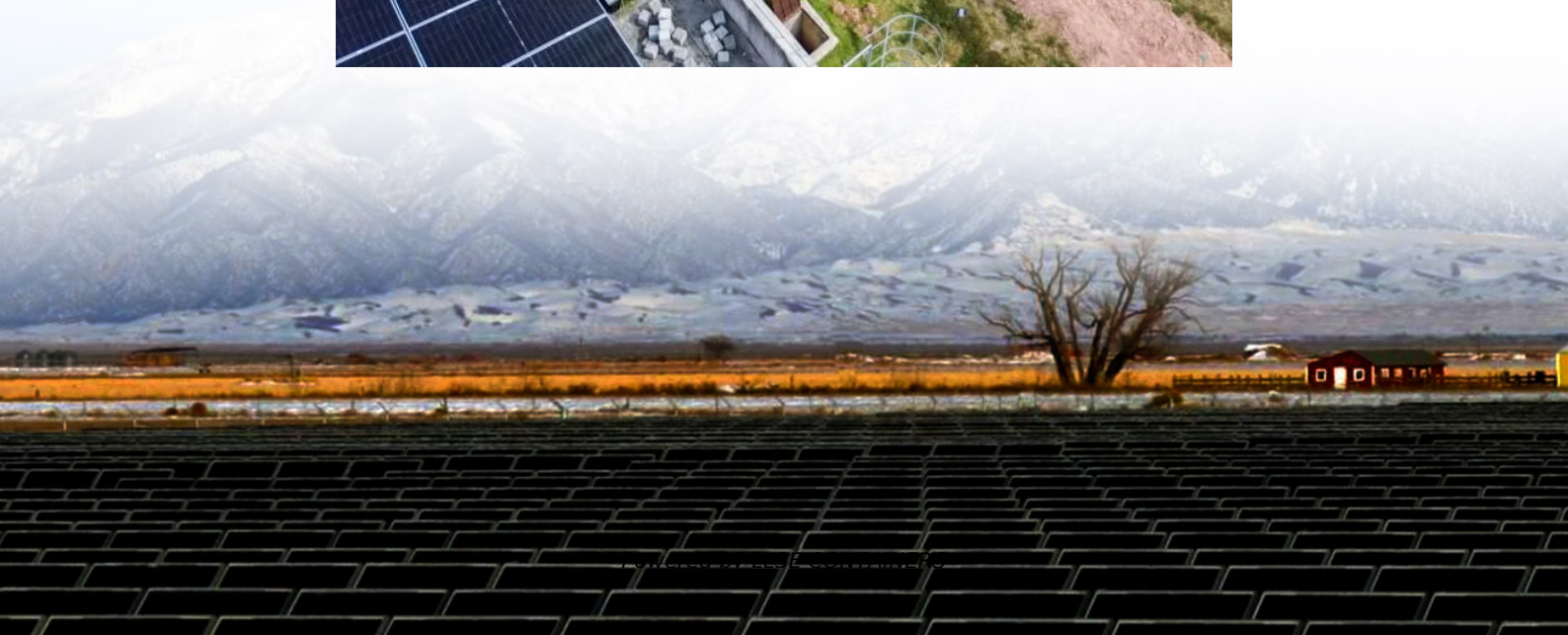


How big a battery does a 1400w inverter use





Overview

What is the recommended battery size for an inverter?

Interpreting Results: Once you input the required data, the calculator will generate the recommended battery size in ampere-hours (Ah). For instance, if your power consumption is 500 watts, the usage time is 4 hours, and the inverter efficiency is 90%, the calculator might suggest a battery size of approximately 222 Ah.

How much battery should a 500 watt inverter use?

For instance, if your power consumption is 500 watts, the usage time is 4 hours, and the inverter efficiency is 90%, the calculator might suggest a battery size of approximately 222 Ah. Practical Tips: Ensure all input values are accurate to avoid skewed results.

How much battery does a 12 volt inverter need?

As a rule of thumb, the minimum required battery capacity for a 12-volt system is around 20 % of the inverter capacity. For 24-volt inverters, it is 10 %. The battery capacity for a 12-volt Mass Sine 12/1200, for instance, is 240 Ah, while a 24-volt Mass Sine 24/1500 inverter would require at least 150 Ah.

How many Watts Does a 1500 watt inverter use?

Remember that first, you'll need to calculate the total wattage pulled by the inverter over the course of its runtime, so we calculate that first: three hours of run time needed * 1500 watts = 4500 watts total. We then divide by the DC voltage of the inverter: 12 volts DC to finally get the result we've been looking for: 375 amps.



How big a battery does a 1400w inverter use



[How Long Will a Battery Last With an ...](#)

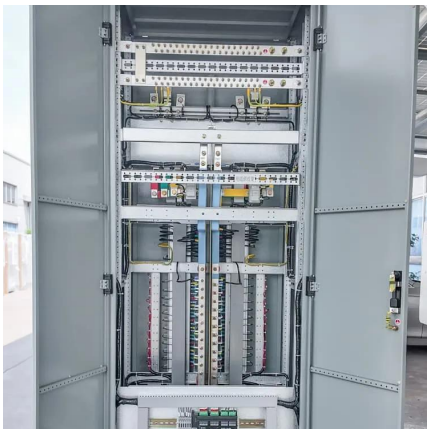
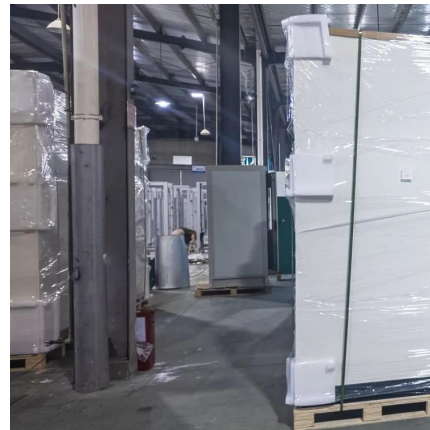
Jul 22, 2022 · One of the most common concerns that irritate solar power system owners is the battery running duration. This is very important

...

[How to Calculate the Right Battery Size for ...](#)

Calculating the correct battery size ensures that your inverter system can meet your power needs without leaving you in the dark during outages.

...



[How to Calculate the Right Battery Size for Your Inverter ...](#)

Calculating the correct battery size ensures that your inverter system can meet your power needs without leaving you in the dark during outages. An undersized battery may not provide enough

...

[How to Calculate Battery Size for Inverters of Any Size](#)

Learn how to calculate how much battery power you need to get your inverter up and running with The Inverter Store's handy how-to guide. It works for any size.



[How Do I Match My Battery Size to My Inverter?](#)

How do I know what size battery I need for my inverter? A1: Calculate the total wattage of devices you'll run, then use a guideline of at least 100Ah per 1000 watts of inverter capacity.



[Calculate Battery Size For Any Size Inverter ...](#)

Mar 3, 2023 · So I have made it easy for you, use the calculator below to calculate the battery size for 200 watt, 300 watt, 500 watt, 1000 watt, ...



[How many batteries do I need for a 1500 watt ...](#)

Oct 28, 2024 · One of the most common questions when using a 1500 watt inverter is "How many batteries do I need to support its operation?" This ...





[Battery to Inverter Calculator](#)

Jan 14, 2024 · Calculate the optimal battery size for your inverter with our battery to inverter calculator; find out the required battery capacity for your inverter with our battery power ...



[What Size Battery does a 700W Inverter Use?](#)

Jan 26, 2024 · Which battery should you use? When it comes to inverters, the most common battery types are lead-acid batteries (commonly known ...

[The Complete Off Grid Solar System Sizing ...](#)

Jul 2, 2025 · Below is a combination of multiple calculators that consider these variables and allow you to size the essential components for your ...



[How Much Battery Capacity Do You Need With a 12V Inverter?](#)

Jun 14, 2025 · Discover how to calculate the ideal battery capacity for a 12V inverter using simple math, practical examples, and money-saving tips for daily power.



[Calculate Battery Size for Inverter Calculator](#)

Mar 14, 2025 · The Calculate Battery Size for Inverter Calculator helps you determine the optimal battery capacity needed to support your inverter ...



[How many batteries do I need for a 1500 watt power inverter?](#)

Oct 28, 2024 · One of the most common questions when using a 1500 watt inverter is "How many batteries do I need to support its operation?" This question involves multiple factors, such as ...

[How big an inverter should I use for a 1400w solar panel](#)

How to choose the right solar inverter based on load requirements? ing the right solar inverter based on load requirements. When choosing an inverter,ensure it matches your sola panel ...



[Calculate Battery Size for Inverter Calculator](#)

Mar 14, 2025 · The Calculate Battery Size for Inverter Calculator helps you determine the optimal battery capacity needed to support your inverter system. By inputting critical parameters such ...



[What size battery do I need to run a 1500W inverter?](#)

To run a 1500W inverter, the required battery size in Amp-hours (Ah) depends on your battery voltage, desired runtime, average load, and the battery's depth of discharge; typically, for a ...



[Frequently Asked Questions about Inverters](#)

Frequently Asked Questions about Inverters How much battery capacity do I need with an inverter? As a rule of thumb, the minimum required battery capacity for a 12-volt system is ...

[Calculate Battery Size For Any Size Inverter \(Using Our ...](#)

Mar 3, 2023 · Pairing a right size capacity battery for an inverter can be a bit confusing for most the beginners So I have made it easy for you, use the calculator below to calculate the battery ...



[The Only Inverter Size Chart You'll Ever Need](#)

Sep 25, 2023 · We have created a comprehensive inverter size chart to help you select the correct inverter to power your appliances.



Contact Us

For catalog requests, pricing, or partnerships, please visit:
<https://www.llsolarenergy.co.za>

Scan QR Code for More Information



<https://www.llsolarenergy.co.za>