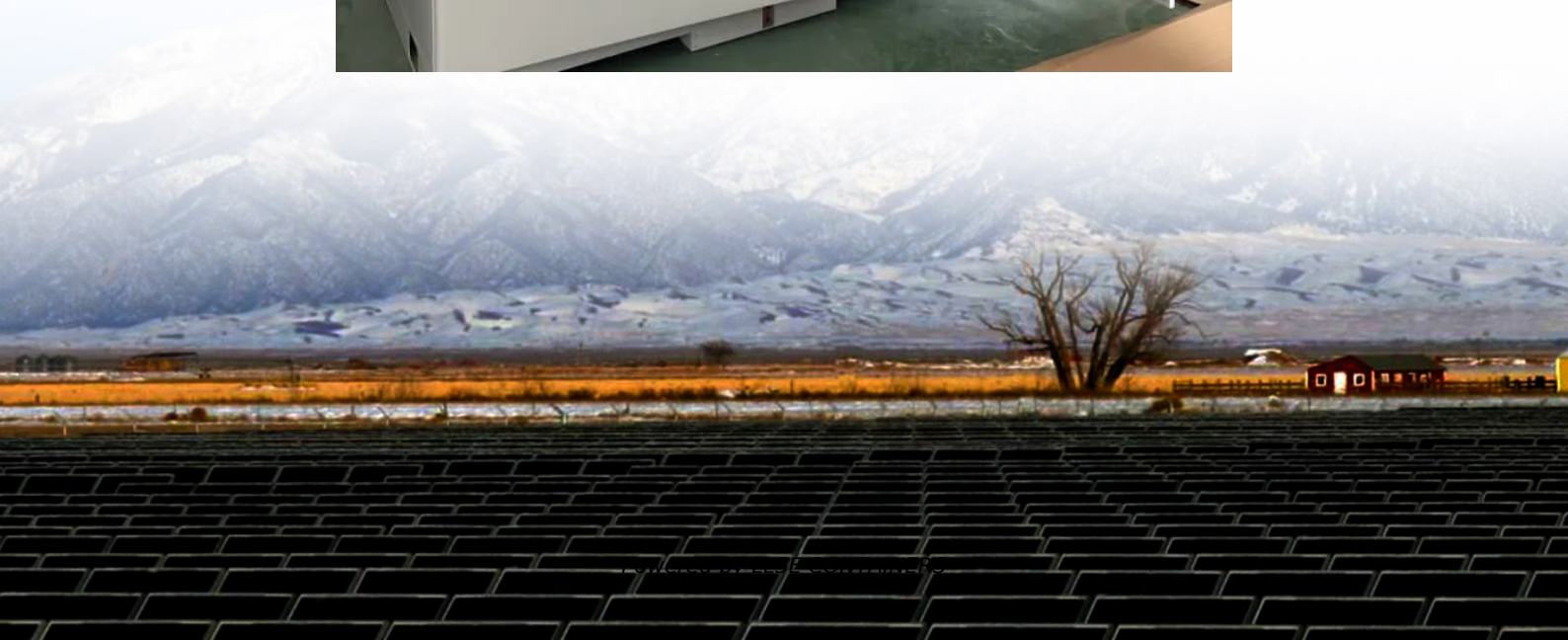


How big an inverter should I use for 48v58a





Overview

Do I need an inverter size chart?

The need for an inverter size chart first became apparent when researching our DIY solar generator build. Solar generators range in size from small generators for short camping trips to large off-grid power systems for a boat or house. Consequently, inverter sizes vary greatly.

What are the different solar inverter sizes?

Solar generators range in size from small generators for short camping trips to large off-grid power systems for a boat or house. Consequently, inverter sizes vary greatly. During our research, we discovered that most inverters range in size from 300 watts up to over 3000 watts. In this article, we guide you through the different inverter sizes.

How does the inverter size calculator work?

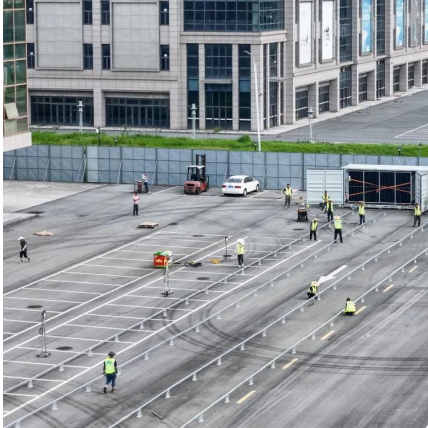
Our Inverter Size Calculator simplifies this task by accurately estimating the recommended inverter capacity based on your solar panel power and quantity. By inputting your panel's rated power and number of panels, the calculator produces a recommended inverter power range that aligns with 80-100% of your system's total DC capacity.

How many Watts Does a solar inverter use?

Depending on where they fall in that band and the size of their solar array, they will likely use a 3, 5, or 10kW inverter. You also need to consider surge watts and voltage drop. Surge watts are the extra power required to start appliances that have motors, such as refrigerators and air conditioners.



How big an inverter should I use for 48v58a



[How Do You Calculate the Appropriate Inverter Size for a ...](#)

Oct 28, 2024 · To calculate the appropriate inverter size for a 48V battery system, you need to determine the total wattage of the devices you plan to power. The formula is: Inverter Size ...

[The Only Inverter Size Chart You'll Ever Need](#)

Sep 25, 2023 · We created a comprehensive inverter size chart to help you select the correct inverter to power your appliances. The need for an inverter size chart first became apparent ...



[How to Choose the Right Size Solar Inverter: Step-by-Step ...](#)

Jul 15, 2025 · Wondering what size solar inverter do I need for your solar system? This guide walks you through calculating inverter size based on panel capacity, power usage, and safety ...



[Inverter Size Calculator - self2solar](#)

Feb 20, 2025 · Determining the Inverter Size to Match the Solar Panel Array Determining the correct inverter size depends on your solar array's ...



[The Only Inverter Size Chart You'll Ever Need](#)

How to Determine What Size Inverter I Need? What Are The Two Types of Power loads? Inverter Size Chart What Will A 300W Inverter Run? What Will A 500W Inverter Run? What Will A 700W Inverter Run? What Will A 1000W Inverter Run? What Will A 1500W Inverter Run? What Will A 2000W Inverter Run? What Will A 3000W Inverter Run? Before we go any further, we highly recommend that you choose a pure sine wave inverter. This type of inverter delivers high-quality electricity, similar to your utility company. This way, none of your appliances run the risk of being damaged. Now, when it comes to sizing your inverter, you always need to check your appliances' wattage and ensure t See more on [climatebiz coolienenergy](#)

How to Size an Inverter for a 48V 300Ah (14.4kWh) System -

...

Sizing an inverter for a 48V 300Ah system, which equates to a total capacity of 14.4kWh, involves understanding both the power requirements of your appliances and the efficiency of the ...

[Solar inverter size: Calculate the right size for your inverter](#)

4 days ago · Discover why solar inverter sizing is important for efficiency and performance. Learn how to calculate the ideal inverter size for your



solar panels, battery, and household energy ...



[Inverter Size Calculator - self2solar](#)

Feb 20, 2025 · Determining the Inverter Size to Match the Solar Panel Array Determining the correct inverter size depends on your solar array's capacity and your household's power ...



[How to Size an Inverter for a 48V 300Ah \(14.4kWh\) System - ...](#)

Sizing an inverter for a 48V 300Ah system, which equates to a total capacity of 14.4kWh, involves understanding both the power requirements of your appliances and the efficiency of the ...



[How to Choose the Right Size Solar Inverter: ...](#)

Jul 15, 2025 · Wondering what size solar inverter do I need for your solar system? This guide walks you through calculating inverter size based on ...





[How to Choose the Best Inverter 48V for Your Solar or Off ...](#)

Dec 3, 2025 · Learn what to look for when buying a 48V inverter--power output, efficiency, safety features, and more. Make an informed decision with this complete buyer's guide.

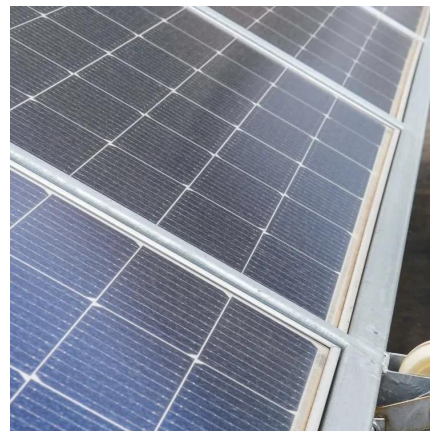


[Solar inverter size: Calculate the right size for ...](#)

4 days ago · Discover why solar inverter sizing is important for efficiency and performance. Learn how to calculate the ideal inverter size for your solar ...

[What Inverter Do I Need for a 48V Battery?](#)

4 days ago · What Output Size Should You Choose? The output capacity (in kW) must match your total energy consumption. Most 48V systems use 3kW-10kW inverters. If your peak ...



[Is your inverter too big? Understanding the ...](#)

2 days ago · What "oversized inverter" actually means When people talk about an inverter being "too big," they usually think only about the power ...



[Is your inverter too big? Understanding the downsides of ...](#)

2 days ago · What "oversized inverter" actually means When people talk about an inverter being "too big," they usually think only about the power rating printed on the label: 5 kW, 8 kW, 10 ...



[What Inverter Do I Need for a 48V Battery?](#)

4 days ago · What Output Size Should You Choose? The output capacity (in kW) must match your total energy consumption. Most 48V systems use ...

Contact Us

For catalog requests, pricing, or partnerships, please visit:
<https://www.llsolarenergy.co.za>

Scan QR Code for More Information



<https://www.llsoleenergy.co.za>