

How big an inverter should I use for a 105kw solar module





Overview

What size solar inverter do I Need?

Your inverter size should match your solar array's capacity, not your electricity bill. This means your inverter doesn't need to power your entire home—it just converts whatever your panels generate. Let's say you have a 6kW solar array (twenty 300-watt panels).

How do I choose a solar inverter?

Knowing your array size allows you to choose an inverter that can handle that production efficiently—without over- or under-investing in capacity. The second step is understanding your system's DC-to-AC ratio, one of the most important metrics when sizing a solar inverter.

Do I need a 5 kW inverter?

Most UK homes need at least a 5 kW inverter. While 3.68 kW is common, larger homes or those with batteries benefit from a 5 kW+ system. What is a solar inverter?

A solar inverter converts electricity between “direct current” (DC) and “alternating current” (AC). Electricity produced by solar panels and electricity stored in batteries is DC.

How many inverters do you need for a 12 kW solar system?

Inverter: one or two inverters of a combined 10 kW–15 kW A 12 kW solar installation in a farm near Berlin utilized a 10 kW inverter with excellent results—saving a couple of hundred dollars on initial cost and still registering peak output. 3. Equate Load Requirements, Not Panel Watts It's not solely about sunlight—actual usage matters, too.



How big an inverter should I use for a 105kw solar module

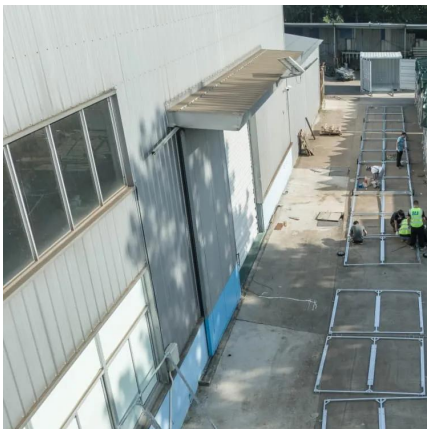


[Solar inverter size: Calculate the right size for ...](#)

5 days ago · Discover why solar inverter sizing is important for efficiency and performance. Learn how to calculate the ideal inverter size for your solar ...

[How to Determine the Right Solar Inverter Size for Your System](#)

Aug 12, 2025 · Learn how to choose the right solar inverter size for maximum efficiency, energy savings, and system performance. Avoid common pitfalls and boost ROI.



[Can an Inverter Be Too Big for Your Battery System?](#)

How to Calculate the Right Inverter Size for Your Battery Match the inverter's continuous wattage rating to the battery's discharge capacity. For a 12V 200Ah battery (2.4kWh), a 2000W inverter ...

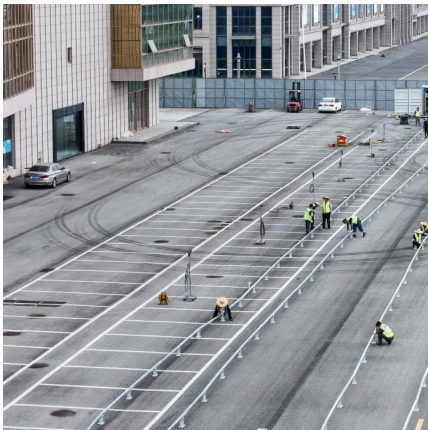
[Solar Panel Inverter Size Calculator](#)

Jul 14, 2024 · The voltage and current of the solar panels Plans for expanding the solar panel system later Getting the 12v inverter size calculator, solar inverter calculation formula, and ...



[Solar Inverter Sizing Guide: How to Size Your Inverter](#)

Sep 29, 2025 · Learn how to properly size your solar inverter with our complete guide. Discover the optimal DC-to-AC ratio and avoid costly sizing mistakes.



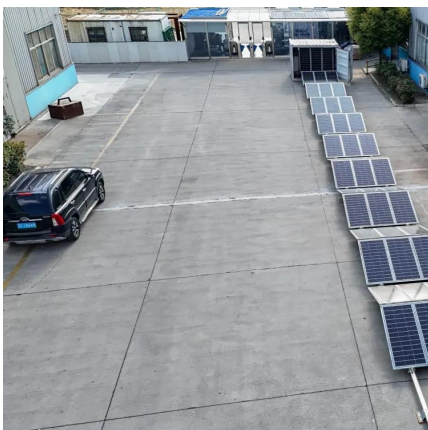
[Inverter Size Calculator - self2solar](#)

Feb 20, 2025 · Determining the Inverter Size to Match the Solar Panel Array Determining the correct inverter size depends on your solar array's capacity and your household's power ...



[Solar Inverter Sizing Guide for Maximum Efficiency , Mingch](#)

Jun 27, 2025 · When choosing a solar inverter, size matters more than you might think. The right solar inverter sizing helps ensure your system performs efficiently, qualifies for incentives, and ...





[Solar inverter size: Calculate the right size for your inverter](#)

5 days ago · Discover why solar inverter sizing is important for efficiency and performance. Learn how to calculate the ideal inverter size for your solar panels, battery, and household energy ...



[What Size Solar Inverter Do I Need? Experts Break It Down](#)

Jul 18, 2025 · Thinking about going solar? Great move. But before you start soaking up the sun, you'll need the right inverter to match your system. This guide breaks down what size solar ...

[How to Choose the Right Size Solar Inverter: Step-by-Step ...](#)

Jul 15, 2025 · Wondering what size solar inverter do I need for your solar system? This guide walks you through calculating inverter size based on panel capacity, power usage, and safety ...



[How Big of an Inverter Do I Need to Run a Whole House?](#)

Aug 6, 2024 · Industry best practices often recommend selecting an inverter with a capacity around 20-30% higher than your maximum load to accommodate future expansions and ...



Contact Us

For catalog requests, pricing, or partnerships, please visit:
<https://www.llsolarenergy.co.za>

Scan QR Code for More Information



<https://www.llsolarenergy.co.za>