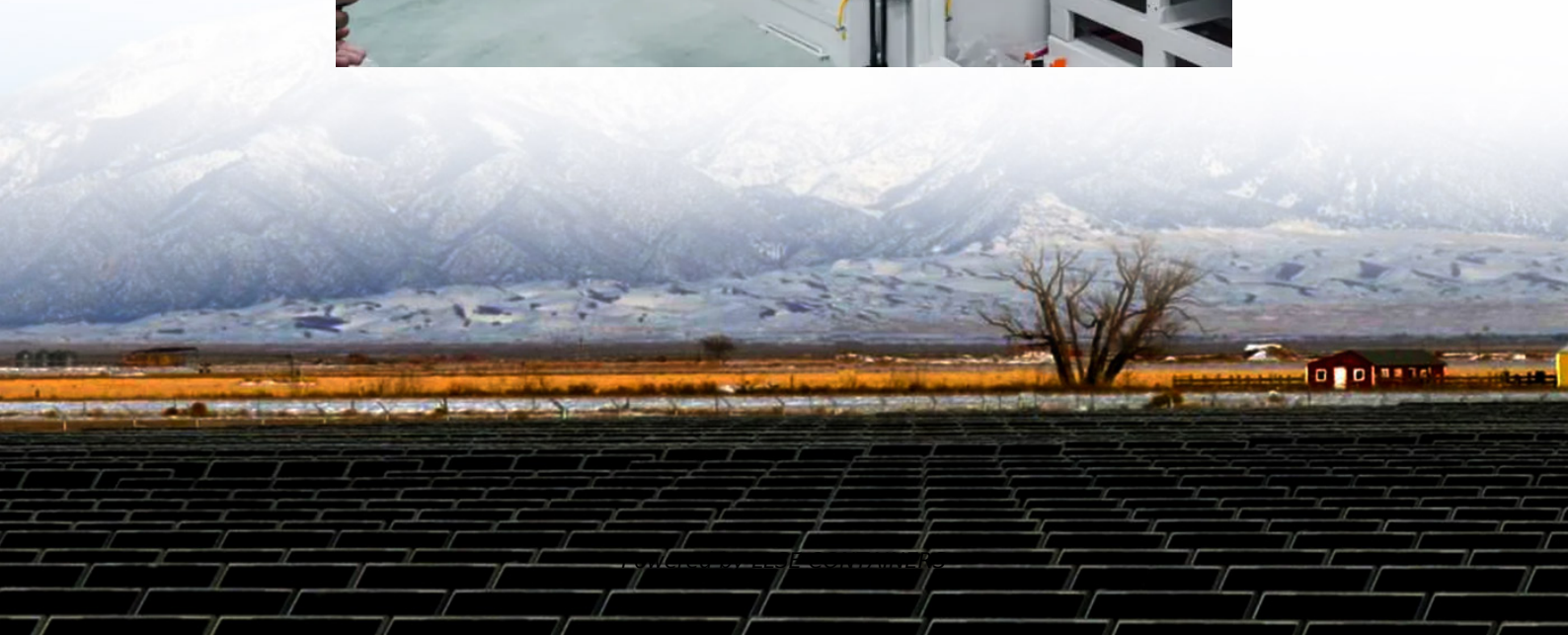


# **How big an inverter should I use for a 12V 54AH**





## Overview

---

What size inverter for a 12V 200Ah battery?

For a 12V 200Ah battery (2.4kWh), a 2000W inverter is ideal. Formula: Inverter Wattage  $\leq$  (Battery Voltage  $\times$  Ah Rating  $\times$  0.8). Factor in surge power needs but prioritize sustained loads. Always check the battery's max discharge rate (C-rate) to avoid exceeding safe limits. When sizing for 24V or 48V systems, recalculate using the higher voltage.

What voltage should a 12V inverter run on?

The input voltage of the inverter should match the battery voltage. (For example 12v battery for 12v inverter, 24v battery for 24v inverter and 48v battery for 48v inverter Summary What Will An Inverter Run & For How Long?

.

What is the recommended battery size for an inverter?

Interpreting Results: Once you input the required data, the calculator will generate the recommended battery size in ampere-hours (Ah). For instance, if your power consumption is 500 watts, the usage time is 4 hours, and the inverter efficiency is 90%, the calculator might suggest a battery size of approximately 222 Ah.

What wattage Inverter should I use?

Match the inverter's continuous wattage rating to the battery's discharge capacity. For a 12V 200Ah battery (2.4kWh), a 2000W inverter is ideal. Formula: Inverter Wattage  $\leq$  (Battery Voltage  $\times$  Ah Rating  $\times$  0.8). Factor in surge power needs but prioritize sustained loads.



## How big an inverter should I use for a 12V 54AH

---



### [How Much Battery Capacity Do You Need With a 12V Inverter?](#)

Jun 14, 2025 · Discover how to calculate the ideal battery capacity for a 12V inverter using simple math, practical examples, and money-saving tips for daily power.

### [Determining the Solar and Inverter Size ...](#)

Jul 29, 2025 · These systems use the grid as backup, so your solar and inverter Size doesn't need to cover 100% of daily demand--but should ...



### [Inverter Size Calculator , Find Your Perfect Power Match](#)

Apr 25, 2025 · How the Calculator Works Pick your appliances. Use the dropdown to add common devices--or enter your own custom items. Minimum Inverter Size: The smallest ...

### [Determining the Solar and Inverter Size Needed to Charge a ...](#)

Jul 29, 2025 · These systems use the grid as backup, so your solar and inverter Size doesn't need to cover 100% of daily demand--but should still handle peak production efficiently. Off ...



### [Calculate Battery Size For Any Size Inverter \(Using Our ...](#)

Mar 3, 2023 · Battery size chart for inverter Note! The input voltage of the inverter should match the battery voltage. (For example 12v battery for 12v inverter, 24v battery for 24v inverter and ...



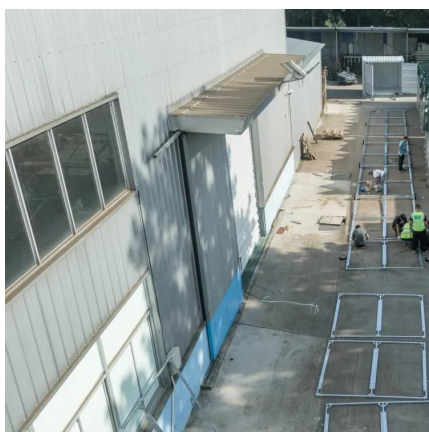
### [Calculate Battery Size for Inverter Calculator](#)

Mar 14, 2025 · The Calculate Battery Size for Inverter Calculator helps you determine the optimal battery capacity needed to support your inverter ...



### [The Only Inverter Size Chart You'll Ever Need](#)

Sep 25, 2023 · We created a comprehensive inverter size chart to help you select the correct inverter to power your appliances. The need for an inverter size chart first became apparent ...







### [How Big of an Inverter Can My Car Battery ...](#)

Mar 26, 2025 · Most cars use 12V batteries, some larger vehicles may use 24V batteries. This (kind of) voltage specification helps define the input ...



### [What size inverter can you run off a car battery?](#)

Aug 11, 2025 · A typical 12-volt car battery can safely support an inverter ranging from about 150 watts up to 600 watts for regular use without harming the battery. While it is technically ...

### [Calculate Battery Size for Inverter Calculator](#)

Mar 14, 2025 · The Calculate Battery Size for Inverter Calculator helps you determine the optimal battery capacity needed to support your inverter system. By inputting critical parameters such ...



### [Calculate Battery Size For Any Size Inverter \(Using Our...](#)

Inverter Battery Size Calculator  
How to Calculate Battery Capacity For Inverter  
How Many Batteries For 3000-Watt Inverter  
Battery Size Chart For Inverter  
Battery to Inverter Wire Size Chart  
To calculate the battery capacity for your inverter use this formula  
$$\text{Inverter capacity (W)} \times \text{Runtime (hrs)} / \text{solar system voltage} = \text{Battery Size} \times 1.15$$
  
Multiply the result by 2 for lead-acid type battery, for lithium battery type it would stay the same  
Example Let's suppose you have a



3000-watt inverter with an 85% efficiency rate and your daily runtime See more on dotwatts redwaybattery

## What size inverter can you run off a car battery?

Aug 11, 2025 · A typical 12-volt car battery can safely support an inverter ranging from about 150 watts up to 600 watts for regular use without harming the battery. While it is technically ...

### [How Big of an Inverter Can My Car Battery Handle?](#)

Mar 26, 2025 · Most cars use 12V batteries, some larger vehicles may use 24V batteries. This (kind of) voltage specification helps define the input requirements of the inverter. Battery ...

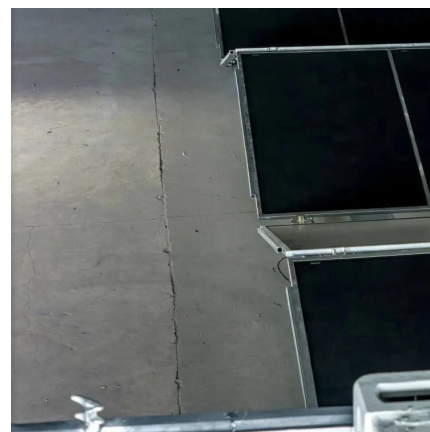


### [Can an Inverter Be Too Big for Your Battery System?](#)

FAQ Can I use a 3000W inverter with a 200Ah battery? Only if it's a 24V lithium system. For 12V lead-acid,  $200\text{Ah} \times 12\text{V} \times 0.5\text{C} = 1200\text{W}$  max. How long will a 100Ah battery last with a 1000W ...

### [How Do I Match My Battery Size to My Inverter?](#)

A general rule is that for every 1000 watts of inverter capacity, you should have at least 100Ah of battery capacity. For instance, if you have a 2000W inverter, you should ideally have at least ...





## Contact Us

---

For catalog requests, pricing, or partnerships, please visit:  
<https://www.llsolarenergy.co.za>

### Scan QR Code for More Information



<https://www.llsolarenergy.co.za>