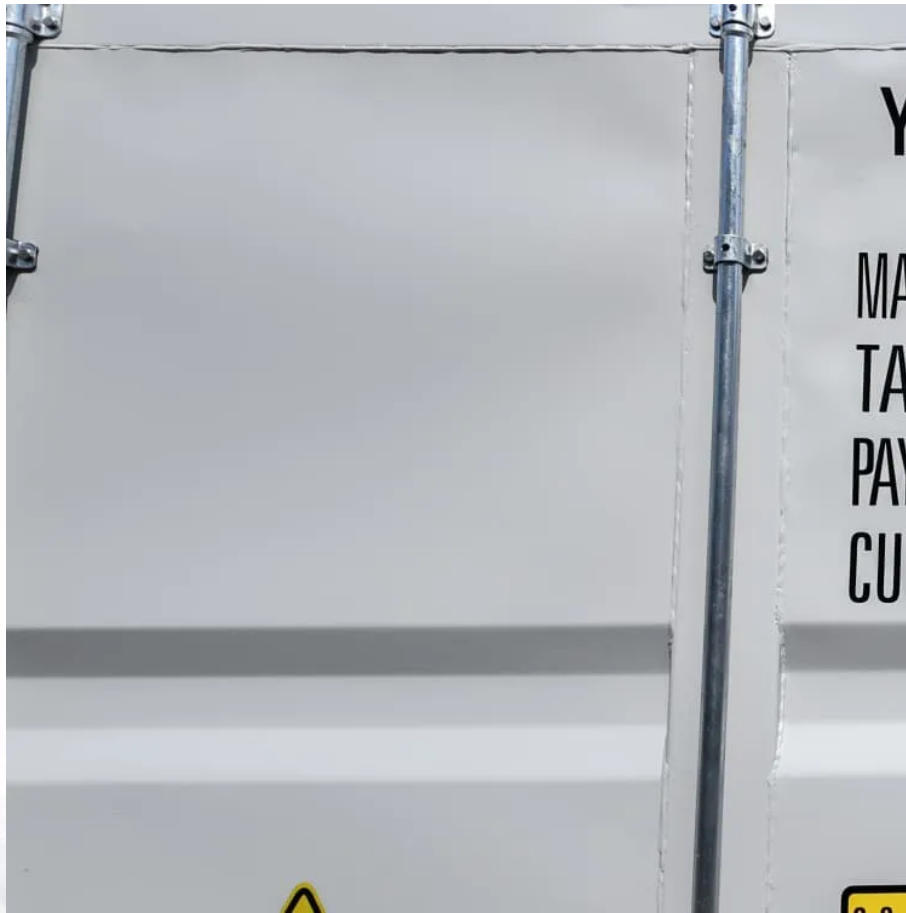


How big an inverter should a 220v lead-acid battery be matched with





Overview

What voltage should a 12V inverter run on?

The input voltage of the inverter should match the battery voltage. (For example 12v battery for 12v inverter, 24v battery for 24v inverter and 48v battery for 48v inverter Summary What Will An Inverter Run & For How Long?

.

What is the recommended battery size for an inverter?

Interpreting Results: Once you input the required data, the calculator will generate the recommended battery size in ampere-hours (Ah). For instance, if your power consumption is 500 watts, the usage time is 4 hours, and the inverter efficiency is 90%, the calculator might suggest a battery size of approximately 222 Ah.

Why should you use the calculate battery size for inverter calculator?

Using the Calculate Battery Size for Inverter Calculator can significantly streamline your power management process. This tool is particularly beneficial in scenarios where precise power estimation is critical, such as designing renewable energy systems, ensuring backup power in off-grid locations, or optimizing battery usage for cost efficiency.

Can a lithium ion battery power a 1200W inverter?

Lithium-ion batteries tolerate higher discharge rates (up to 1C) compared to lead-acid (0.5C). A 100Ah LiFePO4 battery can safely power a 1200W inverter, while lead-acid should cap at 600W. Gel and AGM batteries have intermediate tolerances. Mismatching chemistry and inverter size accelerates degradation and voids warranties.



How big an inverter should a 220v lead-acid battery be matched with



[Why Can an Inverter Be Too Big for a Battery?](#)

When considering whether an inverter can be too big for a battery, it's essential to understand the implications of mismatched capacities. An oversized inverter may lead to inefficiencies, ...

[How Much Battery Capacity Is Good for Home Inverter](#)

Aug 6, 2025 · Also verify your inverter's low-voltage cutoff isn't set too high (should be 10.5-11V for lead-acid). How does solar charging affect battery capacity requirements?



[Can a Battery Be Too Big for an Inverter?](#)

Dec 12, 2023 · Yes, a battery can be too big for an inverter, leading to inefficiencies and potential safety issues. Oversized batteries may not discharge correctly or could exceed the inverter's ...

[Calculate Battery Size for Inverter Calculator](#)

Mar 14, 2025 · The Calculate Battery Size for Inverter Calculator helps you determine the optimal battery capacity needed to support your inverter system. By inputting critical parameters



such ...

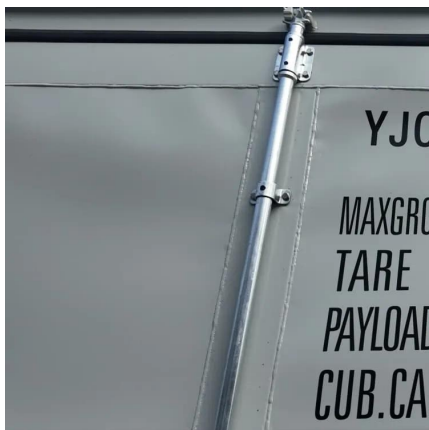
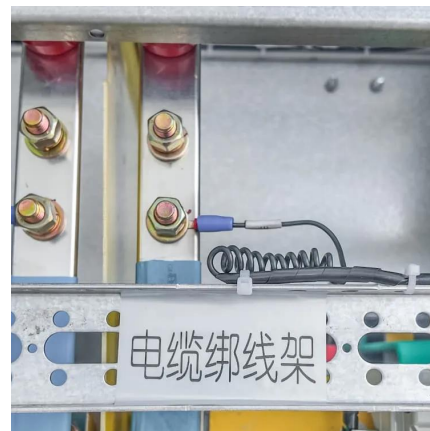


[Can an Inverter Be Too Big for Your Battery System?](#)

Lithium-ion batteries tolerate higher discharge rates (up to 1C) compared to lead-acid (0.5C). A 100Ah LiFePO4 battery can safely power a 1200W inverter, while lead-acid should cap at 600W.

[How to Calculate the Right Battery Size for Your Inverter ...](#)

Calculating the correct battery size ensures that your inverter system can meet your power needs without leaving you in the dark during outages. An undersized battery may not provide enough ...



[Calculate Battery Size For Any Size Inverter \(Using Our ...](#)

Inverter Battery Size Calculator
How to Calculate Battery Capacity For Inverter
How Many Batteries For 3000-Watt Inverter
Battery Size Chart For Inverter
Battery to Inverter Wire Size Chart
To calculate the battery capacity for your inverter use this formula
$$\text{Inverter capacity (W)} \times \text{Runtime (hrs)} / \text{solar system voltage} = \text{Battery Size} \times 1.15$$

Multiply the result by 2 for lead-acid type battery, for lithium battery type it would stay the same
Example Let's suppose you have a



3000-watt inverter with an 85% efficiency rate and your daily runtime See more on [dotwatts calculatorcorp](#)

Calculate Battery Size for Inverter Calculator

Mar 14, 2025 · The Calculate Battery Size for Inverter Calculator helps you determine the optimal battery capacity needed to support your inverter ...

[Calculate Battery Size For Any Size Inverter \(Using Our ...](#)

Mar 3, 2023 · Battery size chart for inverter Note! The input voltage of the inverter should match the battery voltage. (For example 12v battery for 12v inverter, 24v battery for 24v inverter and ...



Contact Us

For catalog requests, pricing, or partnerships, please visit:
<https://www.lsolarenergy.co.za>

Scan QR Code for More Information



<https://www.llsolarenergy.co.za>