

How big can a 48v inverter be





Overview

Does a 48v battery work with a 5000W inverter?

A 48V 100Ah lithium battery (4.8kWh) paired with a 5000W inverter works because $48V \times 100Ah \times 1C = 4800W$. Always account for inverter efficiency losses (typically 85-95%). For mixed AC/DC loads, sum the wattage of all devices that might run simultaneously and add a 20% buffer.

What voltage should a 12V inverter run on?

The input voltage of the inverter should match the battery voltage. (For example 12v battery for 12v inverter, 24v battery for 24v inverter and 48v battery for 48v inverter Summary What Will An Inverter Run & For How Long?

.

What size inverter do I Need?

Inverters are rated by their continuous power output in watts (W). The right inverter size depends on how much power your appliances draw. Here are some general guidelines: A 12V 100Ah battery can reasonably power an inverter up to 1000W-1200W for short periods. For continuous loads, 500W-800W is more efficient and battery-friendly.

Can a 100Ah battery be a 24V inverter?

Most 100Ah batteries are 12V, but some systems may use 24V. Your inverter must match your battery voltage (e.g., 12V inverter for a 12V battery). 2. Power Rating of the Inverter (Wattage) Inverters are rated by their continuous power output in watts (W). The right inverter size depends on how much power your appliances draw.



How big can a 48v inverter be



[How Do You Calculate the Appropriate Inverter Size for a 48V ...](#)

Oct 28, 2024 · To calculate the appropriate inverter size for a 48V battery system, you need to determine the total wattage of the devices you plan to power. The formula is: Inverter Size ...

[The Only Inverter Size Chart You'll Ever Need](#)

How to Determine What Size Inverter I Need?What Are The Two Types of Power loads?Inverter Size ChartWhat Will A 300W Inverter Run?What Will A 500W Inverter Run?What Will A 700W Inverter Run?What Will A 1000W Inverter Run?What Will A 1500W Inverter Run?What Will A 2000W Inverter Run?What Will A 3000W Inverter Run?Before we go any further, we highly recommend that you choose a pure sine wave inverter. This type of inverter delivers high-quality electricity, similar to your utility company. This way, none of your appliances run the risk of being damaged. Now, when it comes to sizing your inverter, you always need to check your appliances' wattage and ensure t See more on climatebiz Afore New Energy Technology



48V Inverter: The Ultimate Guide to Efficient and Scalable

...

May 19, 2025 · Unlock efficient power solutions with a 48V inverter--perfect for solar, off-grid, and backup systems. Learn how to choose the best one for your needs now!



[Can an Inverter Be Too Big for Your Battery System?](#)

A 48V 100Ah lithium battery (4.8kWh) paired with a 5000W inverter works because $48V \times 100Ah \times 1C = 4800W$. Always account for inverter efficiency losses (typically 85-95%).

[What size inverter can a 48V 100Ah LiFePO4 battery support?](#)

1 day ago · A 48V 100Ah LiFePO4 battery could support inverters in the range of 3000W to 5000W, depending on the specific battery's discharge capabilities and the types of loads you

...



[48V Inverter: The Ultimate Guide to Efficient and Scalable ...](#)

May 19, 2025 · Unlock efficient power solutions with a 48V inverter--perfect for solar, off-grid, and backup systems. Learn how to choose the best one for your needs now!

[What Inverter Size is Best for a 100Ah Battery?](#)

Conclusion Best Inverter Size for a 100Ah Battery: 300W-500W: Best for efficiency and longer runtimes. 1000W: Suitable for moderate loads, shorter usage. Avoid 1500W+ unless battery is ...



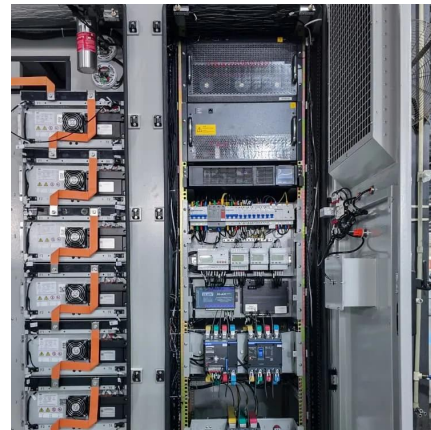


[Calculate Battery Size For Any Size Inverter \(Using Our ...](#)

Mar 3, 2023 · Battery size chart for inverter Note! The input voltage of the inverter should match the battery voltage. (For example 12v battery for 12v inverter, 24v battery for 24v inverter and ...

[Why Can an Inverter Be Too Big for a Battery?](#)

When considering whether an inverter can be too big for a battery, it's essential to understand the implications of mismatched capacities. An oversized inverter may lead to inefficiencies, ...



[Choosing and Sizing Batteries, Charge Controllers and Inverters ...](#)

This can be 12, 24 or 48 for commercial application. If we choose to use 48V, the minimum AH capacity is then $10\ 800/48 = 225$ AH. Now if you divide by your battery's rating you find the ...

[Can a Battery Be Too Big for an Inverter?](#)

Dec 12, 2023 · Yes, a battery can be too big for an inverter, leading to inefficiencies and potential safety issues. Oversized batteries may not discharge correctly or could exceed the inverter's ...





[How to Size an Inverter for a 48V 300Ah \(14.4kWh\) System - ...](#)

For a 48V 300Ah system, you can use the formula: Total Watt-Hours = Voltage x Amp-Hours. In this case, it results in $48V \times 300Ah = 14,400Wh$ or 14.4kWh. It's crucial to choose an inverter ...

Contact Us

For catalog requests, pricing, or partnerships, please visit:
<https://www.llsolarenergy.co.za>

Scan QR Code for More Information



<https://www.llsolarenergy.co.za>