

How high should the mobile power box be from the ground





Overview

How high should a meter box be?

In the UK: The maximum height is 1800mm between the box's top and the ground level. The minimum height is 450mm between the bottom of the box and the ground. They discourage consumers from installing the meter box inside, at the rear of the house, on the sides, or behind gates and fences.

How tall should a box be?

However, most of them use industry standards that specify a minimum height of four feet (between the ground and the bottom of the meter), an ideal height of five feet (between the floor and the center of the box), and a maximum height of six feet (between the ground and center).

Why is a meter box height important?

The maximum height makes the meter accessible. This is important because the utility company routinely sends technicians to take meter readings. An electric meter box that requires a ladder to access is a hazard. The minimum height protects the meter box from water. You don't want water to enter the box during a flood.

Where should a meter box be installed?

The minimum height is 450mm between the bottom of the box and the ground. They discourage consumers from installing the meter box inside, at the rear of the house, on the sides, or behind gates and fences. They've also warned against meter box installations in a garage or porch and under the window.



How high should the mobile power box be from the ground



[Electrical Panel Mounting Requirements \(Dictated by the NEC\)](#)

Jan 4, 2025 · Looking to transfer your electrical panel to a new place? Perhaps you want to put it somewhere inconspicuous - in a closet or in the bathroom. Whatever the reason is, you must ...

[What Height Should Electric Meter Box Be?](#)

1 day ago · What is the correct height for a meter box? In the UK: The maximum height is 1800mm between the box's top and the ground level. The minimum height is 450mm between ...



[Installation requirements for pole-mounted](#)

Sep 25, 2020 · The distance between the transformer station and the ground should not be less than 2.5m; the lower edge of the low-voltage distribution box should not be less than 1m from ...

Precautions for installation of explosion proof power distribution box

If the distribution box is installed on the ground, the bottom of our distribution box should be 50-100 mm higher than the ground, and the



center height of the operating handle is generally 1.2 ...

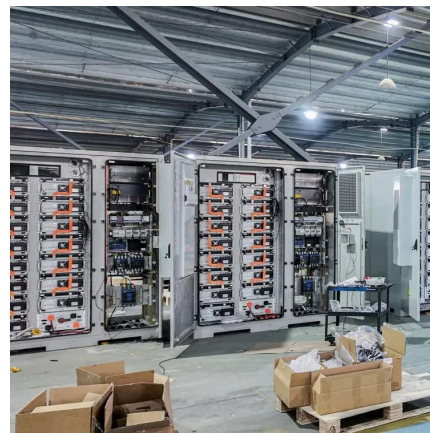


Is There A Minimum Height For Exterior Electrical Panels

Jun 1, 2024 · Electrical panels need to be installed 4 feet off the ground with the "center grip handle/toggle" of the highest circuit breaker no more than 6'7" high to be NEC-approved. NEC ...

How high is the meter box (ready board box) from the ground?

If it is an indoor meter box (ready board box), it is generally 1.5 meters away from the ground. If it is used outdoors, it is generally 1.8 meters away from the ground. The main purpose is to ...



NEC Requirements for Panelboards and Load Centers

1 day ago · 200-amp panel with 40 breaker spaces provides enough power to a house up to 3,500 sq. ft. The minimum size of main service is 100A, 120V, 3-wires (Hot as black or red, Neutral ...



What Height Should Electric Meter Box Be?

Accessibility and Safety Local Building Codes and Regulations Special Considerations Such as Ada Weather Conditions and Environmental Factors Local and national regulations rarely specify the maximum and minimum height for a meter box. They will encourage you to provide sufficient room that gives an electrician easy access to the meter. But they are unlikely to enforce a specific height. But that doesn't mean you should guess. The utility company will recommend a fitting maximum and mini See more on portable power guides Galvin Power



Electrical Panel Mounting Requirements (Dictated by the

...

Jan 4, 2025 · Looking to transfer your electrical panel to a new place? Perhaps you want to put it somewhere inconspicuous - in a closet or in the bathroom. Whatever the reason is, you must ...



What specifications should be followed for the installation ...

Oct 14, 2024 · 1, Specification for the distance between the meter box and the ground According to the regulations of the State Power Corporation, the height of residential meter boxes from ...

Requirements And Specifications For Installation Of ...

Mar 8, 2025 · The distribution box should be installed in an area close to the power supply to reduce power loss and ensure safety. Avoid installing in a humid and corrosive environment to ...





[How Far Off The Ground Does A Meter Base Need To Be?](#)

Jan 17, 2024 · How Far Off The Ground Does A Meter Base Need To Be? Introduction Meter bases are an important component of electrical systems. They connect power lines to ...

Contact Us

For catalog requests, pricing, or partnerships, please visit:
<https://www.llsolarenergy.co.za>

Scan QR Code for More Information



<https://www.llsolarenergy.co.za>