

How long can the base station backup power supply last





Overview

Why do base stations have a small backup energy storage time?

Base stations' backup energy storage time is often related to the reliability of power supply between power grids. For areas with high power supply reliability, the backup energy storage time of base stations can be set smaller.

What is the relationship between power supply reliability and backup time?

According to the inverse relationship between the power supply reliability of the distribution network and the backup time of the base station, the traditional base station energy storage model is modified to obtain a base station energy storage model that is affected by power supply reliability and base station communication volume.

Is backup energy storage time a constant?

In the research, relevant scholars often regard the backup energy storage time of the base station as a constant [22, 23], and only consider the variability of the base station power consumption. Base stations' backup energy storage time is often related to the reliability of power supply between power grids.

How to determine backup energy storage capacity of base stations?

For the determination of the backup energy storage capacity of base stations in different regions, this paper mainly considers three factors: power supply reliability of the grid node where the base station is located (grid node vulnerability), the load level of the grid node and communication load.



How long can the base station backup power supply last



[Communication Base Station Backup Battery](#)

When natural disasters cut off power grids, when extreme weather threatens power supply safety, our communication backup power system with intelligent charge/discharge management and ...

[Securing Backup Power for Telecom Base ...](#)

Mar 17, 2025 · One of the most critical components of any telecom base station is its backup power system. This article will explore in detail how ...



[Telecom Base Station Backup Power Solution: ...](#)

Jun 5, 2025 · Discover the 48V 100Ah LiFePO4 battery pack for telecom base stations: safe, long-lasting, and eco-friendly. Optimize reliability with ...



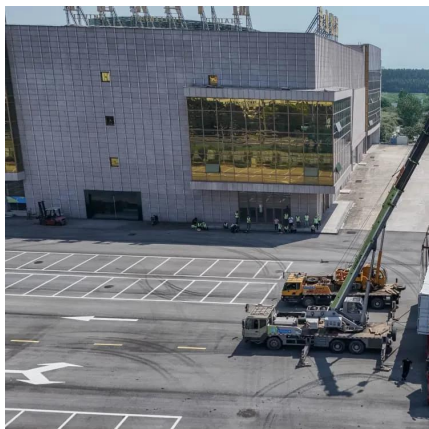
[Distribution network restoration supply method considers 5G base](#)

Feb 15, 2024 · Aiming at the shortcomings of existing studies that ignore the time-varying characteristics of base station's energy storage backup, based on the traditional base station ...



[Understanding Backup Battery Requirements for Telecom Base Stations](#)

Mar 7, 2025 · Telecom base stations require reliable backup power to ensure uninterrupted communication services. Selecting the right backup battery is crucial for network stability and ...



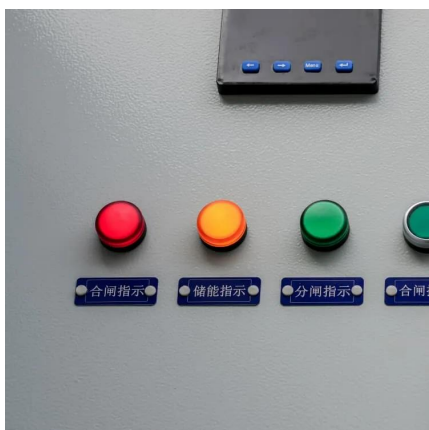
[Evaluating the Dispatchable Capacity of Base Station Backup Batteries](#)

Apr 21, 2021 · Cellular base stations (BSs) are equipped with backup batteries to obtain the uninterruptible power supply (UPS) and maintain the power supply reliability. While ...



[Understanding Backup Battery Requirements ...](#)

Mar 7, 2025 · Telecom base stations require reliable backup power to ensure uninterrupted communication services. Selecting the right backup battery ...





[Telecom Base Station Backup Power Solution: Design Guide ...](#)

Jun 5, 2025 · Discover the 48V 100Ah LiFePO4 battery pack for telecom base stations: safe, long-lasting, and eco-friendly. Optimize reliability with our design guide.



[\(PDF\) Dispatching strategy of base station backup power supply](#)

Apr 1, 2023 · With the mass construction of 5G base stations, the backup batteries of base stations remain idle for most of the time. It is necessary to explore these massive 5G base ...

[Securing Backup Power for Telecom Base Stations - leagend](#)

Mar 17, 2025 · One of the most critical components of any telecom base station is its backup power system. This article will explore in detail how to secure backup power for telecom base ...



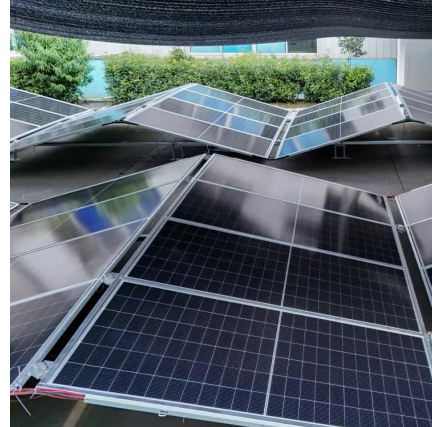
[How long can the base station backup power supply be used?](#)

How long can your base station energy backup duration truly sustain critical communications during grid failures? With 68% of cellular network outages originating from power disruptions ...



[What Are the Critical Aspects of Telecom Base Station Backup ...](#)

Telecom base station backup batteries are essential for ensuring uninterrupted communication by providing reliable, long-lasting power during outages. Critical aspects include battery ...



[How long can the base station backup power supply be ...](#)

Oct 21, 2025 · A telecom battery backup system is a comprehensive portfolio of energy storage batteries used as backup power for base stations to ensure a reliable and stable power supply. ...

Contact Us

For catalog requests, pricing, or partnerships, please visit:
<https://www.llsolarenergy.co.za>

Scan QR Code for More Information



<https://www.lsolarenergy.co.za>