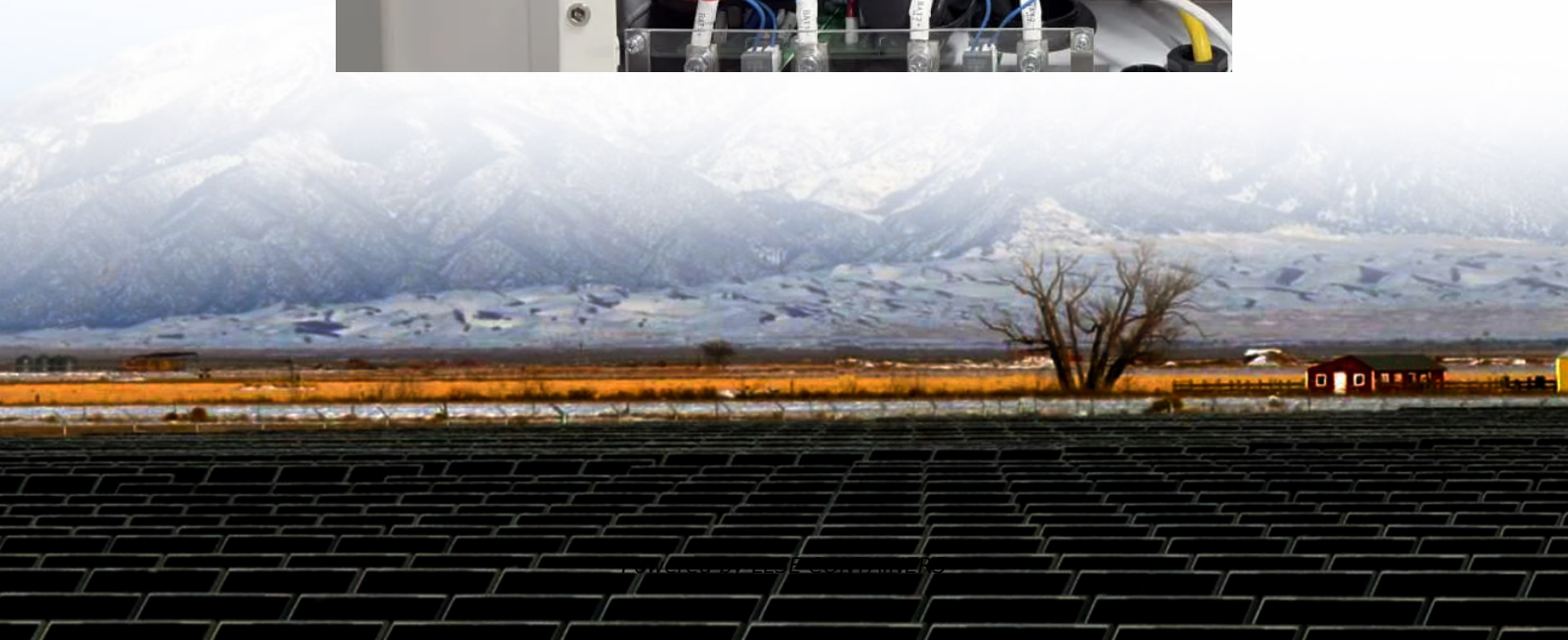
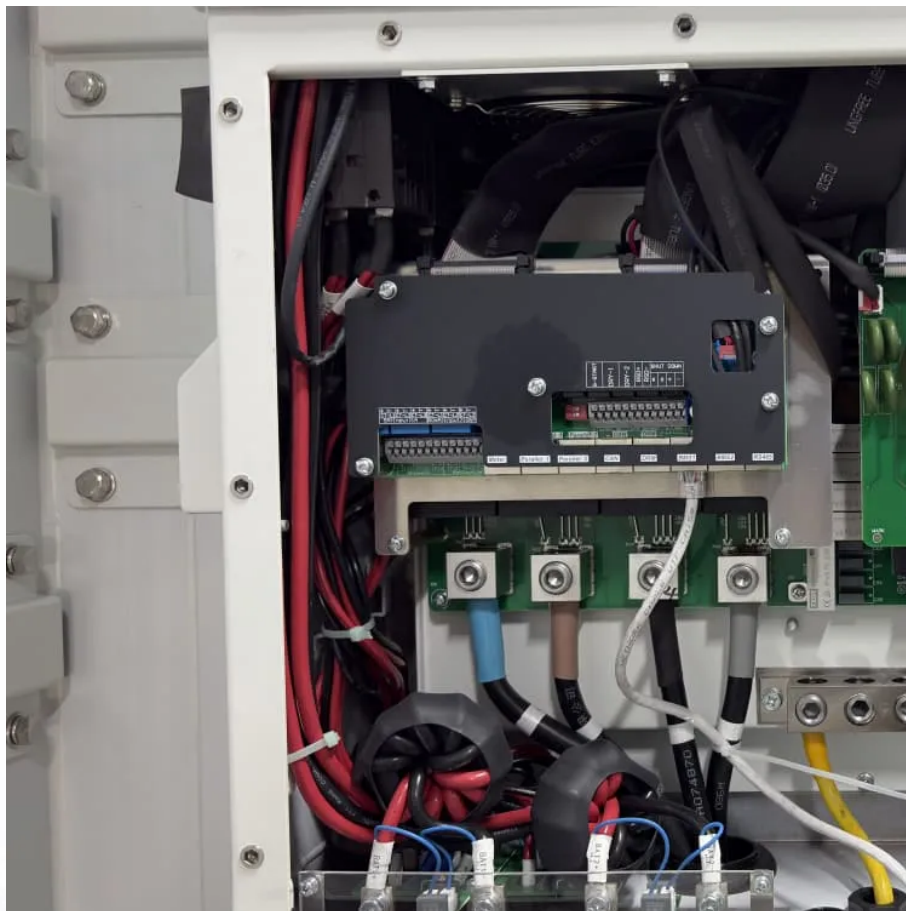


How many batteries can be used for a 48v inverter





Overview

How many amps does a series battery inverter use?

So if the battery current limit is 20 amps, and there are two batteries in parallel, the inverter must provide 40 amps ($20A \times 2$ batteries). This is not the case if the battery bank is configured in a series, because all the batteries have a similar current. Connect Batteries in a Series.

What is the recommended battery size for an inverter?

Interpreting Results: Once you input the required data, the calculator will generate the recommended battery size in ampere-hours (Ah). For instance, if your power consumption is 500 watts, the usage time is 4 hours, and the inverter efficiency is 90%, the calculator might suggest a battery size of approximately 222 Ah.

How many batteries can a 36V inverter charge?

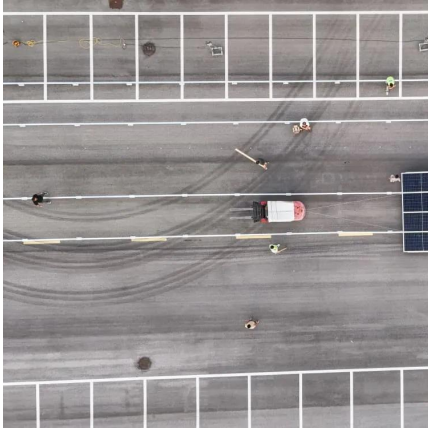
If there are three 12V 200ah batteries, the battery voltage is 36V ($12V \times 3 = 36$). An inverter with a 36V can recharge these batteries. The maximum capacity is 600ah ($200 \times 3 = 600$). Battery Parallel Connection. If the battery bank is connected in parallel, the battery bank capacity increases but the battery voltage is the same as each cell.

Can a 12V inverter be connected to a 24v battery?

Let's say you have a 12V inverter and try to connect two 12V batteries in series. You would end up inputting 24V to the inverter and cause an overload. This could cause damage to your equipment, at the very least your inverter will shut down to protect itself.



How many batteries can be used for a 48v inverter



[Calculate Battery Size For Any Size Inverter \(Using Our ...](#)

Mar 3, 2023 · Instructions! Inverter runtime: is the total number of hours you would need to run your load on an inverter Inverter input Volts (V): Are you using a 12v, 24v, or 48v solar ...

[How Many Batteries do I Need for Hybrid Inverter 10KW?](#)

Nov 23, 2024 · A 48V system voltage means that the total voltage of all connected batteries must sum up to 48V. For a 10kW inverter, you also need to ensure that the battery bank can provide ...



[How Many Batteries Do I Need for a 48V Inverter?](#)

Dec 11, 2023 · How Many Batteries Are Needed for a 48V Inverter? The number of batteries required for a 48V inverter largely depends on the inverter's power output and the desired ...

[Calculate Battery Size for Inverter Calculator](#)

Mar 14, 2025 · The Calculate Battery Size for Inverter Calculator helps you determine the optimal battery capacity needed to support your inverter system. By inputting critical parameters



such ...



[48V Inverter: The Ultimate Guide to Efficient and Scalable ...](#)

May 19, 2025 · Safety, Certifications, and Warranty FAQs About 48V Inverters What exactly does a 48V inverter do? Is a 48V inverter more efficient than a 24 volt dc inverter? Can I use a 48V ...



[How Many Batteries Do I Need for a 5000W Inverter?](#)

Mar 27, 2025 · Series vs. Parallel For a 5000 watt power inverter, many people choose 24V or 48V systems to reduce current. Wiring in series increases voltage while wiring in parallel ...



[How Many Lithium Batteries to Supply a 5KW Inverter](#)

Oct 15, 2024 · To power a 5KW inverter for 8 hours, you would typically need around 5 lithium batteries of 48V 200Ah capacity. If you need the system to run for 12 hours, you would require ...



How Many Batteries Do You Need for a 5kVA Inverter

Dec 4, 2025 · A 5kVA inverter generally needs 4 batteries (48V system), but depending on the inverter model, you might need 8 or 10 batteries. Your battery choice--150Ah, 200Ah, tubular, ...



Contact Us

For catalog requests, pricing, or partnerships, please visit:
<https://www.llsolarenergy.co.za>

Scan QR Code for More Information



<https://www.llsolarenergy.co.za>