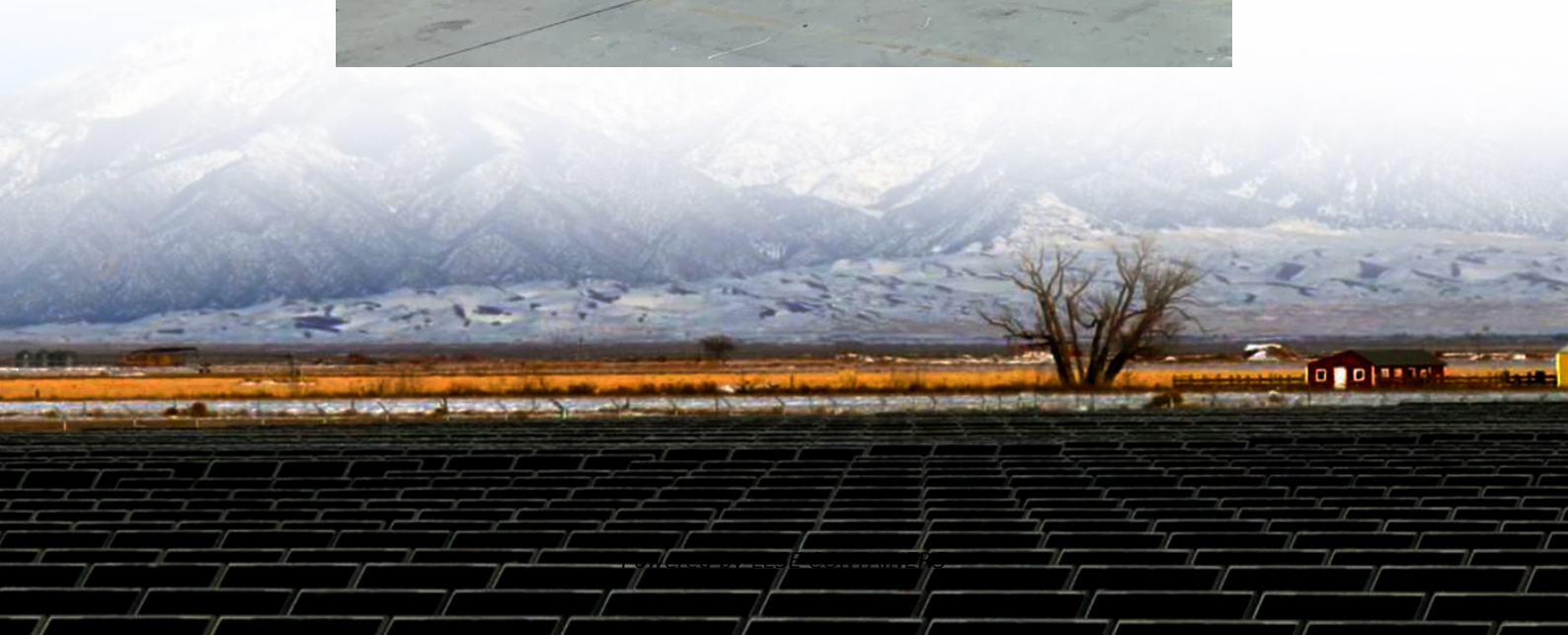


How many generators are there in the San Diego power station





Overview

How many power plants are in San Diego County?

There is one power plant for every 25,653 people in San Diego County, and one power plant for every 32 square miles. San Diego County ranks 43rd of 58 counties in California for number of power plants per capita, and 9th of 58 counties for number of power plants per square mile.

How much energy does San Diego Gas & Electric Co generate?

San Diego Gas & Electric Co generated 379.5 GWh during the 3-month period between September 2024 to December 2024. According to FERC EQR data, San Diego Gas & Electric Co had a total of \$142.8M in seller transactions and \$220.0M in buyer transactions in 2025 Q2.

Where can I find a power plant map?

Access the map [here](#). Synapse has developed a free-to-use interactive map of power plants in the United States using data from the U.S. Environmental Protection Agency. This map displays information on location, fuel type, electric generation, generating capacity, ownership, and emissions for over 10,000 power plants across the country.

Where can I find data on power plants?

Data is included for all power plants that were operating from 2018 through 2023. See the map link below for more information on sources and notes. Access the map [here](#). Synapse has developed a free-to-use interactive map of power plants in the United States using data from the U.S. Environmental Protection Agency.



How many generators are there in the San Diego power station



[List of power stations in California](#)

The Argus Cogeneration Plant in San Bernardino County is the only coal-fired power station still operating within the state of California. The Intermountain Power Plant (which is 75% owned ...

[Interactive Map of U.S. Power Plants](#)

4 days ago · Synapse has developed a free-to-use interactive map of power plants in the United States using data from the U.S. Environmental Protection Agency. This map displays ...

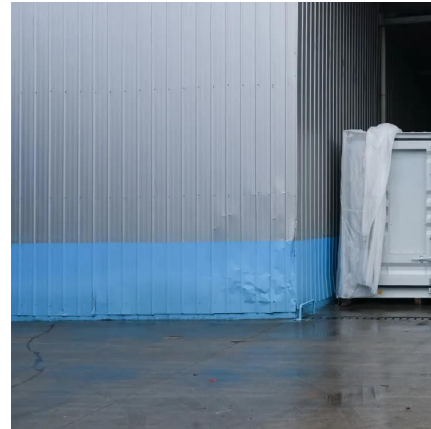


[San Diego, CA Electricity Generation Summary](#)

View all available electricity data in San Diego, CA. View monthly electricity generation, the breakdown by power source, details on the 63 power plants in San Diego, CA, and more.

[Power Plant in San Diego, CA](#)

Dec 15, 2024 · Explore all power plants, power stations and powerhouses in San Diego, San Diego County, CA to get information on electric utilities, electric power generation, electricity ...



[San Diego Gas & Electric Co , Electricity Generation Summary](#)

View all FERC EQR transactions, monthly electricity generation, and details for the 19 power plants operated by San Diego Gas & Electric Co located in San Diego, CA.

Contact Us

For catalog requests, pricing, or partnerships, please visit:
<https://www.llsolarenergy.co.za>

Scan QR Code for More Information



<https://www.llsolarenergy.co.za>