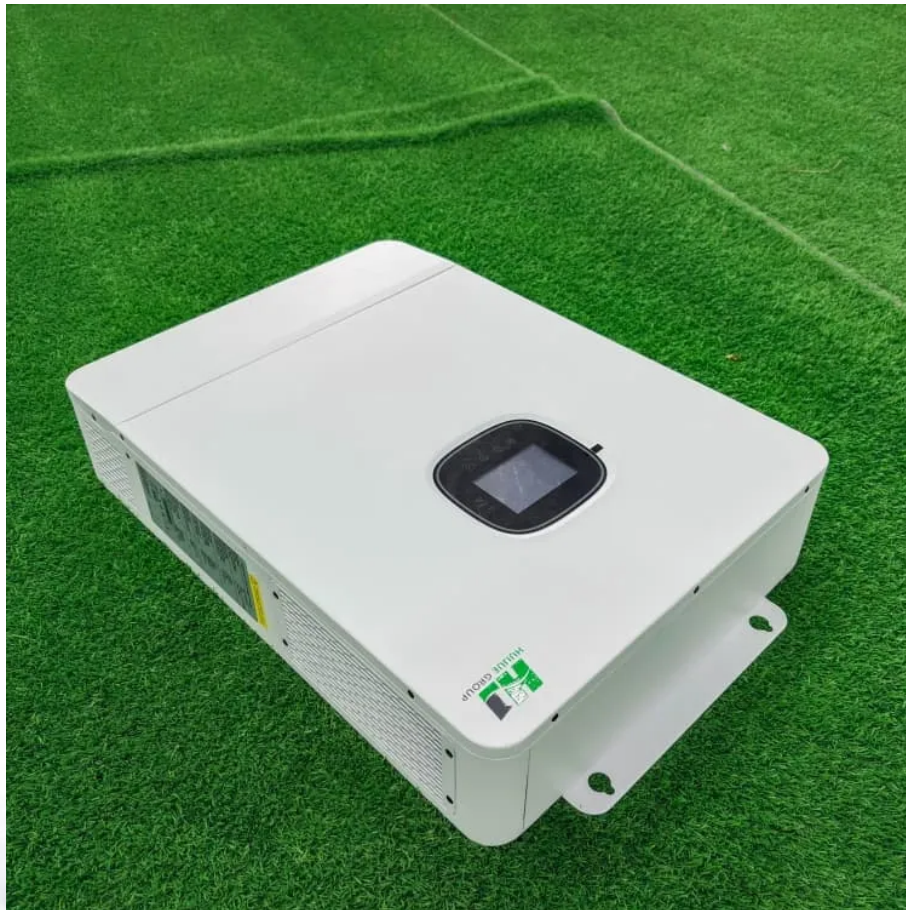


# How many solar panels are needed for a series voltage of 600v





## Overview

---

How many solar panels can a 600V inverter connect?

If an inverter has a maximum input voltage of 600V and each panel produces 40V, you could connect up to 15 panels in series ( $15 \times 40V = 600V$ ). Going over this voltage limit can harm the inverter or make it shut down, making your solar system less effective or even unusable. Equally important is the minimum input voltage.

How many solar panels can I connect in series?

The number of solar panels you can safely connect in series depends on the voltage limits of your MPPT charge controller or hybrid inverter. There are 2 key boundaries to consider: To ensure your system starts charging efficiently, the series voltage must reach at least the MPPT's start voltage.

What is the max power voltage of two solar panels?

The total max power voltage of each two-panel series would be: Then max power current of each two-panel series would be 3.45A. So, in the parallel config, each component would be 31.32V, 3.45A. Remember, in parallel configurations of identical solar panels, the max power voltage is the average voltage of the components.

How many solar panels should be connected to a PV generator?

C) Conclusion: 1. The PV generator (PV array) consists of one string, which is connected to the three phase 5KW inverter. 2. In each string the connected solar panels should be within 4-20 modules. Remark:



## How many solar panels are needed for a series voltage of 600v

---



### [Figuring Out How Many Panels in Series And Parallel Based ...](#)

Mar 23, 2024 · Getting the most power output from your solar panels is key to maximizing their return on investment. Using a Maximum Power Point Tracker (MPPT) charge controller allows ...

### [Solar Inverter String Design Calculations](#)

When solar panels are wired in series strings (that is the positive of one panel is connected to the negative of the next panel), the voltage of each panel is added together to give the total string ...



### [Solar Panel Series and Parallel Calculator](#)

Jul 10, 2023 · How to Calculate Maximum Output Power for Solar Panels in Different Configurations Identical Solar Panels Wired in Series Wiring configurations alter the net ...

### [Solar Panel Series Calculator](#)

1. What is a Solar Panel Series Calculator?  
Definition: This calculator determines the total voltage output when solar panels are connected in series. Purpose: It helps solar installers and DIY ...



### [How Many Solar Panels Can One Inverter Handle?](#)

Sep 23, 2025 · How to Calculate Solar Panel String Size Manually Step 1: Determine Inverter Specifications- Identify the voltage input range of the inverter and any safety margins required ...



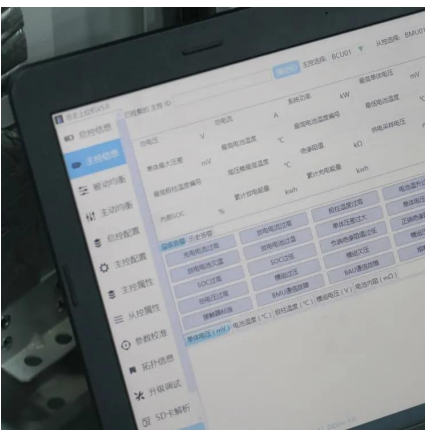
### [How Many Solar Panels Needed to Charge a 48V 200Ah ...](#)

Aug 15, 2024 · Understanding the correct number of solar panels required to efficiently charge a 48V 200Ah battery is crucial for optimizing your solar energy system.



### [How Many Solar Panels Do I Need for a 48V Battery?](#)

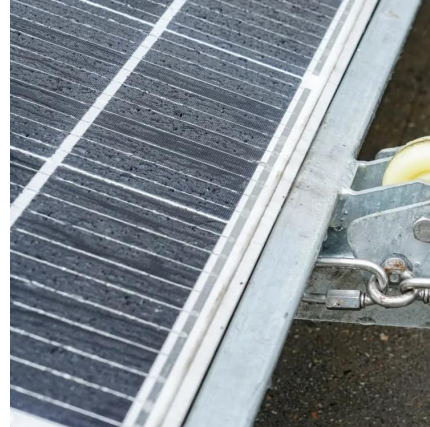
Aug 16, 2024 · Determining the number of solar panels required for a 48V battery system involves understanding your daily energy consumption, battery capacity, solar panel output, and ...





### [How Many Solar Panels Can I Connect to an Inverter? A ...](#)

4 days ago · Learn how to optimize your solar power system by understanding how many solar panels can be connected to an inverter. Explore inverter specifications, wiring configurations, ...



## Contact Us

---

For catalog requests, pricing, or partnerships, please visit:  
<https://www.llsolarenergy.co.za>

### Scan QR Code for More Information



<https://www.llsolarenergy.co.za>