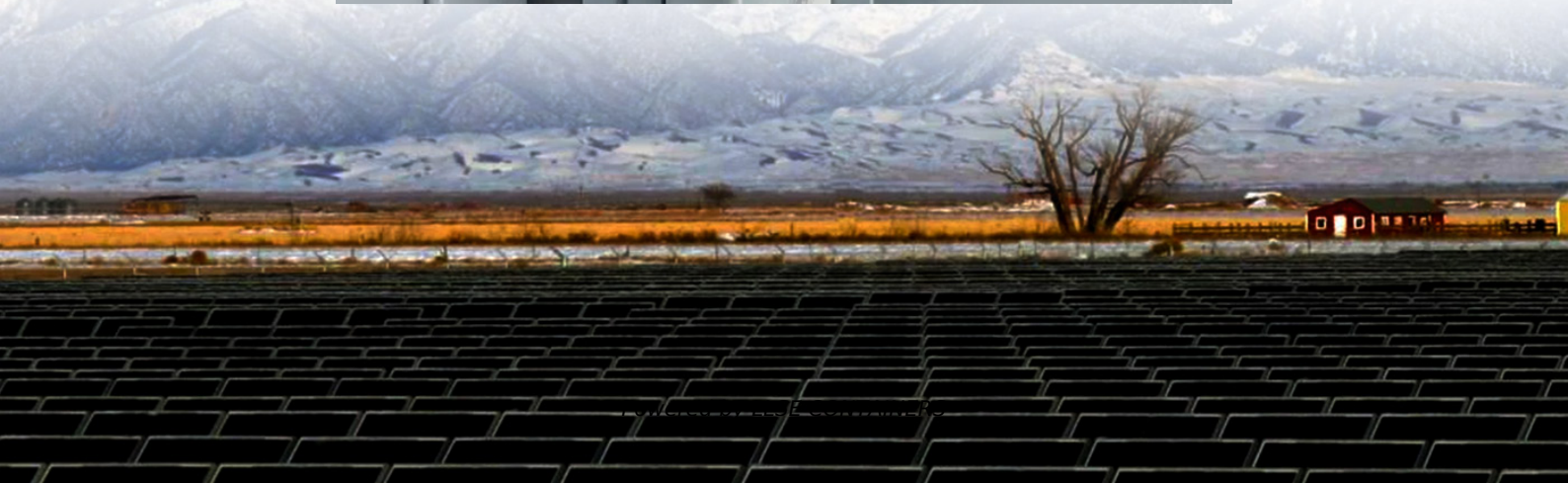


# How many square meters does 1 kilowatt of solar energy require





## Overview

---

How much space does a 1 KW solar panel need?

On average, a 1 kW solar panel system will require between 80 to 100 square feet (7.5 to 9.5 square meters). This means, for every kilowatt of power you plan to generate, you'll need this much space. Let's break this down further. Standard Efficiency Panels (15-18%): These panels are the most common.

How much space does a 5 kW solar system need?

Let's assume you want to install a 5 kW system. Here's how the math works out: Area required = 5 kW × 100 square feet = 500 square feet (46.5 square meters). Area required = 5 kW × 80 square feet = 400 square feet (37 square meters). Thus, your total space requirement for a solar system depends heavily on the type of panels you choose.

How many square feet is a 1kW Solar System?

Each panel has an area of about 1.6-1.8 square meters, thereby implying that the area required for 1kW solar panel amounts to nearly 80-100 square feet for a 1-kW solar system. This measurement assumes the panels are installed at an accurate tilt and spacing value. 4. Cost Factor of the Solar System Set-Up:.

How many watts do you need for a 1 KW solar system?

To get a 1 kW (1000 watts) system, you need a combination of panels, which have equal in common what's or more than 1000 watts. Modern solar panels usually range from 300 watts to 500 watts or more. Let's consider a landscape using 400-watt panels. To reach 1 kW, you need about 2.5 panels.



## How many square meters does 1 kilowatt of solar energy require

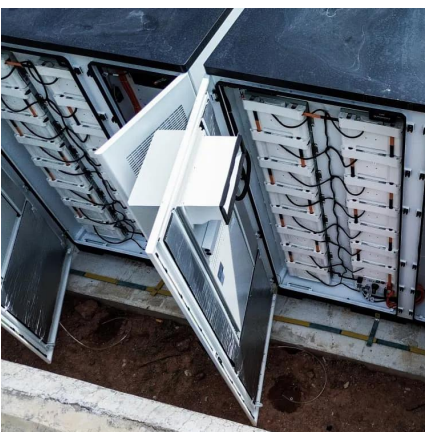


### [area required per kW of solar panels](#)

Oct 24, 2024 · On average, a 1 kW solar panel system will require between 80 to 100 square feet (7.5 to 9.5 square meters). This means, for every kilowatt of power you plan to generate, you'll ...

### [How Much Area Required for 1kW Solar Plant?](#)

With its promise of solar energy, low electric bills and a small carbon footprint, and gained rapid popularity. However, an important question arises before you dive into how much area ...

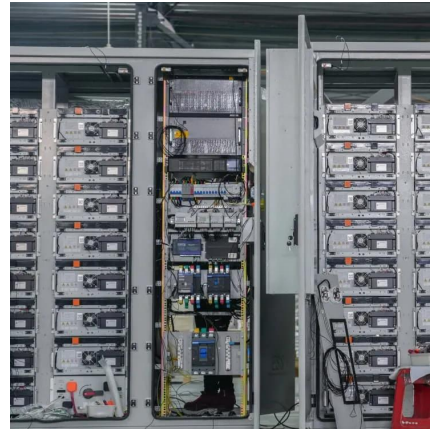


### [How many square meters of solar panels are needed for 1kw?](#)

Oct 8, 2024 · For instance, a location that averages 6 kWh/m<sup>2</sup>/day will, under optimal conditions, require approximately 7 square meters of solar panels to achieve 1 kW of power generation, ...

### [What is the Area of a 1 kW Solar Panel?](#)

Oct 3, 2024 · Solar energy is becoming an increasingly popular alternative to traditional sources of electricity. With the rise in environmental awareness and concerns about climate change, ...



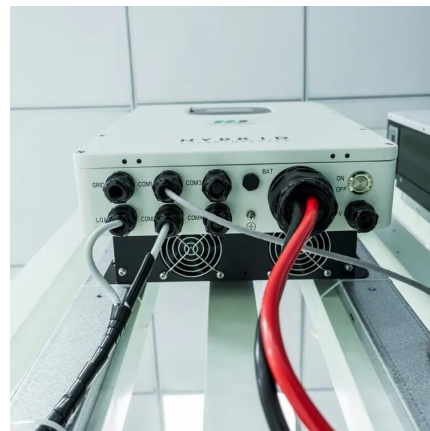
### [How many square meters are needed to install 1 kW of solar power](#)

Feb 1, 2025 · News How many square meters are needed to install 1 kW of solar power?  
01/02/2025 Have you ever wondered how many square meters of space is needed to install 1 ...



### [Total Area Required for Solar Panel Installation Calculator](#)

Oct 10, 2025 · Calculate the total area needed for your solar panel installation quickly and accurately with our easy-to-use solar panel area calculator.



### [How much area is required for 1kw solar panel?](#)

Mar 30, 2025 · The size of a solar panel is measured in watts, and a 1kw solar panel is equivalent to 1000 watts. The physical size of a solar panel can vary depending on the manufacturer and ...





## [How many square meters is 1 kilowatt of solar energy](#)

Feb 21, 2024 · 1. One kilowatt of solar energy typically produces between 8 and 12 square meters of active solar panel space required, depending on the efficiency of the panels, amount of ...



## Contact Us

---

For catalog requests, pricing, or partnerships, please visit:  
<https://www.llsolarenergy.co.za>

## Scan QR Code for More Information



<https://www.llsolarenergy.co.za>