

How many watts does solar energy have per square meter





Overview

What is solar panel watts per square meter (W/M)?

Solar panel watts per square meter (W/m) measures the power output of a solar panel based on its size. Compare solar panels to see which generates most electricity per square meter. A higher W/m value means a solar panel produces more power from a given area. This can help you determine how many solar panels you need for your energy needs.

How much energy does a solar panel produce per square meter?

Given Egypt's high solar irradiance levels, which can reach up to 2200 kWh/m² annually, the potential power output per square meter of a solar panel can be quite significant. For a solar panel with an efficiency of 18%, this translates to an annual energy production of about 396 kWh/m². 1. Choosing the Right Panel.

How do you calculate solar panel output in watts per square meter?

The formula to calculate the solar panel output and how much energy solar panels produce (in watts) using watts per square meter is as follows: Solar Panel Output (W) = Watts per Square Meter (W/m²) × Area of Solar Panel (m²).

How many watts can a solar panel generate?

This means that for every square meter of this solar panel, you can generate 180 watts of power under optimal conditions. Panel Orientation and Tilt: The angle at which the panel is installed can significantly affect its efficiency. Solar panels should be oriented to face the sun as directly as possible throughout the day.



How many watts does solar energy have per square meter



[Solar Power per Square Meter Calculator](#)

Solar Panel Output CalculatorSolar Panels Kwh CalculatorSolar Panel Area Per KwWattage is the output of solar panelsthat is calculated by multiplying the volts by amps. Here, the amount of the force of the electricity is represented by volts. The aggregate amount of energy used is expressed in amps (amperes). Output ratings on most solar panels range between 250 watts to 400 watts.See more on energytheory renewablesb2b

Watts Per Square Meter Solar Panel - Renewable Energy News

Aug 29, 2023 · The amount of solar energy produced in Kilowatt hours per square meter (kWh/m²) depends on the solar irradiance, which is the intensity of sunlight falling on a specific area. On ...

[How many watts per square meter is a solar panel? , NenPower](#)

Aug 7, 2024 · 1. The average power output of a solar panel is approximately 150 to 400 watts per square meter, depending on various factors including the technology used and ...



[Solar Power per Square Meter Calculator](#)

Nov 17, 2023 · A solar power per square meter calculator takes details regarding these factors and then gives the accurate output generated by



the solar panel per square meter.

[Solar Panel Watts Per Square Meter Explained](#)

Final Thoughts Understanding solar panel watts per square meter is important for getting the most out of solar energy. To maximize energy production from solar panels, consider their sunlight ...



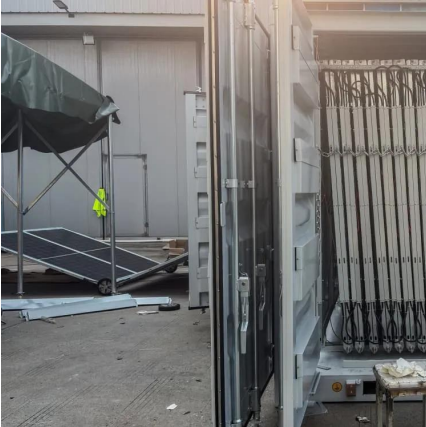
[How to Understand Solar Panel Watts Per Square Meter](#)

Jun 14, 2023 · By evaluating factors such as solar irradiance, angle of incidence, tilt angle, and orientation, one can optimize the watts per square meter produced by solar panels. Different ...

[Solar Panel Output Per Square Meter](#)

Apr 30, 2025 · Discover how much electricity solar panels generate per square meter, explore efficiency factors, technology comparisons, and future innovations in photovoltaic energy.





[Solar Panel Power Per Square Meter: How to Calculate ...](#)

Jul 16, 2025 · explore essentials of calculating solar panel power per square meter, including the factors that influence efficiency and how to make the most of your solar investment.

[Solar Energy Per Square Meter: How Much Power Can You ...](#)

Mar 2, 2025 · As the world increasingly shifts towards renewable energy, it's essential for homeowners and businesses to understand solar energy production comprehensively. This ...



[How many watts of photovoltaic panels per square meter](#)

Oct 7, 2024 · A 400W solar panel can produce around 1.2-3 kWh or 1,200-3,000Wh of direct current (DC). The power produced by solar panels can vary depending on the size ...

[Watts Per Square Meter Solar Panel](#)

Aug 29, 2023 · The amount of solar energy produced in Kilowatt hours per square meter (kWh/m²) depends on the solar irradiance, which is the intensity of sunlight falling on a specific area. On ...





[Solar Energy Generation Per Square Metre: A Complete Guide](#)

Mar 19, 2025 · With the rising demand for renewable energy, solar panels for home have become a popular choice for homeowners looking to reduce electricity bills and contribute to a ...

Contact Us

For catalog requests, pricing, or partnerships, please visit:
<https://www.llsolarenergy.co.za>

Scan QR Code for More Information



<https://www.llsolarenergy.co.za>