

# **How many watts of inverter can a family car drive**





## Overview

---

How many watts can a car battery inverter handle?

A car battery inverter might list “2000W peak / 1500W continuous.” That means it can handle 2000 watts briefly, but only 1500 watts over time.  
Battery Size and Health – If your vehicle’s battery is old or small, it might struggle to support larger car power inverters—especially when the engine isn’t running.

How much inverter power can a car battery support?

There is a theoretical limit to the amount of inverter power that can be supported by an automotive battery. Theoretically, the maximum supported inverter power can be calculated by multiplying the battery capacity (Ah) by the battery voltage (V) multiplied by the discharge multiplier (C-rate).

Can a car battery run a 2000 watt inverter?

A car battery cannot run a 2000-watt inverter. The power demand exceeds the car battery’s capacity when you load the inverter. Does A Power Inverter Drain A Car Battery?

It is a device used to convert DC electricity to alternating current.

Can a 12 volt car battery support a high power inverter?

Typically, a 12-volt car battery can support an inverter with a power range of about 150 watts to 1500 watts. Please note, however, that car batteries are not suitable for driving high power inverters for extended periods of time, which may cause damage to the battery.



## How many watts of inverter can a family car drive

---



### [What size inverter can you run off a car battery?](#)

Aug 11, 2025 · A typical 12-volt car battery can safely support an inverter ranging from about 150 watts up to 600 watts for regular use without harming the battery. While it is technically ...

### [Best Watts For Inverter Car Use \[Updated: August 2025\]](#)

Aug 4, 2025 · The ideal wattage range for common car inverter models typically falls between 150 to 300 watts. This range allows users to power small electronics such as laptops, ...



### [How Big of an Inverter Can My Car Battery Handle?](#)

Mar 26, 2025 · When considering connecting an inverter to your car battery, the first question we need to clarify is: how much power can your car battery actually support an inverter? Typically, ...

### [How Big Of an Inverter Can My Car Handle , Expert Guide](#)

Let's learn how big of an inverter can my car handle. While you may not know the exact power of your car's electrical system, it's essential to understand that a single inverter can only



connect ...



### [Can a Car Run a 3000 Watt Inverter?](#)

Jul 13, 2023 · A 3000-watt inverter is a powerful device that can provide a significant amount of electrical power. However, when it comes to using such an inverter in a car, there are several ...



### [The Essential Car Inverter Buying Guide for Every Vehicle ...](#)

Sep 15, 2024 · The connection method of a car power inverter can significantly affect both the type of devices you can power and the installation process: Cigarette Lighter Connection: ...



### [How To Choose The Right Power Inverter For Your Car](#)

Sep 24, 2021 · Before you jump at the cheapest power inverter for your car, there are some things you need to know, like: o How much can your power port handle o How many watts of power ...





## [Inverter for Car: Everything You Need to Know Before You ...](#)

Jun 17, 2025 · Power up on the go with an inverter for car--discover how to use it safely, what to run, and how to protect your battery. A must-read for every driver!

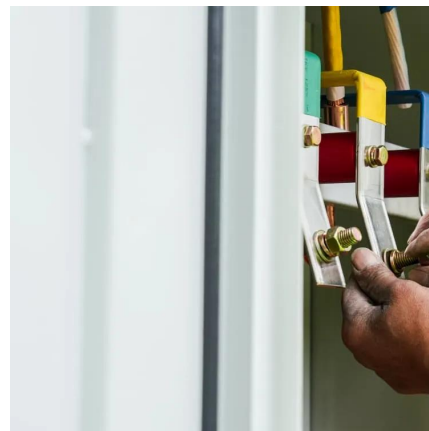


## [How Big of an Inverter Can My Car Handle: Explained with ...](#)

Apr 1, 2023 · If you're planning to power your electronics or appliances while on the go, you may need an inverter. But before you go ahead and buy one, you need to know how big of an ...

## [How Big Of an Inverter Can My Car Handle , Expert Guide](#)

How to Determine The Inverter Size That Your Car Can handle?What's The Biggest Inverter My Car Can handle?Is Bigger Inverter Better?What Factors Affect The Size of An Inverter Required to Power A Car?Frequently Asked QuestionsConclusionInverter sizing does base on the load that the inverter must supply. This load can find on the inverters continuous power rating (measured in Watts) multiplied by 1.3 to 1.5. Let's say that I want a 1000 Watt continuous power inverter. The minimum inverter size that I would need would be 1,300 Watts. I could use a smaller invert...See more on automotivex tradecarhub

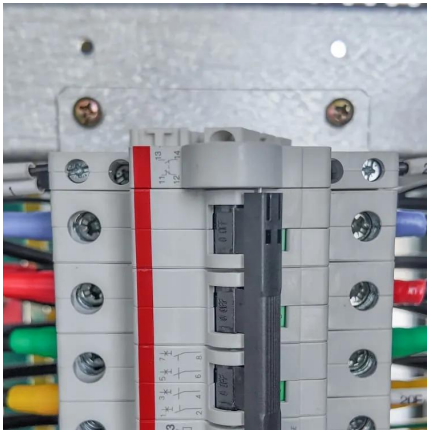


## **How Big of an Inverter Can My Car Handle: Explained with Expert Tips**

Apr 1, 2023 · If you're planning to power your electronics or appliances while on the go, you



may need an inverter. But ...



### [How Big of an Inverter Can My Car Handle](#)

Jun 20, 2023 · Conclusion The size of the inverter that a car can handle is determined by the amount of power that the car's battery can provide. The typical 12 volt car battery can provide ...

## Contact Us

---

For catalog requests, pricing, or partnerships, please visit:  
<https://www.llsolarenergy.co.za>

### Scan QR Code for More Information



<https://www.llsolarenergy.co.za>