

How many watts of solar energy is needed per square meter





Overview

What is solar panel watts per square meter (W/M)?

Solar panel watts per square meter (W/m) measures the power output of a solar panel based on its size. Compare solar panels to see which generates most electricity per square meter. A higher W/m value means a solar panel produces more power from a given area. This can help you determine how many solar panels you need for your energy needs.

How much energy does a square meter of solar panels generate?

On a clear day with high solar irradiance, a square meter of efficient solar panels can generate around 150-250 watt-hours (Wh) of energy in an hour. It translates to approximately 1.5-2.5 kWh per day. Remember that this is a rough estimate and can vary based on factors such as panel efficiency, geographic location, and weather conditions.

How do you calculate solar panel output in watts per square meter?

The formula to calculate the solar panel output and how much energy solar panels produce (in watts) using watts per square meter is as follows: Solar Panel Output (W) = Watts per Square Meter (W/m²) × Area of Solar Panel (m²).

How many Watts Does a solar panel use per square foot?

The average solar panel's wattage per square foot is 15 watts, though high-efficiency panels can achieve 20+ watts per square foot. Standard residential panel dimensions are approximately 17.5 square feet (6.5' × 3.25'), while commercial panels typically measure around 21 square feet.



How many watts of solar energy is needed per square meter

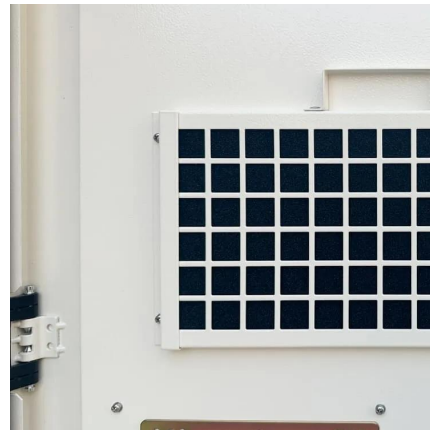


How many square meters of solar energy are needed to generate one watt

Aug 9, 2024 · To accurately assess how many square meters of solar panels are needed to produce one watt of electricity, several metrics must be evaluated. This includes the power ...

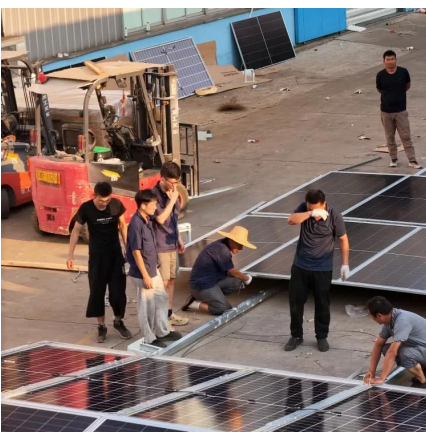
How many square meters of solar energy is one solar watt

Oct 11, 2024 · In the realm of solar energy, one watt of solar power can be understood through various metrics. 1. A solar watt represents a measurement of power; 2. The energy produced ...



How many watts of photovoltaic panels per square meter

Oct 7, 2024 · A 400W solar panel can produce around 1.2-3 kWh or 1,200-3,000Wh of direct current (DC). The power produced by solar panels can vary depending on the size ...



Watts Per Square Meter Solar Panel

Aug 29, 2023 · The amount of solar energy produced in Kilowatt hours per square meter (kWh/m²) depends on the solar irradiance, which is the intensity of sunlight falling on a specific area. On ...



[Solar Energy Per Square Meter: How Much Power Can You ...](#)

Mar 2, 2025 · As the world increasingly shifts towards renewable energy, it's essential for homeowners and businesses to understand solar energy production comprehensively. This ...



[Solar Panel Wattage Calculation: How To Calculate In 2025?](#)

Solar Panel Wattage Calculations: The Complete Guide to Power Output and Efficiency Optimization for Professional Installers
Understanding solar panel wattage calculation has ...



[Solar Panel Output Per Square Meter](#)

Apr 30, 2025 · Discover how much electricity solar panels generate per square meter, explore efficiency factors, technology comparisons, and future innovations in photovoltaic energy.



Solar Energy Generation Per Square Metre: A Complete Guide

Mar 19, 2025 · With the rising demand for renewable energy, solar panels for home have become a popular choice for homeowners looking to reduce electricity bills and contribute to a ...



How Many Solar Panels Do I Need To Power a House in 2025?

2 days ago · Next, determine how many peak sun hours your location gets A big factor in determining how many solar panels you need to power your home is the amount of sunlight ...

Contact Us

For catalog requests, pricing, or partnerships, please visit:
<https://www.llsolarenergy.co.za>

Scan QR Code for More Information



<https://www.lsolarenergy.co.za>