

How much capacity does a 10kw inverter drive





Overview

What size inverter for a 10kW Solar System?

What Size Inverter For 10kw Solar System: For a 10kW solar system, you typically need an inverter with a capacity of around 10,000 to 13,000 watts to handle the output efficiently. Let's explore more how to match your solar array with the ideal inverter to get the most out of your investment.

Why should you choose a 10kW inverter?

System expansion capabilities allow growth as energy needs increase. Many 10kW inverters support parallel operation up to 60kW total capacity, providing substantial scalability for residential and commercial applications. Load balancing considerations become important with multiple inverters.

How much does a 10kW inverter cost?

The ExpertPower 10kW inverter at \$2,399 provides exceptional solar input capacity with 12kW PV handling capability. This 120% DC oversizing maximizes energy harvest during partial shading or low-light conditions, improving overall system performance. Parallel operation up to 60kW total capacity offers excellent scalability for growing energy needs.

Should you use a 10kW inverter for solar energy storage?

For homeowners seeking comprehensive backup solutions, implementing a solar energy storage system with a 10kW inverter provides reliable power independence during grid outages. Large homes with high energy consumption benefit from 10kW inverters' substantial power capacity.



How much capacity does a 10kw inverter drive

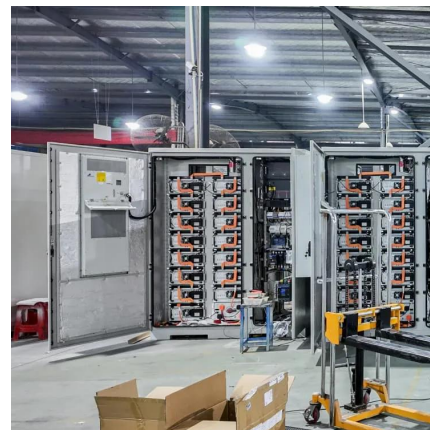


[What size inverter for 10kw solar system](#)

Feb 10, 2025 · How to choose the appropriate inverter size for a 10kw solar system to maintain its optimal operation? Let's explore together.

[How big an inverter should I use for a 10kw photovoltaic](#)

Under the Clean Energy Council rules for accredited installers, the solar panel capacity can only exceed the inverter capacity by 33%. That means for a typical 5kW inverter you can go up to a ...

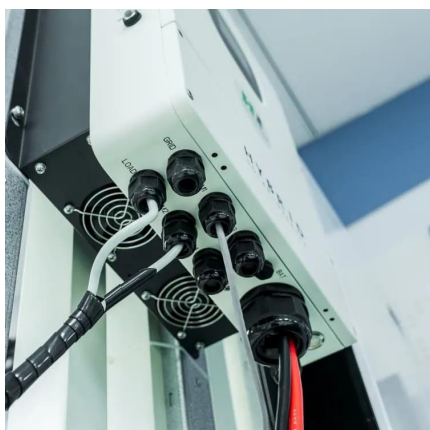
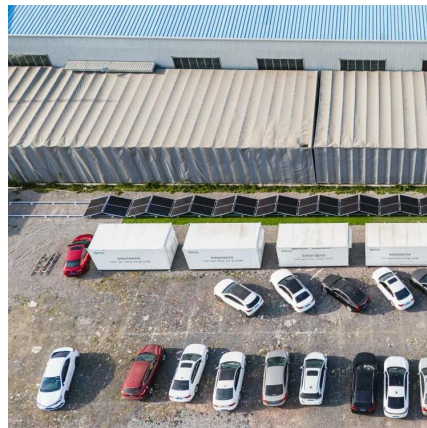


[10kW Inverters: Complete Guide To Choosing & Installing ...](#)

Nov 17, 2025 · Many 10kW inverters support parallel operation up to 60kW total capacity, providing substantial scalability for residential and commercial applications. Load balancing ...

[What Can a 10KW Inverter Run?](#)

Aug 21, 2025 · Q5: How many batteries are needed for a 10kW inverter? Typically, a 10kW inverter requires 8 to 12 12V batteries (e.g., 200Ah), depending on the battery capacity and ...

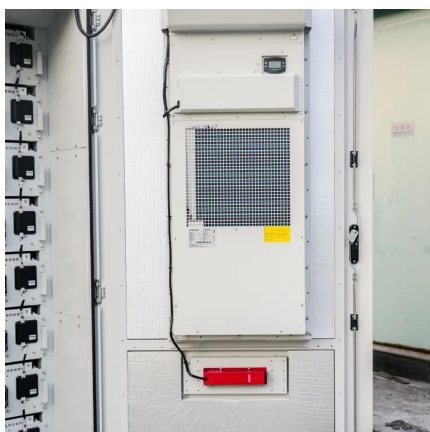


[What Loads Can a 10 kW Inverter Operate?](#)

Many modern inverters can provide short-term high power output to cope with sudden loads. For example, the initial starting currents of motorized appliances can impose a sudden load ...

[Understanding the 10000W Inverter - Power, Performance, ...](#)

Apr 23, 2025 · Explore the power of a 10000W inverter, learn the difference between kilowatt vs kVA, and find the best setup for your home or solar system.



[10kW Off Grid Solar Inverters: Everything You Need to Know](#)

Sep 17, 2025 · How Many Solar Panels are Needed For a 10kw Off-Grid Solar Inverter? Short answer: it depends on the panel wattage you choose and how much solar energy you want ...



[What Size Inverter For 10kw Solar System?](#)

What Size Inverter For 10kw Solar System: For a 10kW solar system, you typically need an inverter with a capacity of around 10,000 to 13,000 watts to handle the output efficiently.

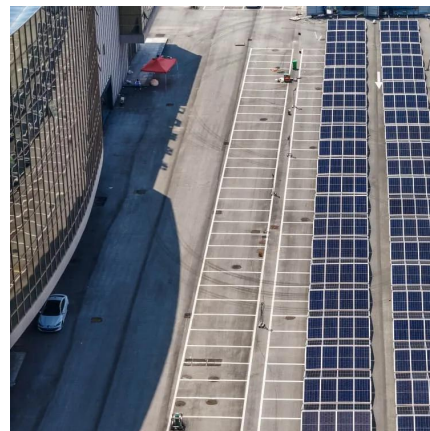


[What size inverter for 10kw solar system](#)

Feb 10, 2025 · How to choose the appropriate inverter size for a 10kw solar system to maintain its optimal operation? Let's explore together.

[10 Kilowatt Inverters: Your Complete Guide to Solar Energy ...](#)

May 7, 2025 · The Ultimate Guide to 10 Kilowatt Inverters In the world of renewable energy, inverters play a critical role in converting the direct current (DC) generated by solar panels into ...



[How to Choose the Best 10kw Inverter for Solar & Backup ...](#)

Dec 3, 2025 · About 10kw Inverter A 10kw inverter is an electrical device designed to convert direct current (DC) power--typically from solar panels or battery banks--into alternating ...



What Size Inverter For 10kw Solar System?

What Size Inverter For 10kw Solar System: For a 10kW solar system, you typically need an inverter with a capacity of around 10,000 to 13,000 watts ...



Contact Us

For catalog requests, pricing, or partnerships, please visit:
<https://www.llsolarenergy.co.za>

Scan QR Code for More Information



<https://www.llsolarenergy.co.za>