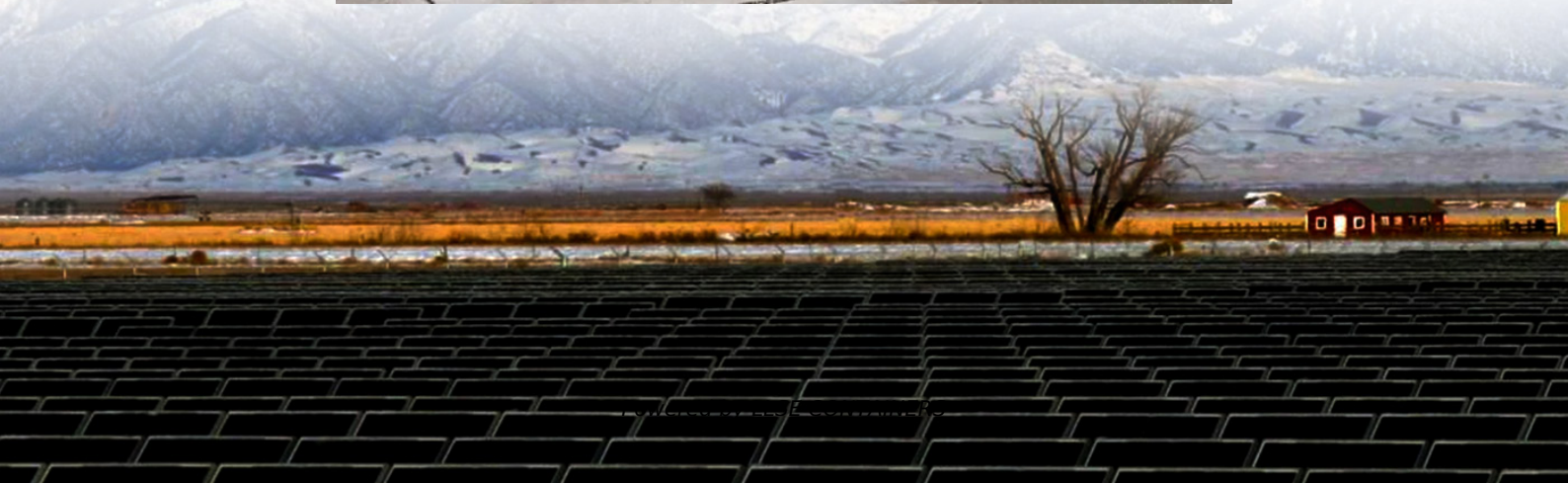


How much inverter capacity should a 50kw power station be equipped with





Overview

Generally, it's recommended to size the inverter to 80-100% of the DC system's rated capacity. How many solar panels can a 5 kW inverter use?

You will also need to consider the wattage of the solar panels you plan to use. For example, if you have a 5 kW inverter and each of your solar panels is rated at 300 watts, you can calculate the maximum number of panels by dividing the inverter's capacity by the panel wattage: $5,000 \text{ watts (inverter)} / 300 \text{ watts (panel)} = \text{approximately } 16.67$.

How to calculate solar inverter capacity?

Step-by-Step Calculation of Inverter Capacity The first step is to calculate the total DC capacity of the solar array. As shown earlier, this is done by multiplying the number of panels by the wattage of each panel. Example: Select an appropriate DC to AC ratio based on the system design.

How big should a solar inverter be?

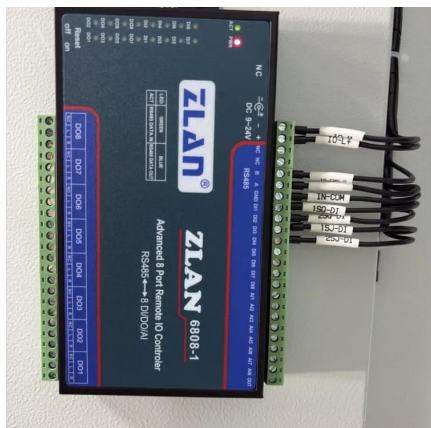
Generally, it's recommended to size the inverter to 80-100% of the DC system's rated capacity. Before determine the inverter size, the most important thing is to calculate your average daily power consumption (kWh) and calculate your solar panel array size to match your power consumption. You could follow our to make this estimation.

How many solar panels can an inverter handle?

To effectively determine the number of solar panels an inverter can handle, you must first assess the size of your solar panel array. The overall capacity of your solar installation is defined by the wattage and number of panels. You can expect that the inverter should match or slightly exceed the combined wattage produced by the solar panels.



How much inverter capacity should a 50kw power station be equipped with

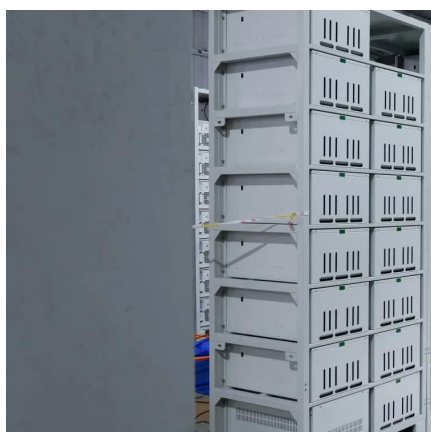


[How to Calculate Inverter Capacity for Grid-Tied Solar PV ...](#)

Sep 23, 2024 · The DC to AC ratio, or Inverter Loading Ratio (ILR), is the ratio of the total DC power generated by the solar panels to the AC rating of the inverter. Typical values for grid ...

[Inverter Size Calculator - self2solar](#)

Feb 20, 2025 · Determining the Inverter Size to Match the Solar Panel Array Determining the correct inverter size depends on your solar array's capacity and your household's power ...



[How big an inverter should a photovoltaic power station ...](#)

Jan 18, 2024 · How do I choose a solar inverter size? To calculate the ideal inverter size for your solar PV system, you should consider the total wattage of your solar panels and the specific ...

[How many solar panels can an inverter handle](#)

Sep 20, 2024 · Key Takeaways: Inverter Capacity: The number of solar panels an inverter can handle is primarily determined by its power rating, usually measured in watts (W). Panel ...



[Solar Inverter Sizing Based on System Power Calculator](#)

Apr 20, 2025 · Calculate the perfect solar inverter size for your system power with our easy-to-use Solar Inverter Sizing Calculator. Optimize efficiency and performance.

[Inverter power and energy storage calculation](#)

A solar panel inverter size calculator allows users to input specific data, such as power consumption and desired backup time, to determine the optimal size of an inverter for their ...



[11 Features You Should Know About Deye 50kW Three Phase](#)

Deye Three Phase hybrid inverter series presents a comprehensive solution tailored to meet the diverse energy needs of residential, commercial and industrial consumers. Among all the ...



[The Complete Off Grid Solar System Sizing Calculator](#)

Jul 2, 2025 · The solar array. The battery bank. The solar charge controller. The power inverter. Simply follow the steps and instructions provided below. PS: For more information, I ...

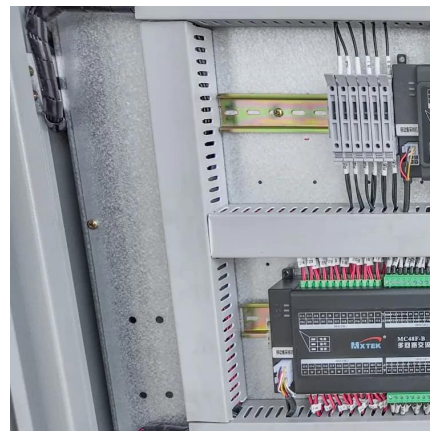


[Frequently Asked Questions about Inverters](#)

Frequently Asked Questions about Inverters How much battery capacity do I need with an inverter? As a rule of thumb, the minimum required battery capacity for a 12-volt system is ...

[Choosing the Right Inverter Size for a 50kW Power Station A ...](#)

SunContainer Innovations - Wondering what inverter size matches your 50kW power station? This guide breaks down key calculations, industry best practices, and real-world examples to help ...



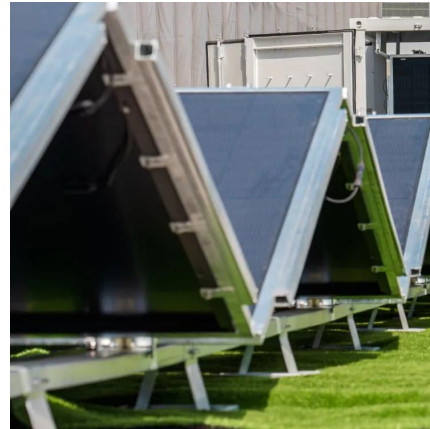
[How to Choose the Right Size Solar Inverter: Step-by-Step ...](#)

Jul 15, 2025 · Wondering what size solar inverter do I need for your solar system? This guide walks you through calculating inverter size based on panel capacity, power usage, and safety ...



[Inverter Capacity Calculator & Formula](#) [Online Calculator Ultra](#)

Oct 3, 2024 · Common FAQs What is an inverter capacity? Inverter capacity is the maximum load in VA (Volt-Amperes) that an inverter can handle. Why should I multiply by 1.25 when ...



Contact Us

For catalog requests, pricing, or partnerships, please visit:
<https://www.llsolarenergy.co.za>

Scan QR Code for More Information



<https://www.llsolarenergy.co.za>