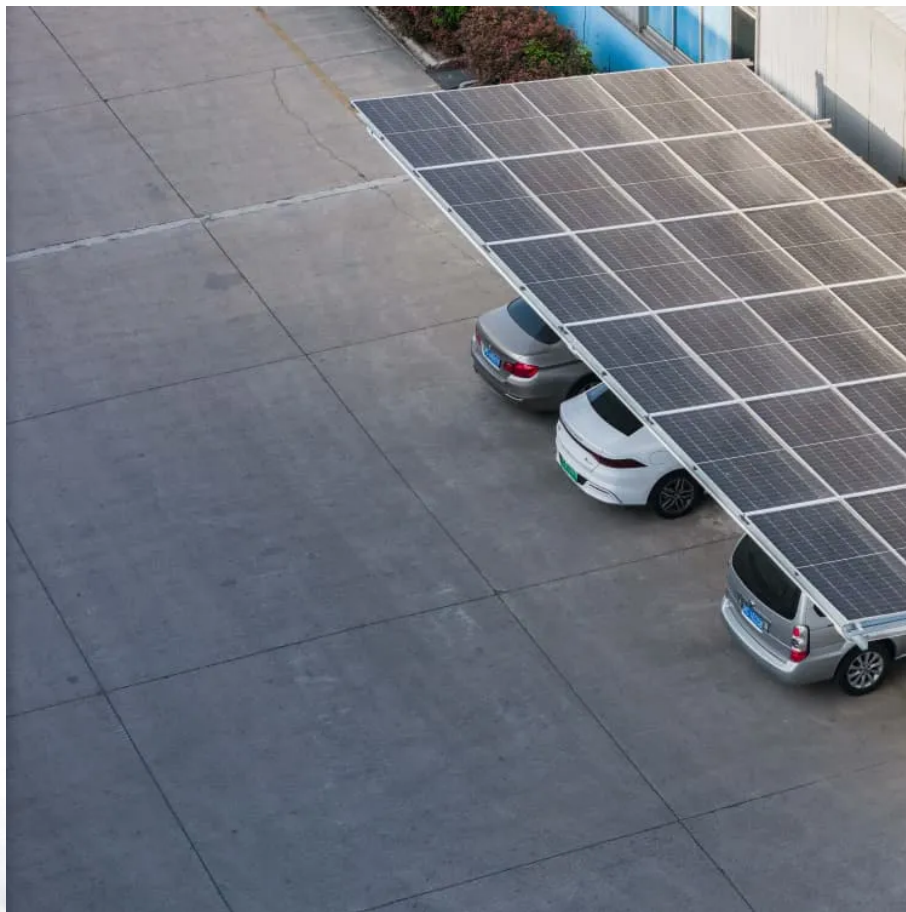


How much is the discharge current of the base station battery





Overview

5G Macro Station: Continuous discharge up to 500A. Urban Small Cell: Peak discharge up to 150A. What does discharge rate mean on a battery?

The discharge rate indicates how quickly a battery can safely deliver energy. Like the charge rate, it's expressed as a multiple of the battery's capacity. 1C Discharge Rate: Discharging a 2000mAh battery at 2000mA. 2C Discharge Rate: Discharging the same battery at 4000mA.

What percentage of a battery should be discharged?

Shallow Discharge: Using only 20–30% of the battery's capacity. Deep Discharge: Using 80–100% of the battery's capacity. Deeper discharges can shorten the battery's lifespan. For example, a battery cycled at 80% DoD may last only 500 cycles, while the same battery cycled at 20% DoD could last 2000 cycles.

What are the discharge characteristics of Li-ion batteries?

You encounter the discharge characteristics of li-ion batteries every time you design a battery pack. These characteristics describe how voltage drops during discharge, how a flat discharge curve supports stable power, and how current, temperature, and chemistry shape performance.

What is a standard discharge rate for a lithium ion battery?

For 3.6/3.7V lithium-ion batteries, the International Electrotechnical Commission (IEC) specifies a "standard discharge rate"- 0.2C. This means that at $20 \pm 5^\circ\text{C}$ and with a cutoff voltage of 2.5V, discharging at 0.2C will measure the actual capacity of the battery.



How much is the discharge current of the base station battery

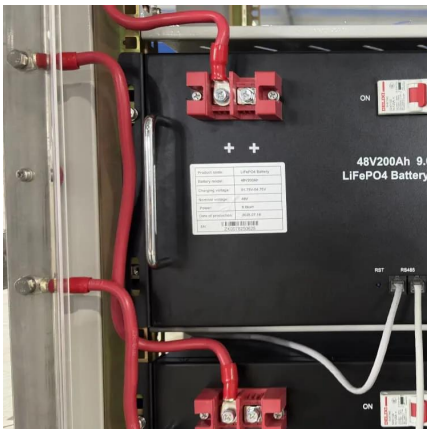
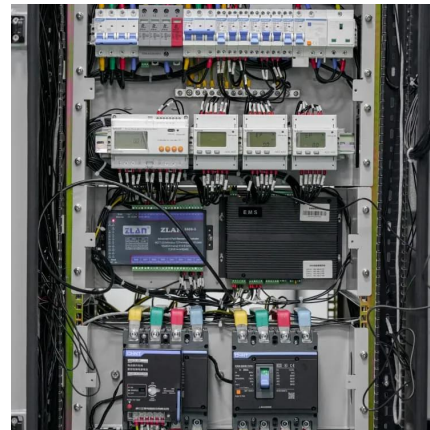


[Battery Charge and Discharge Rate Calculator: ...](#)

Mar 3, 2023 · As you can see, the battery c rating is mentioned as "max. charge current" and "max. discharge current". Battery C rate chart The ...

[BU-501: Basics about Discharging](#)

Oct 27, 2021 · A high load current, as would be the case when drilling through concrete with a power tool, lowers the battery voltage and the end-of-discharge voltage threshold is often set ...



[Grid-Scale Battery Storage: Frequently Asked Questions](#)

Jul 11, 2023 · The current market for grid-scale battery storage in the United States and globally is dominated by lithium-ion chemistries (Figure 1). Due to tech-nological innovations and ...

[Definitions and reference values for battery systems in ...](#)

Aug 1, 2017 · In order to be as close as possible to existing definitions and practical applications, care is taken to be conform to current standards wherever possible in this article. The given ...



5G Base Station Lithium Battery: Capacity and Discharge ...

Sep 26, 2025 · C-rate (discharge rate) defines the relationship between discharge current and rated capacity, reflecting a battery's ability to deliver power. 5G stations demand high ...



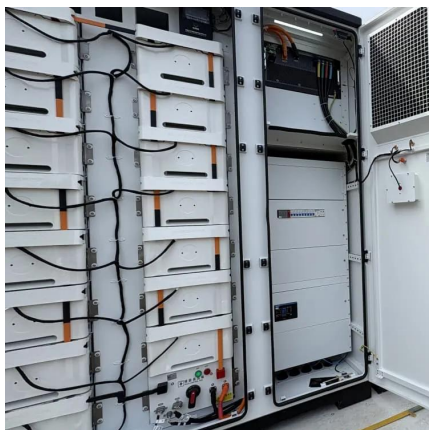
What is the discharge current of the base station lithium ...

Nov 14, 2025 · The discharge current is the amount of current drawn from the battery during use, measured in amperes (A). Li-ion cells can handle different discharge rates, but drawing a high ...



Understanding BESS: MW, MWh, and Charging/Discharging ...

Sep 15, 2024 · Charging/Discharging Speeds: The Significance of C-Rates The charging and discharging speed of a BESS is denoted by its C-rate, which relates the current to the battery's ...





What Are the Discharge Characteristics of Li-ion Batteries

Jul 22, 2025 · Discharge characteristics of Li-ion batteries explain voltage drop, capacity changes, and how current, temperature, and chemistry affect battery performance.



Battery Charging & Discharging: 10 Key Parameters Explained

Mar 19, 2025 · Confused about battery performance? We break down 10 vital battery charging and discharging parameters. Optimize your battery life today!



Battery discharge current

Dec 21, 2011 · The discharge current may alternatively be expressed as a multiple of the rated discharge current. For example, if the battery is specified at the 10 hour rate, $I_{10} = C/10$...



How to Choose the Right Discharge Rate for Battery ...

Aug 19, 2024 · When testing battery capacity, the discharge rate (or discharge current) is a key factor that greatly affects the results. Different brands of battery chargers set various discharge ...



Contact Us

For catalog requests, pricing, or partnerships, please visit:
<https://www.llsolarenergy.co.za>

Scan QR Code for More Information



<https://www.llsolarenergy.co.za>