

How thick is the card slot of the double-glass module





Overview

How much does a glass module weigh?

The weight of glass-glass modules are still an issue, with current designs using 2 mm thick glass on each side for framed modules, the weight is about 22 kg, while 2.5 mm on each side will increase the module's weight to 23 kg. Compared to traditional glass-foil modules, which are about 18 kg, this is a 20% increase in weight.

What is the thickness of a glass module?

The thickness of the front glass generally used for this type of structure is 3.2 mm. Dual-glass type modules (also called double glass or glass-glass) are made up of two glass surfaces, on the front and on the rear with a thickness of 2.0 mm each.

What is the bifaciality of a double glass module?

Bifaciality: The bifaciality of double glass modules produces a gain of around 10-11% compared to the power measured on the front panel alone, for TOPCon type modules under so-called BNPI (bifacial nameplate irradiance) test conditions.

What is a dual-glass module?

Dual-glass type modules (also called double glass or glass-glass) are made up of two glass surfaces, on the front and on the rear with a thickness of 2.0 mm each. Some manufacturers, in order to reduce the weight of the modules, have opted for a thickness of 1.6 mm. Dualsun has chosen to stay with a thickness of 2.0 mm for reasons explained below.



How thick is the card slot of the double-glass module



[Double glass module specifications and dimensions](#)

Nov 5, 2025 · Mechanical constraints on cells: the fact that the structure of the double glass modules is symmetrical implies that the cells are located on a so-called neutral line, the upper ...

[SoleFiori HJT bifacial double glass module](#)

SoleFiori HJT bifacial double glass module 132 version-heterojunction 210mm cell
Power:695~740W Efficiency:23.18% Bifaciality rate: up to 95% Low attenuation: 1% ...



[What is the Double Glass \(Dual Glass\) ...](#)

Apr 18, 2022 · Glass-glass module structures (Dual Glass or Double Glass) is a technology that uses a glass layer on the back of the modules instead ...

[Graphics Card Widths Explained](#)

Jul 18, 2020 · The structure of a graphics card settles a massive undertaking when choosing one for your computer. In this article we will explain the ...



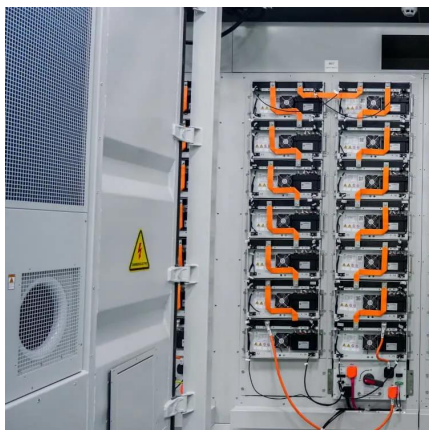
Glass-Glass PV Modules

Glass-Glass module designs are an old technology that utilises a glass layer on the back of modules in place of traditional polymer backsheets. They were heavy and expensive allowing ...



[Graphics Card Slot Types Explained \(GPU ...](#)

Jan 15, 2023 · What is a single, dual or triple slot graphics card? What about 1.5, 2.5 and 2.7 slot GPUs? We explain each GPU size/width, how many ...



[What are the advantages of dual-glass Dualsun modules?](#)

Nov 26, 2025 · Summary table comparing a dual-glass structure to a glass-backsheet structure [1]: Cell technology type: Shingle, 3.2 mm thick glass [2]: Glass thickness of glass-backsheet ...



How thick is the card slot of the double-glass module

How much does a glass module weigh? The weight of glass-glass modules are still an issue, with current designs using 2 mm thick glass on each side for framed modules, the weight is about ...



Why Dual-Glass is the best solar panel ...

Jul 27, 2023 · In contrast, dual-glass solar panels replace the backsheet with a second layer of tempered glass on the rear side of the module. The ...

PCI Sizes & Dimensions

Double-width card: 149mm x 149mm x 8.2mm, allowing only one PMC module to exist on a 6U Euro-Card format Note: The component height off the board is 4.7mm, the reverse side allows ...



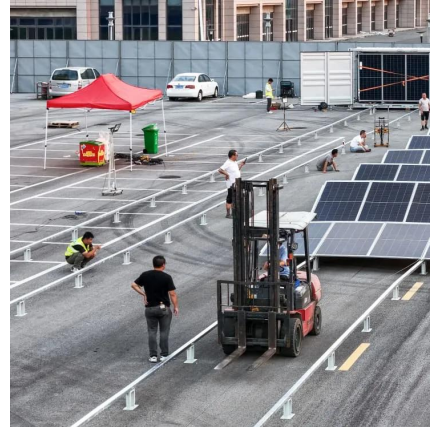
Something About Double-glass PV Modules. Transparent ...

Sep 28, 2025 · It is estimated that the original photovoltaic glass required for the production of 1GW 2.5mm double glass modules, 2.0mm double glass modules, and single glass modules is ...



[Double-glass PV modules with silicone encapsulation](#)

May 21, 2024 · ABSTRACT Double-glass PV modules are emerging as a technology which can deliver excellent performance and excellent durability at a competitive cost. In this paper a ...



[What is the Double Glass Photovoltaic Solar ...](#)

Glass-glass module structures (Dual Glass or Double Glass) is a technology that uses a glass layer on the back of the modules instead of the ...

[EVO 6R 600-625W N Type TOPCon Bifacial Double-glass...](#)

Jun 8, 2024 · Bifacial with Double-Glass Module adopts 182*210mm half cells, bifacial module provide an additional 5%~25% output.



[Photovoltaic double-glass panel glass thickness](#)

The weight of glass-glass modules are still an issue, with current designs using 2 mm thick glass on each side for framed modules, the weight is about 22 kg, while 2.5 mm on each side will ...



[Tempered Glass Thickness: All You Need To Know](#)

Dec 27, 2024 · ? Discover the secrets behind tempered glass thickness! From safety to aesthetics, learn how to choose the ...



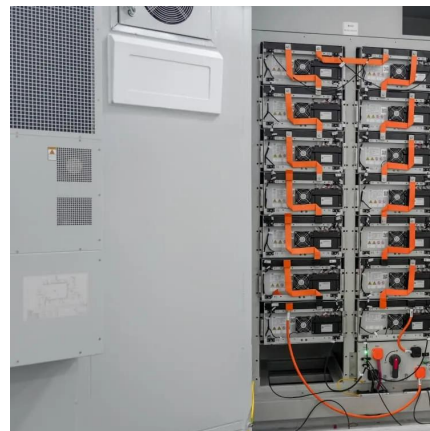
DAS Solar , D-Matrix N-Type DAS-DH144NA 575W-600W Bifacial Double Glass

DAS Solar Co., Ltd. Solar Panel Series D-Matrix N-Type DAS-DH144NA 575W-600W Bifacial Double Glass Module. Detailed profile including pictures, certification details and manufacturer ...



[54 Pcs Bifacial Double Glass Module](#)

The P-type Series 54 Pcs Bifacial Double Glass Module DAS-DH108PA With a lot of power in their compact design, the double-glass design offers more efficiency gains and suits a variety ...



Contact Us

For catalog requests, pricing, or partnerships, please visit:
<https://www.llsolarenergy.co.za>



Scan QR Code for More Information



<https://www.lsolarenergy.co.za>