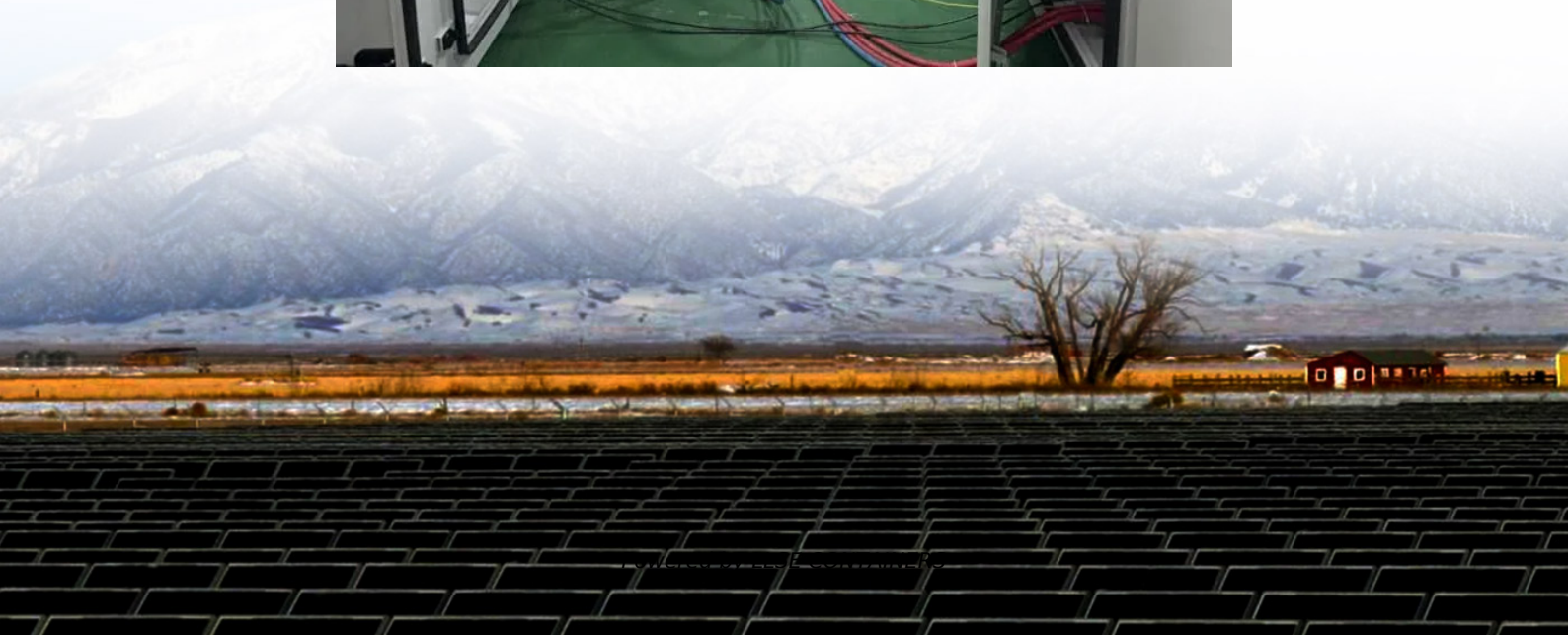


How to calculate the charging current of the battery cabinet





Overview

How to calculate battery charging time?

Below are the formulas for calculating the required battery charging time (in hours) and the necessary charging current (in amperes): Charging Time of Battery = Battery Ah \div Charging Current $t = Ah \div A$ and Required Charging Current for battery = Battery Ah $\times 10\%$ $A = Ah \times 10\%$ Where: t = Time in hrs.

How do you calculate battery charging current?

The charging current can be determined using the formula $I = C/t$, where I is the current in amps, C is the battery capacity in amp-hours, and t is the desired charge time in hours. Understanding these calculations helps prevent overcharging and enhances battery life. How Do You Calculate the Charging Current for a Battery?

.

How do I calculate the charging time of a lithium battery?

To calculate the charging time for a lithium battery, divide the battery capacity by the charging current and add 0.5-1 hours at the end. The charging current is usually marked on the charger.

How long does it take to charge a battery?

Typical charging current: 0.1C to 0.3C Charging time: 6-12 hours Efficiency: ~80% Typical charging current: 0.5C to 1C Charging time: 1-3 hours Efficiency: ~95% Typical charging current: 0.5C Charging time: 2-4 hours Efficiency: ~90% Tips to Optimize Charging Current and Time



How to calculate the charging current of the battery cabinet



[Battery Charging Current Requirement Calculator](#)

Nov 29, 2025 · This Battery Charging Current Requirement Calculator provides an easy, accurate way to determine the ideal charging current and charger power for any battery. Whether you ...

[Battery Charging Calculator - IEC & IEEE Standards](#)

Sep 27, 2025 · Battery charging calculator (IEC & IEEE friendly). Calculate charge current, C-rate, charging time, Wh and energy for lead-acid, Li-ion and NiMH batteries. Copy/paste ready for ...

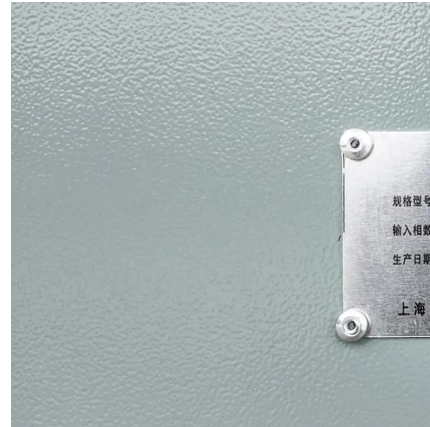


[How To Calculate Battery Charging Current and Time?](#)

Apr 30, 2021 · Individuals who use batteries on large scale do care about battery charging current and time because batteries are delicate and need care. In this article, we'll check out the way ...

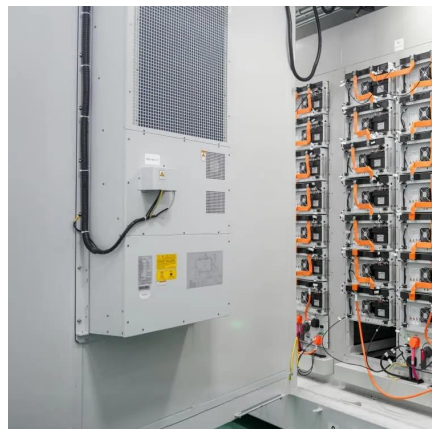
[How to Calculate Battery Charging Time and Current?](#)

1 day ago · Simple Battery Charging Time and Current Formula for Batteries (with 120Ah Battery Example) In this simple tutorial, we will explain how to determine the appropriate battery ...



[How to Calculate Battery Charging Current ...](#)

Jun 20, 2024 · Calculating battery charging current and time is essential for optimizing battery life and performance. Typically, the charging current is ...



[Guide to Calculating Battery Charging Current and Time](#)

Jun 25, 2025 · Guide to Calculating Battery Charging Current and Time 25 Jun 2025 0 Comments Understanding how to calculate Charging Current and Time is essential for anyone working ...



[How to Calculate Battery Charging Time and ...](#)

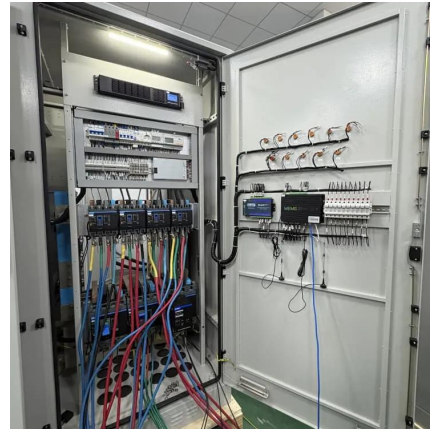
1 day ago · Simple Battery Charging Time and Current Formula for Batteries (with 120Ah Battery Example) In this simple tutorial, we will explain how to ...





[Guide to Calculating Battery Charging Current ...](#)

Jun 25, 2025 · Guide to Calculating Battery Charging Current and Time 25 Jun 2025 0 Comments Understanding how to calculate Charging Current ...



[How to Calculate Battery Charging Current: A ...](#)

Sep 24, 2025 · Answer: To calculate battery charging current, divide the battery capacity (in ampere-hours) by the desired charging time (in hours). For example, a 100Ah battery charging ...



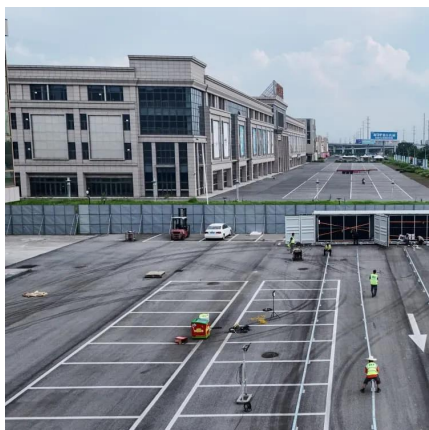
[How to Calculate Battery Charging Current and Time](#)

Jun 20, 2024 · Calculating battery charging current and time is essential for optimizing battery life and performance. Typically, the charging current is set to about 10% of the battery's amp-hour ...



[How to calculate the charging current of the battery cabinet](#)

The Battery Charge Calculator is designed to estimate the time required to fully charge a battery based on its capacity, the charging current, and the efficiency of the charging process.





[How to Calculate Battery Charging Time & Charging Current](#)

Jan 30, 2025 · Welcome to this comprehensive guide on understanding battery charging time and charging current! Whether you're a tech enthusiast, an engineer, or simply someone curious ...



[What Is The Best Charging Current And How To Calculate The Charging](#)

Mar 8, 2022 · Why add 0.5-1 hours? Because when the charger reaches the limited voltage of the charger, constant voltage charging will be performed, the charging current becomes smaller, ...

[How To Calculate Battery Charging Current ...](#)

Apr 30, 2021 · Individuals who use batteries on large scale do care about battery charging current and time because batteries are delicate and ...



[Battery Charging Calculator - IEC & IEEE ...](#)

Sep 27, 2025 · Battery charging calculator (IEC & IEEE friendly). Calculate charge current, C-rate, charging time, Wh and energy for lead-acid, Li-ion ...



[How to Calculate Battery Charging Time](#)

Jan 30, 2025 · Welcome to this comprehensive guide on understanding battery charging time and charging current! Whether you're a tech ...



Contact Us

For catalog requests, pricing, or partnerships, please visit:
<https://www.llsolarenergy.co.za>

Scan QR Code for More Information



<https://www.llsolarenergy.co.za>