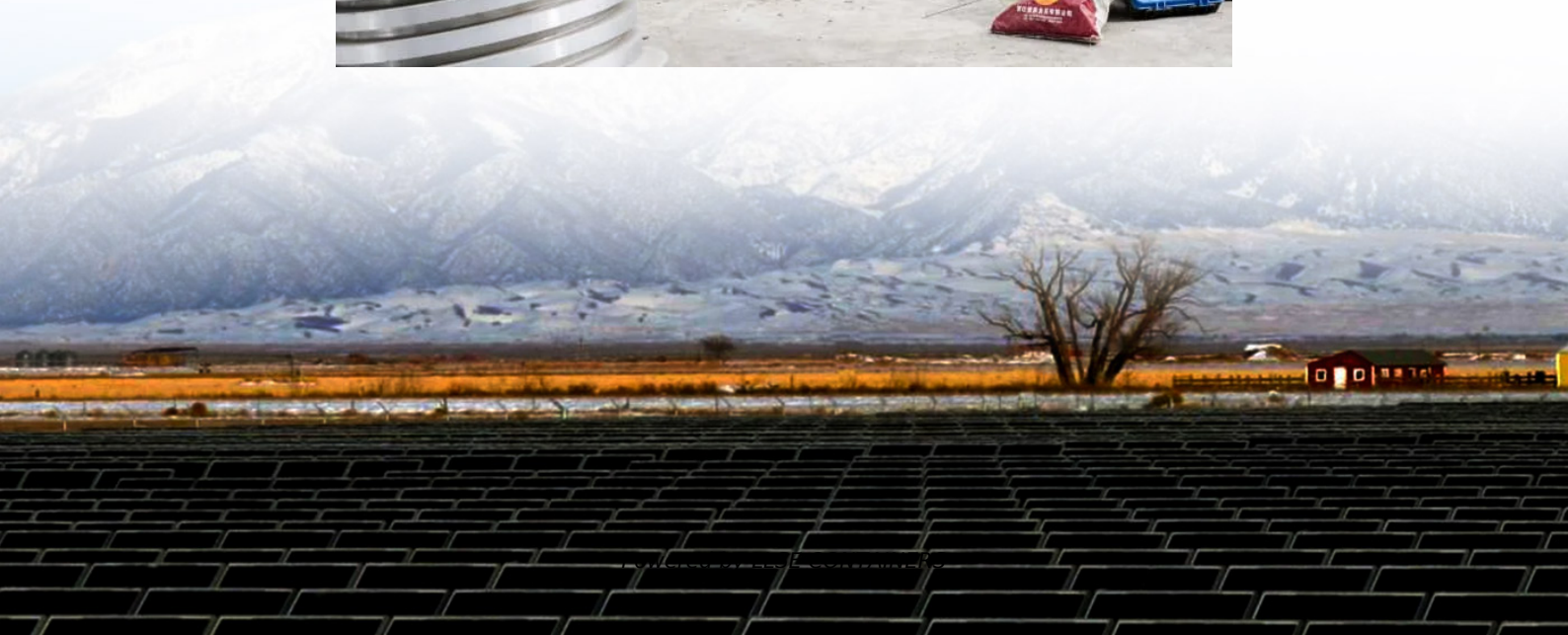


How to check if the base station power supply is good or bad





Overview

How do I know if my power supply is bad?

To tell if your power supply is bad, first conduct a jump start test. It will show you if the power supply actually turns on. This is only a basic test, though. To thoroughly verify if your PSU is bad, perform a multimeter test as well. Grab a multimeter and measure the voltage in each of your ATX power connector's 24 pins.

How do you test a power supply?

Purchase a power supply testing unit. They can be purchased online or at an electronics store and are relatively inexpensive. Turn your PSU off and unplug it from the outlet. This will take away any residual current and help you avoid getting shocked. Connect the PSU's 24 pin connector to the power supply testing unit.

Is my PSU a bad power supply?

The power supply should turn on and fans must rotate. Should the fans not spin, you have a bad power supply. Please be mindful that the fans might spin for a while and come to a halt after a few seconds. This happens because your PSU has a zero-RPM or hybrid fan mode. So, don't yet conclude that your PSU is bad.

How to check if PSU is bad?

Now, MiniTool Solution will show you some signs of power supply failure to help you check if PSU is bad and also tell you how to test PSU. If your computer behaves strangely or crashes randomly, it is difficult to confirm the reasons. Sometimes the computer problem is caused by software issues but sometimes it is triggered by hardware problems.



How to check if the base station power supply is good or bad



[11 Most Common Signs of a Power Supply ...](#)

Dec 2, 2022 · The 11 most common signs of a power supply failure that will occur if the power supply unit going bad or fails as well as the reasons ...

[How to Tell if Your Power Supply Is Bad?](#)

5 days ago · When a power supply starts to fail, it can lead to a range of issues--from system instability to complete hardware failure. Understanding how to tell if your power supply is bad ...



[How to Know If a Power Supply is Bad: Quick Checks!](#)

Nov 7, 2024 · To determine if a power supply is bad, listen for unusual noises and observe any irregular power outputs. Check for physical damage or burning smells from the power supply ...



[How to Tell if PSU Is Failing & Test PSU, Discover a Pro Guide](#)

Nov 27, 2024 · How to tell if PSU is failing? How to test PSU (power supply unit)? Read this post and we will show you some signs of bad PSU and ways to check PSU.



[How to Tell if Your Power Supply or Motherboard Is Bad](#)

Dec 22, 2024 · Signs Your PSU Is Bad Your power supply unit may be bad if your computer won't turn on, it keeps restarting or showing a blue screen, makes strange noises, or has a burning ...



[How to Tell if PSU Is Failing & Test PSU, ...](#)

Nov 27, 2024 · How to tell if PSU is failing? How to test PSU (power supply unit)? Read this post and we will show you some signs of bad PSU and ...



[How to Check a Power Supply: PSU Tester, ...](#)

Oct 31, 2025 · If you can't find a PSU tester, you can check to see if the power supply is completely dead by doing a quick paperclip test or by ...





[Safely Test Your Power Supply Unit \(PSU\): ...](#)

Apr 15, 2024 · Safely Test Your Power Supply Unit (PSU): Step-by-Step Guide and Best Practices April 15, 2024 Last Update: April 15, 2024

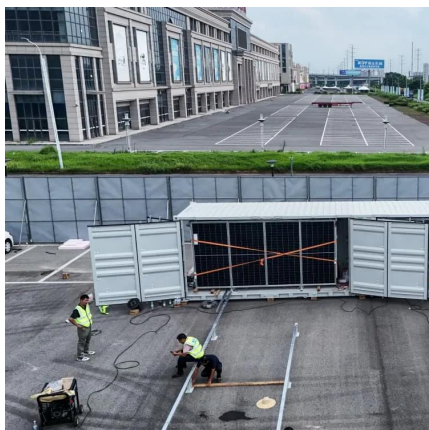
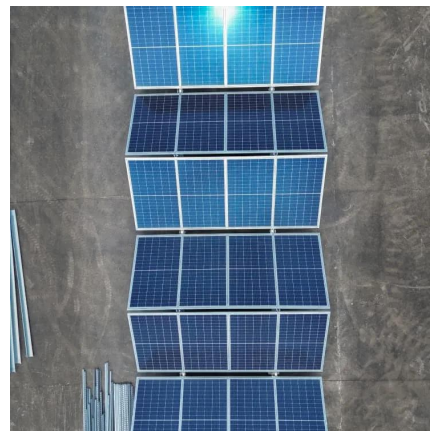


[11 Most Common Signs of a Power Supply Failure of ...](#)

Dec 2, 2022 · The 11 most common signs of a power supply failure that will occur if the power supply unit going bad or fails as well as the reasons behind PSU failure.

Question

Jan 5, 2015 · To definitively test if a Power Supply Unit (PSU) has gone bad, you can follow a few steps. First, perform a visual inspection of the PSU to check for any obvious signs of damage ...



[How To Tell If Your Power Supply Is Bad?](#)

Dec 4, 2023 · To tell if your power supply is bad, first conduct a jump start test. It will show you if the power supply actually turns on. This is only a basic test, though. To thoroughly verify if ...



[Safely Test Your Power Supply Unit \(PSU\): Step-by-Step ...](#)

Apr 15, 2024 · Safely Test Your Power Supply Unit (PSU): Step-by-Step Guide and Best Practices April 15, 2024 Last Update: April 15, 2024



[How to Test the Power Supply Unit \(PSU\) in Your PC](#)

Feb 6, 2023 · Testing your computer's power supply unit is fairly simple. You can test the PSU with a basic jumper test, multimeter, or power supply tester. This will help you rule out power ...

[How to Check a Power Supply: PSU Tester, Paperclip, & More](#)

Oct 31, 2025 · If you can't find a PSU tester, you can check to see if the power supply is completely dead by doing a quick paperclip test or by measuring the power supply's voltage ...



Contact Us

For catalog requests, pricing, or partnerships, please visit:
<https://www.llsolarenergy.co.za>



Scan QR Code for More Information



<https://www.lsolarenergy.co.za>