

How to install the base station power module





Overview

How do I configure a single base station?

Single base stations need a control connection to their site controller. A single base station interfaces to the site controller in the same way as the master base station in a trunked channel group. Select Configure > Network Interfaces > Trunking to configure this. You can program a receiver with the same configuration as a reciter.

How do I connect a PC to a base station?

Remove the local area Ethernet connection and connect an Ethernet patch cable between the PC and the base station. You can use either straight through or crossover Ethernet patch cable with the current base station firmware. Click Start > Settings > Control Panel. Double-click Network Connections.

How do I connect a reciter to a 50W base station?

The DC supply to the reciters is via the system control bus ribbon cable. The connections between modules at the front of a single 50W base station are shown below. The PA is powered by a direct connection from the PMU. The reciter is powered from the PMU via the subrack interconnect board and system control bus ribbon cable.

How do I connect a tb9400 reciter to a base station?

Mount the reciter in a TB9400 subrack and fit the front panel. Power up the subrack. On the front panel display select Modules > Reciter 1 (or 2) > View Reciter 1 (or 2) Address. Connections to the base station can be authenticated by a remote (i.e. centralized) service (Tools > Settings > Authentication).



How to install the base station power module



[How to configure modules for solar base stations , NenPower](#)

Feb 9, 2024 · To configure modules for solar base stations, it is essential to comprehend the specific requirements of the station, the available solar technology, and the in...

[Base station Installation Instructions](#)

Feb 20, 2025 · Keep the base station away from 802.11g Wi-Fi devices, 2.4 GHz peripherals, Bluetooth devices, cordless phones, transformers, motors, flu-orescent lamps, microwaves, ...



[TB9400 Installation and Operation Manual](#)

6 days ago · This power supply is permanently on as soon as the base station has finished powering up, and is available on the auxiliary output connector on the rear panel. You can ...



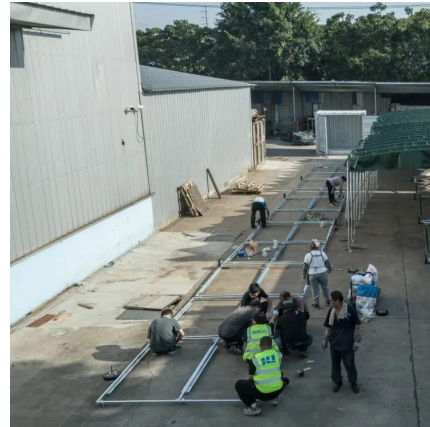
[1785-2.37, A-B Station Module, Installation Instructions](#)

Jul 7, 2014 · Before installing the A-B station module, select an appropriate power supply. See the Allen-Bradley Automation Products Catalog, publication AP-100, for backplane current ...



[Dell PowerStore Installation and Service Guide for ...](#)

Installation power overview Install a new base enclosure Choose where to install the base enclosure Unpack the base enclosure Install the rails in the cabinet Install the base enclosure ...



[Figure 5-4 Power Adaptor Input and Output. Baicells Nova R9](#)

This installation guide provides instructions for the hardware installation of the BaiCells Nova R9 3.5GHz 1W base station. It covers topics like out-of-box audit, installation preparation, base ...



Contact Us

For catalog requests, pricing, or partnerships, please visit:
<https://www.llsolarenergy.co.za>



Scan QR Code for More Information



<https://www.lsolarenergy.co.za>