

How to read the current flow of the battery cabinet





Overview

To measure the current flowing through a battery, you should connect your meter from the battery's positive terminal to the negative terminal (eg. when measuring current in the wire between 'ground' and the battery negative, the meter's positive lead would be connected to 'ground' and the negative lead to the battery negative). How does a battery monitor work?

The battery monitor continuously measures the current flow in and out of the battery. Integration of this current over time, if it was a fixed current, boils down to multiplying current and time and gives the net amount of Ah added or removed. For example, a discharge current of 10A for 2 hours will take $10 \times 2 = 20\text{Ah}$ from the battery.

Can charge flow out of a battery?

No charge can flow out of a battery unless there is a conducting material connected between its terminals. A flow of charge can cause a small light bulb to glow. In this unit, you are going to explore how charge originating in a battery flows in wires and bulbs.

What does a positive current mean on a battery monitor?

This is the current needed for DC loads. A positive current means that current is going into the battery. This is current coming from charge sources. Keep in mind that the battery monitor will always indicate the total battery current, being the current traveling into the battery minus the current traveling out of the battery.

How does a battery meter work?

Figure 3-17: Meters connected to measure the current through the battery and the current through bulb D and the voltage of the battery when the switch is opened and closed. (a) Collect data while closing and opening the switch as before. Measure the currents through the battery and through bulb D.



How to read the current flow of the battery cabinet

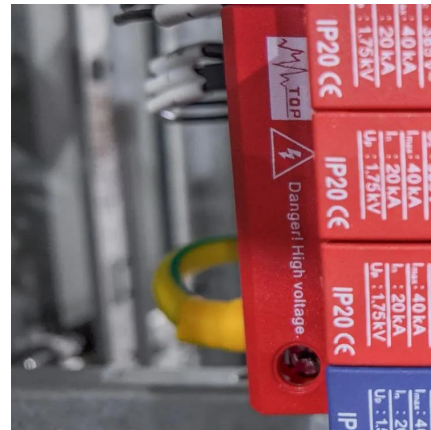


[How to Read Car Battery Charger Amp Meter: ...](#)

Apr 15, 2025 · Introduction: Understanding the readings on a car battery charger's amp meter is crucial for effectively and safely charging a vehicle's battery. The amp meter provides valuable ...

[Current flow in batteries?](#)

Apr 29, 2010 · I am reading a basic electronics book: "There are no Electrons: Electronics for Earthlings" and I came across a clever passage about the fact that you need a closed circuit in ...



[How to Install and Set Up a Battery Storage Cabinet at Home](#)

Apr 19, 2025 · Discover the components and benefits of battery storage cabinet systems, including lithium-ion advantages, placement considerations, ventilation needs, and cost ...



[Current flowing inside battery/voltage source](#)

May 23, 2020 · Current is the flow of charges (many say electrons). Do these charges flow just between the terminals of the source/battery (terminal to terminal) ? Or Do these charges flow



...



UNIT 102-3: BATTERIES, BULBS, AND CURRENT FLOW*

Sep 27, 2011 · A flow of charge can cause a small light bulb to glow. In this unit, you are going to explore how charge originating in a battery flows in wires and bulbs. You will be asked to ...



Currently Questioning the Accuracy of Your Battery ...

Jul 14, 2023 · Most battery-gauging algorithms use the accumulated, integrated charge that flows into or out of the battery in their computations. This accumulated charge is calculated by ...



How to Measure Current of a Battery Using Multimeter? A ...

Jun 23, 2025 · Understanding Battery Current and its Measurement What is Battery Current? Battery current, measured in amperes (A) or milliamperes (mA), represents the rate of electron ...



[How to read the current flow of the battery cabinet](#)

Where does current go in a battery? The current starts from the positive (+ve) terminal of the battery and exits through the negative (-ve) terminal. It flows into a 100mA load when it is on, ...



[Understanding Battery Current: How It Works, Measurement ...](#)

Mar 29, 2025 · Understanding battery current is important to optimize battery performance, ensure safe operation, and prevent damage from improper use. If you want to extend the life of your ...



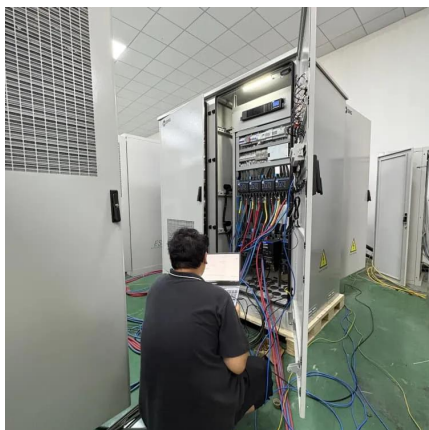
[UBC80 Battery Cabinet Installation, Operation.](#)

Feb 3, 2025 · Review the battery system schematic that is located attached to the inside of a cabinet door to determine the number of batteries that need to be installed in the cabinet, the ...



[Simplify Voltage and Current Measurement in Battery ...](#)

Dec 23, 2023 · To charge the battery, the buck converter is enabled while the first-stage voltage Op Amps and current-sense INA are used to measure battery voltage and charging current of ...





Contact Us

For catalog requests, pricing, or partnerships, please visit:
<https://www.llsolarenergy.co.za>

Scan QR Code for More Information



<https://www.llsolarenergy.co.za>