

How to set up the wind power supply for base stations





Overview

How do you maintain a wind energy system?

After installation, maintaining your wind energy system is crucial for its longevity: Regular Inspections: Inspect the tower, blades, electrical connections, and any moving parts regularly for wear or damage. Lubrication: Follow manufacturer's guidelines for lubricating moving parts at recommended intervals.

Why should you start a wind energy system?

Setting up a wind energy system can be a rewarding venture that not only benefits individual users but also contributes positively toward sustainable development goals globally.

How do you plan a wind turbine installation?

With a turbine selected, it's time to plan for installation. Wind turbines require stable foundations to withstand high winds and vibration: Site Preparation: Clear the site where the turbine will be installed, ensuring it's level and free from debris.

How is wind energy generated?

Wind energy is generated through the conversion of kinetic energy from wind into mechanical power, which can then be converted into electricity. The technology primarily involves wind turbines that capture the wind's energy.



How to set up the wind power supply for base stations



Huatong Yuanhang's wind-solar complementary system for power supply ...

Jun 13, 2024 · Based on the complementarity of wind energy and solar energy, the base station wind-solar complementary power supply system has the advantages of stable power supply, ...

[Optimal sizing of photovoltaic-wind-diesel-battery power supply ...](#)

Mar 1, 2022 · The paper proposes a novel planning approach for optimal sizing of standalone photovoltaic-wind-diesel-battery power supply for mobile telephony base stations. The ...



[Solar-Wind Hybrid Power for Base Stations: Why It's ...](#)

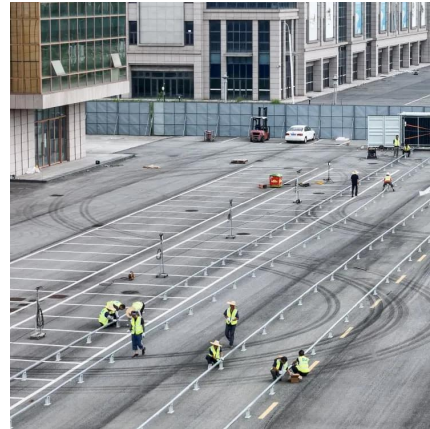
Oct 31, 2025 · For instance, in a certain base station in Tibet, pure solar energy requires 200kWh of battery, while wind-solar hybrid power only needs 120kWh of battery. As an important cost ...

[A Beginner's Guide to Setting Up Wind Energy Systems](#)

The world is increasingly looking towards sustainable energy sources to combat climate change, reduce dependency on fossil fuels, and create a more resilient energy grid. Among



renewable ...



[Construction standard requirements for wind power stations ...](#)

How to make wind solar hybrid systems for telecom stations? At present, wind and solar hybrid power supply systems require higher requirements for base station power. To implement new ...



[High Stable Wind Solar Generator Power Supply System for Mobile Base](#)

Apr 4, 2007 · A. System introduction The new energy communication base station supply system is mainly used for those small base station situated at remote area without grid. The main ...



[\(PDF\) Design of an off-grid hybrid PV/wind power system for ...](#)

Jan 1, 2017 · The study [4] has discussed the energy efficiency of telco base stations with renewable sources integration and the possibility of base stations switching off during low ...





Common problems with wind power supply for base ...

Dec 4, 2025 · Common problems with wind power supply for base stations Overview What are the challenges caused by integration of wind energy? This article aims to review the reported ...



Base station wind power supply principle

The paper proposes a novel planning approach for optimal sizing of standalone photovoltaic-wind-diesel-battery power supply for mobile telephony base stations. The approach is based on ...

Base station wind power supply function

Nov 1, 2025 · The paper proposes a novel planning approach for optimal sizing of standalone photovoltaic-wind-diesel-battery power supply for mobile telephony base stations. The ...



Contact Us

For catalog requests, pricing, or partnerships, please visit:
<https://www.llsolarenergy.co.za>



Scan QR Code for More Information



<https://www.llsoleenergy.co.za>