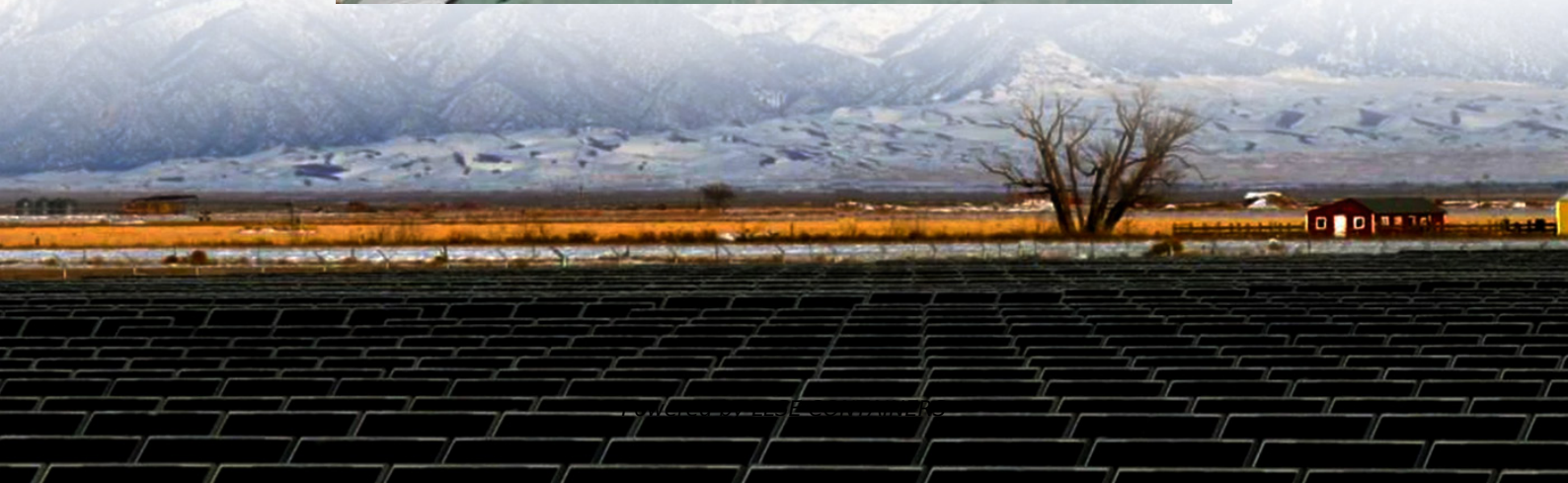


How to shut down the solar container communication station battery





Overview

How do I re-start my solar PV system?

Note there may be more than one. Pull down battery isolator fuse. Do this sharply and smoothly to avoid arcs. Your solar PV system should now be completely switched off. All lights and screen displays will be dead. Keep the system off for a minimum of five minutes. To re-start your system, follow this guide in reverse order.

What is an emergency shutdown on a solar system?

Emergency shutdown will provide a simple method to de-energize solar system easily to ensure a safe condition on the roof of a building during a fire, error or maintenance of the system. Note there may be more than one. Pull down battery isolator fuse. Do this sharply and smoothly to avoid arcs.

What is a solar disconnect switch?

A solar disconnect switch is a critical safety component that allows you to safely shut off power flow in your solar energy system. Whether you're a homeowner, installer, or system designer, understanding these essential devices can mean the difference between a safe, code-compliant installation and a potentially dangerous situation.

How do you turn off a solar inverter?

Turn off the AC switch between the inverter and the power grid. Turn off the DC switch at the bottom of the inverter. (Optional) Install the locking screw for the DC switch. Turn off the DC switch between the inverter and PV strings. (Optional) Turn off the battery switch between the inverter and batteries.



How to shut down the solar container communication station batter

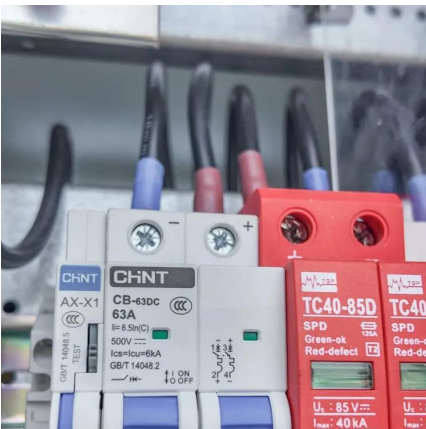


[Solar Disconnect Switch Guide: Types, Installation & Safety ...](#)

Aug 14, 2025 · A solar disconnect switch is a critical safety component that allows you to safely shut off power flow in your solar energy system. Whether you're a homeowner, installer, or ...

[Correct shutdown procedure](#)

Apr 23, 2022 · Correct shutdown procedure Has my solar system fitted a month now all working great. The company that fitted it is yet to send me the handover booklet, I think they have ...



[Commercial use of solar container batteries for ...](#)

Uninterrupted power supply for photovoltaic 5g communication base stations Base station operators deploy a large number of distributed photovoltaics to solve the problems of high ...

[Shutdown and Isolation Procedure](#)

Mar 30, 2023 · ADDITIONAL STEP FOR OFF GRID SYSTEMS: Pull down battery isolator fuse. Do this sharply and smoothly to avoid arcs. Your solar PV system should now be completely ...



[Technical Proposal of 10MW-20.064MWh Battery Energy ...](#)

Mar 3, 2025 · Note2: System Auxiliary Consumption Auxiliary power for battery containers and PCS-transformer containers is suggested to be supplied by external power source. o Auxiliary ...



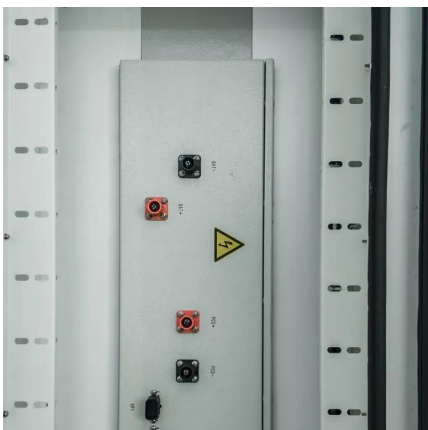
[How to Disconnect Battery from Solar Panel: A Step-by-Step ...](#)

Dec 11, 2024 · Learn how to safely disconnect your solar panel battery with our comprehensive guide. We outline essential safety precautions, necessary tools, and a step-by-step process to ...



[Can I run power to a shipping container? Off-Grid Solar ...](#)

May 9, 2025 · A solar-powered container can run lighting, sound systems, medical equipment or communications gear without waiting for grid hookups. Off-grid living and clinics: Even homes ...





Shutdown Procedure for PV / charge controller / Inverter / Battery

Feb 23, 2021 · When reconnecting the inverter to the battery, first pre-charge the inverter capacitors. For the solar charger, make sure you first connect it to the battery and only then ...



How to manually shut down the Solar PV System?

Oct 11, 2025 · That needs to be done every time you want to do maintenance to the battery bank, or if you want to completely shut down the system. Turning off the DC breaker from the ...

Contact Us

For catalog requests, pricing, or partnerships, please visit:
<https://www.llsolarenergy.co.za>

Scan QR Code for More Information



<https://www.lsolarenergy.co.za>