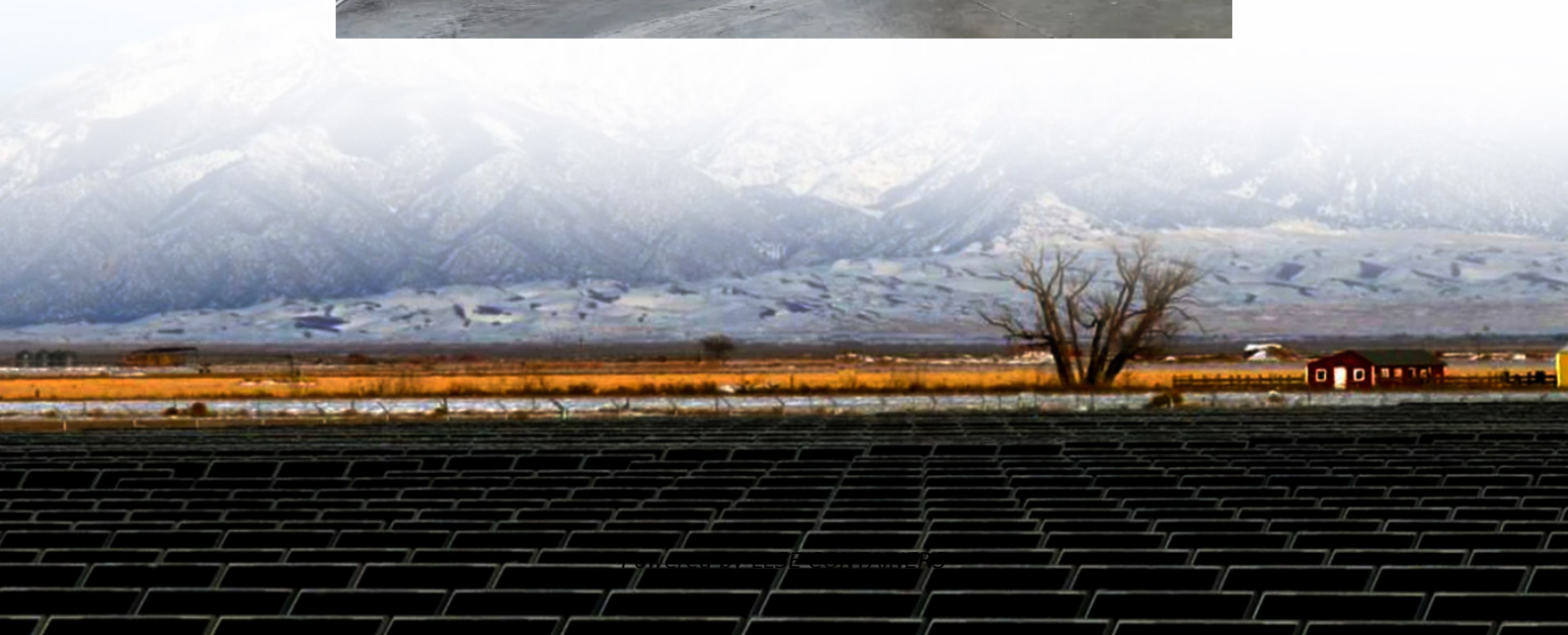


Huawei inverter anti-DC arc





Overview

Why do Huawei inverters have arc detection?

If PV modules or cables are incorrectly connected or damaged, electric arcs may be generated, which may cause fire. Huawei inverters provide arc detection to ensure the safety of users' lives and property. This function is enabled by default.

Do Huawei inverters meet UL 1699b-2018 arc fault circuit protection requirements?

To verify the performance and availability of arc-fault circuit interrupter (AFCI), Huawei entrusted the China General Certification Center (CGC) to complete comprehensive evaluation, with its results showing that Huawei inverters with the AFCI function meet the requirements of UL 1699B-2018 "Safety Standard for PV DC Arc Fault Circuit Protection.".

Which inverter does Huawei use for AFCI?

Huawei's AFCI solution is represented by the SUN2000 series inverter, which mainly adopts AFCI integrated with inverter technology and does not need to install additional AFD and AFI devices, as shown in Figure 2.8.

How do I disable AFCI test on Huawei inverters?

Huawei inverters provide arc detection to ensure the safety of users' lives and property. This function is enabled by default. To disable this function, go to the Device commissioning screen from the FusionSolar app, choose Settings > Feature parameters, and disable AFCI test.



Huawei inverter anti-DC arc



[Huawei Advanced Arc Detection , Solargain Solar Blog](#)

Nov 19, 2020 · The Huawei AI powered Arc Fault Circuit Interrupter (AFCI) technology entirely negates this issue by cutting off the electricity supply to your solar PV system and shutting ...

SolarTech Power Solutions

5 days ago · However, Huawei has successfully developed an intelligent, precise, and rapid solution by leveraging a neural network algorithm. This algorithm enables accurate detection ...



[Arc Fault Circuit Interrupter \(AFCI\) for PV](#)

To verify the performance and availability of arc-fault circuit interrupter (AFCI), Huawei entrusted the China General Certification Center (CGC) to complete comprehensive evaluation, with its ...

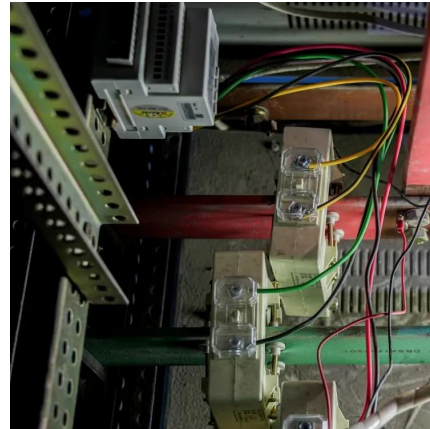


[Huawei Photovoltaic Inverter White Paper](#)

Thanks to systematic safety solution design, Huawei inverters can effectively reduce equipment faults on the DC side, prevent electric arc hazards and fires, reduce asset losses, and



ensure ...



[Huawei, Mazer and UFSM test AFCI and prove its ...](#)

Jun 9, 2025 · Huawei, in partnership with the Federal University of Santa Maria (UFSM) and Mazer Solar, has successfully completed a proof of concept to validate the performance of the ...



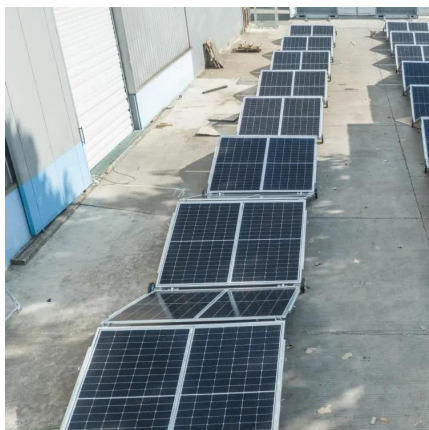
[Huawei SUN2000 -- Installation & Fault Codes \(Professional ...](#)

Oct 1, 2025 · The Huawei SUN2000 series is a high-power commercial/grid-tied PV inverter family designed for utility and commercial PV plants. This guide focuses on practical, installer-level ...



[Dc arc detection and interruption in photovoltaic power ...](#)

Jul 6, 2023 · This project focuses on the design and fabrication of a reliable and safe direct current (DC) arc generator for DC arc fault testing in photovoltaic (PV) systems. The project aims to ...





DC ARC DETECTION AND INTERRUPTION IN

Jul 6, 2023 · The project aims to evaluate the effectiveness of the DC arc fault protection features in the Huawei Solar Inverter SUN2000-2KTL-L1 through various tests including arc fault circuit ...



Contact Us

For catalog requests, pricing, or partnerships, please visit:
<https://www.llsolarenergy.co.za>

Scan QR Code for More Information



<https://www.llsolarenergy.co.za>