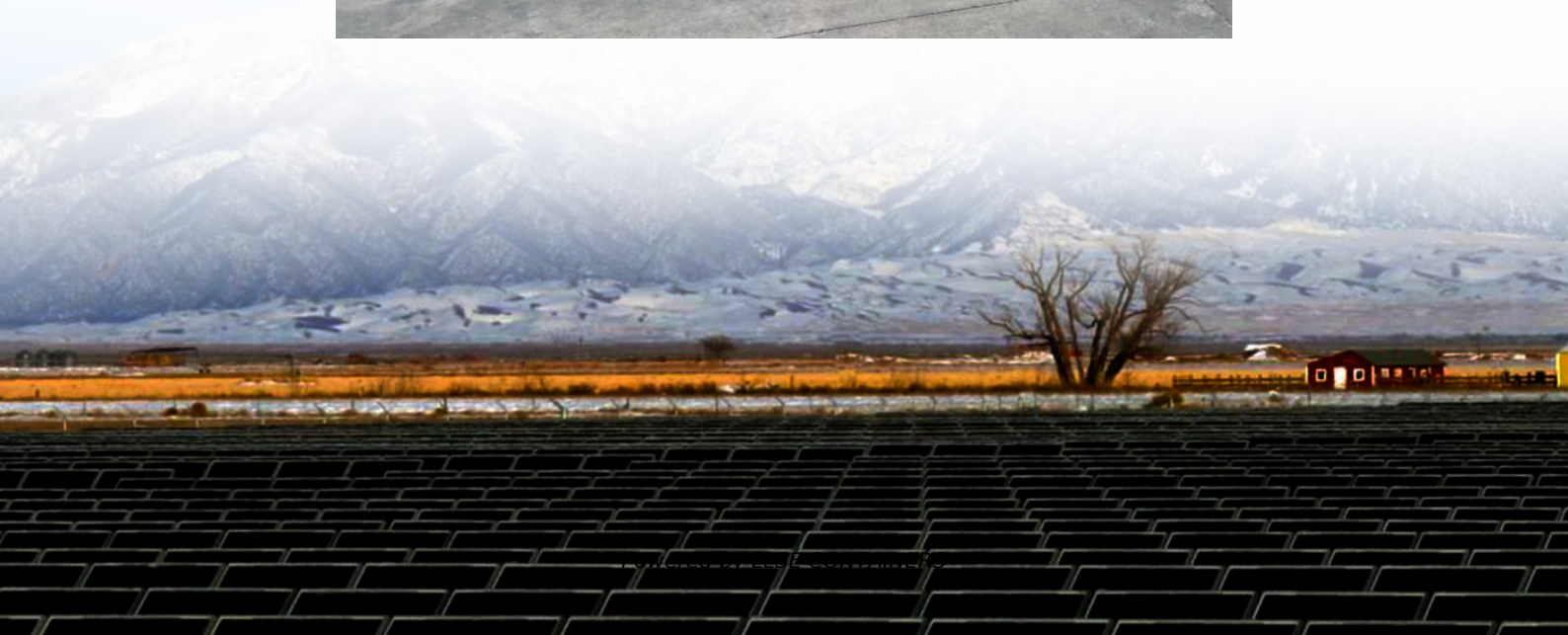


Inverter 48 to 220





Overview

What is a 48 watt inverter?

48V 2000W power inverter with universal socket and USB port, modified sine wave or pure sine wave output waveform are available. Option for 110V/120V or 220V/230V/240V AC 50Hz/60Hz, suitable DC to AC inverter for home use to charge TV, laptop, fans, lights and other appliances. Storage temperature of this 2000 watt inverter between -30 °C to +70 °C.

What is the working temperature of a 48V 5000W inverter?

Working temperature of this 48V 5000W inverter between -10 °C to 50 °C. A 48V power inverter is a device used to convert direct current (DC) electrical power from a 48-volt battery or DC power source into alternating current (AC) power. In terms of functionality, a 48V power inverter typically consists of several key components.

What is a 220V power inverter?

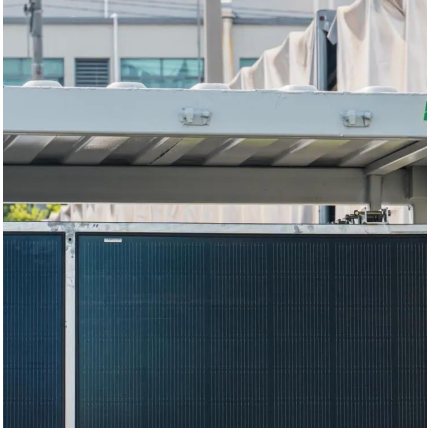
A 220 volt power inverter converts direct current to conventional alternating current. It can be used to run electronic equipment when there is no normal power supply. Sam Stores stocks a wide range of power inverters to match your needs.

How does a 48V power inverter work?

In terms of functionality, a 48V power inverter typically consists of several key components. These include a DC input, an inverter circuit that converts DC to AC power, control electronics for regulating the output voltage and frequency, and output sockets or terminals to connect AC-powered devices.



Inverter 48 to 220



[Best 48VDC to 220VAC Inverters for Reliable Off-Grid Power ...](#)

Aug 23, 2025 · Choosing the right 48VDC to 220VAC inverter is crucial for efficient energy conversion in solar and off-grid systems. This article reviews top models with varying ...

[How to Choose the Best Inverter 48v 220v for Your Power ...](#)

Dec 8, 2025 · About Inverter 48v 220v An inverter 48v 220v converts direct current (DC) from a 48-volt battery bank into alternating current (AC) at 220 volts, which is standard household ...



[Inverter 5000W 48V DC to 220V AC](#)

This inverter operates with a 48V DC voltage compatible with SOLISE lithium batteries. It transforms 48V DC (direct current) into 220V AC (alternating current).

[Amazon : 48v To 220v Inverter](#)

10200W Solar Inverter, 48V DC to 220-230V AC, Off Grid Pure Sine Wave Solar Inverter with 160A MPPT Charge Controller, Max PV Array 5400W, for Home, RV, for 48V Lead Acid & ...



Inverter 48V 220V

The inverter 48v 220v is specifically designed to convert the DC power stored in 48-volt battery systems into usable 220-volt AC power, which is the standard voltage for most household ...



48v dc to 230v 220v ac inverters 240v

Jun 3, 2025 · Xindun power factory sales inverter 48v to 220v, 48v to 240v, 48vdc to 230vac. AC inverters high frequency design, high power density, ...



Inverter 48 to 220

A 48 to 220 inverter converts DC power from a 48V battery system into 220V AC power, making it ideal for industrial, commercial, and off-grid applications. These inverters are essential for ...





[Inverter 5000W 48V DC to 220V AC](#)

This inverter operates with a 48V DC voltage compatible with SOLISE lithium batteries. It transforms 48V DC (direct current) into 220V AC (alternating ...

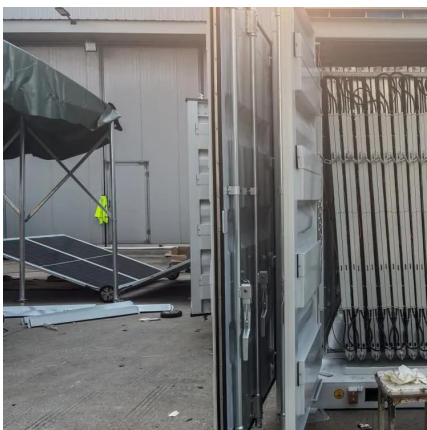


[China 48/220 Inverter, 48/220 Inverter Wholesale, ...](#)

The 48/220 Inverter is a premium choice in the Solar Inverter category. Identifying a reliable manufacturer for solar inverters involves reviewing product range, manufacturing processes, ...

[Best 48V DC to 220VAC Inverters for Reliable Off-Grid and ...](#)

Sep 7, 2025 · Choosing the right 48V DC to 220VAC inverter is essential for powering home appliances, solar off-grid systems, and recreational vehicles efficiently. These inverters convert ...



[48v dc to 230v 220v ac inverters 240v](#)

Jun 3, 2025 · Xindun power factory sales inverter 48v to 220v, 48v to 240v, 48vdc to 230vac. AC inverters high frequency design, high power density, high efficiency, low no-load loss.



[48v Inverter, 48v DC to 120v/220v AC Power Inverter , inverter...](#)

Powerful 3000 watt 48 volt inverter for home use. High conversion efficiency from DC battery power to AC household power. Adopts with intelligent protection chip, to make this 3000W ...



[48v Inverter, 48v DC to 120v/220v AC Power ...](#)

Powerful 3000 watt 48 volt inverter for home use. High conversion efficiency from DC battery power to AC household power. Adopts with intelligent ...

Contact Us

For catalog requests, pricing, or partnerships, please visit:
<https://www.llsolarenergy.co.za>

Scan QR Code for More Information



<https://www.llsoleenergy.co.za>