

# Inverter DC Marking





## Overview

---

Do I need a warning label on an inverter?

Figure 1. Warning label on inverter. Certain labels can be required on raceways and enclosures while other labels will be needed at DC disconnects that specify values like the maximum system voltage and system current. Here is a quick summary of PV system marking and labeling requirements.

How do I know if my inverter is rated AC?

PV Disconnect Section 690.54 requires a label at the point where the PV system interconnects to other sources such as the premises wiring system. The label must have the rated ac output current and the nominal operating ac voltage. This rated ac output current can be found on the inverter nameplate.

What requirements do inverters meet?

Depending on the applicability of the inverter, unique national and regional standards must be fulfilled, including: For the CE, UKCA, UKNI marking processes, the inverter must fulfil the following requirements: Safety requirements for Marking and self-declaration EMC requirements for Marking and self-declaration.

What are PV system marking & labeling requirements?

Here is a quick summary of PV system marking and labeling requirements. Section 690.5 covers the ground fault detection/interruption for the PV system and requires a warning label on the utility-interactive inverter or near the ground-fault indicator at a visible location. Most often, these labels are applied on the inverter by the manufacturer.



## Inverter DC Marking



### [IEC and European Inverter Standards, Baltimore High ...](#)

Dec 12, 2005 · Redundancy and one-fault tolerance requirements  
Anti-Islanding requirements  
DC current injection requirements  
For transformerless inverters: Requirements for a RCMU ...

### [PV System: Marking and Labeling](#)

Jul 6, 2015 · Figure 1. Warning label on inverter. Certain labels can be required on raceways and enclosures while other labels will be needed at DC disconnects that specify values like the ...



### [PV Inverter and BESS Converters Certification](#)

Jan 1, 2021 · Demonstrate market readiness with UL Solutions' inverter and converter certification and evaluation services for compliance with a wide range of local, national and international ...

### [Marking of electronic components, SMD Codes DC, DC \\*, DC\\*, DC\\*\\*, DC](#)

Marking of electronic components, SMD Codes  
DC, DC \*, DC\*, DC\*\*, DC-, DC-\*\*\*, DC15, DC=,  
DC=\*\*\*, DCP, DCQ, DCR, DCR\*\*, Dc. Datasheets  
2SD1767, AP2311SN, BCW67C, ...



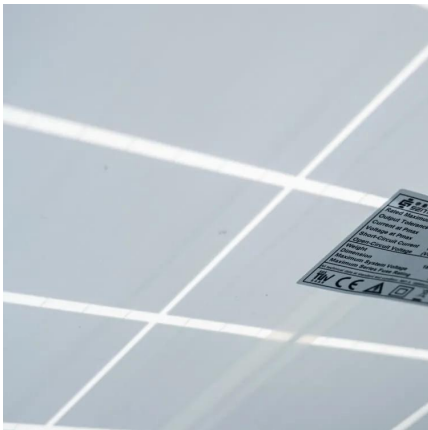
### [AC and DC Symbols \(Electric Current Symbols\) - Asutpp](#)

The standardized symbols used to denote alternating current (AC) and direct current (DC) are an essential part of that communication. In this article, I will provide a handy reference table ...



### **PV Labeling Requirements**

Jun 10, 2024 · Must be reflective per NEC 630.31 & IFC 605.11.1.2 E. INVERTER -- The transformer converts the DC voltage into AC Voltage that can be sold back to the utility or ...



### [IEC and European Inverter Standards, Baltimore High ...](#)

Jul 6, 2015 · Figure 1. Warning label on inverter. Certain labels can be required on raceways and enclosures while other labels will be needed at DC disconnects that specify values like the ...





### [Labeling and Marking , AE 868: Commercial Solar Electric ...](#)

This helps in identifying energized electrical lines that connect the solar modules to the inverter to prevent cutting these wires when venting for smoke removal. Materials used for marking ...



## Contact Us

---

For catalog requests, pricing, or partnerships, please visit:  
<https://www.lsolarenergy.co.za>

### Scan QR Code for More Information



<https://www.lsolarenergy.co.za>