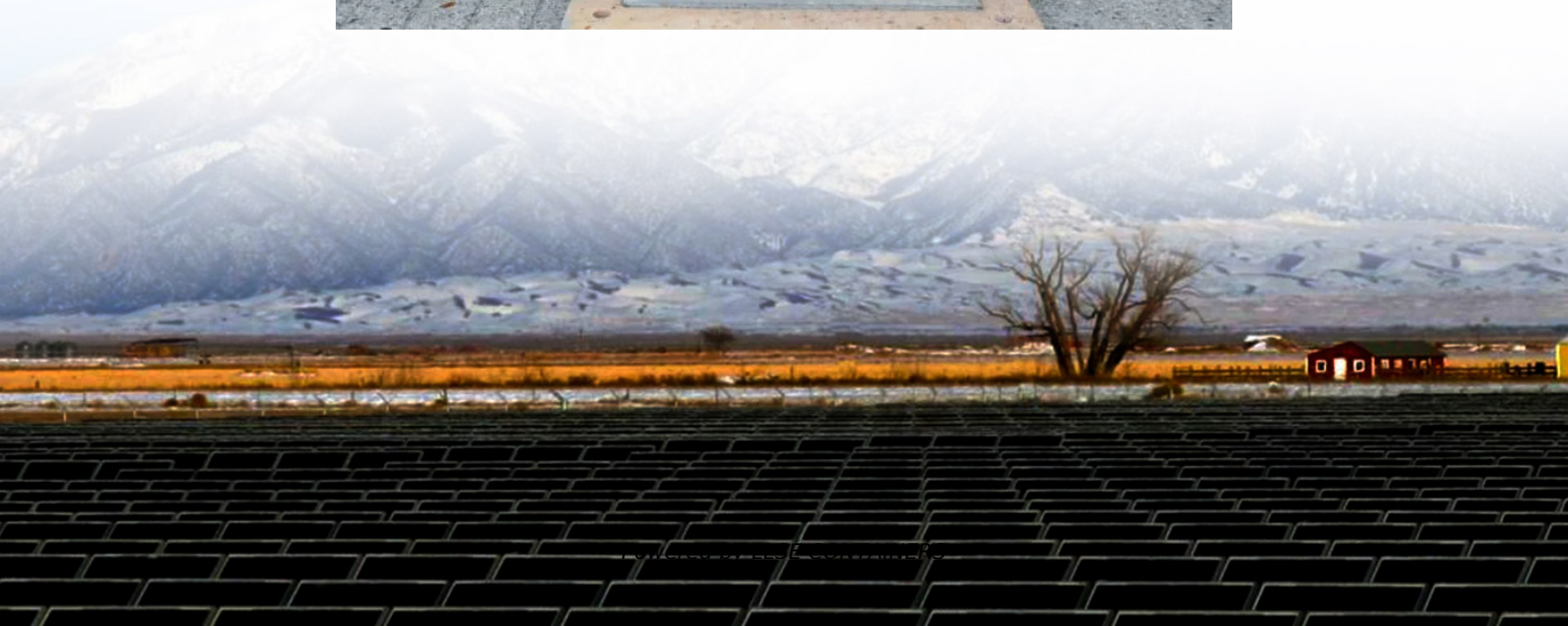


Inverter affects the battery





Overview

Why do Inverter Batteries weaken?

An inverter battery weakens due to deep discharges below recommended levels, overcharging, high operating temperatures, poor maintenance (especially for lead-acid batteries), and incorrect installation. Regular maintenance, proper charging, and avoiding extreme conditions help prolong battery life.

What happens if a power inverter goes out?

The inverter remains in battery mode until the grid supply is restored. Once the mains return, it automatically reverts to charging mode to replenish the battery in inverter. During prolonged outages, efficient power usage becomes essential to prevent rapid battery drain.

Do Inverter Batteries really work?

An inverter battery is the silent powerhouse that keeps your home running when the grid goes down. However, like any power source, its effectiveness is only as good as the way it's used and maintained.

Do Inverter Batteries last a long time?

With smart usage and a bit of care, your inverter battery can power through outages reliably year after year. Choose inverter batteries from Tata Green Batteries that come with tubular technology and are meant to provide an uninterrupted power supply. Learn common mistakes that reduce inverter battery efficiency and lifespan.



Inverter affects the battery

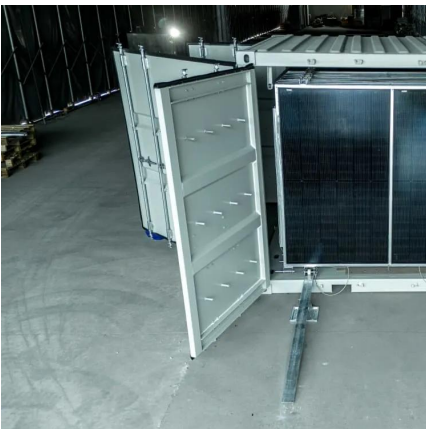


[Will a Power Inverter Drain My Battery? Here's the Answer!](#)

Apr 16, 2025 · This post shows if a power inverter will drain your car battery, how to prevent it, and recommends the best inverter, Topbull, to offer the best protection!

[Will a Car Power Inverter Drain the Battery?](#)

Jan 1, 2025 · Device Power Consumption: The amount of power consumed by the device plugged into the inverter directly affects battery drain. For instance, a small device like a phone charger ...



[Understanding How Power Inverters Impact Car Batteries: ...](#)

Jul 26, 2024 · Discover the truth about power inverters and car batteries! Learn that inverters do not drain car batteries continuously, but usage depends on connected devices. Unveil vital tips ...

[Why Corrosion Is a Major Concern for Inverter Batteries and ...](#)

Feb 24, 2025 · Conclusion Corrosion is one of the most common and destructive issues that affect the performance and lifespan of inverter batteries. However, with the right care and ...



[Can An Inverter Damage A Battery?](#)

Jul 10, 2023 · Many people wonder whether an inverter can damage a battery. In this article, we will explore the relationship between inverters and batteries and discuss the potential impacts ...

[Can a Car Inverter Damage My Car Battery?](#)

Apr 29, 2025 · Yes, a car inverter can potentially damage your car battery if used improperly or for prolonged periods. While car inverters are useful for powering electronics like laptops and ...



[Ultimate Guide to Battery in Inverter: Choose & Maintain Right](#)

Jul 7, 2025 · Discover how to choose, maintain, and maximize your battery in inverter for reliable backup power. Expert tips on inverter batteries, lifespan, and safety included!



[Common Mistakes That Reduce Inverter Battery Life & How ...](#)

Learn common mistakes that reduce inverter battery efficiency and lifespan. Get expert tips to avoid overcharging, overloading, and poor maintenance for long battery life.



[8 Key Factors That Affect the Life of Your Inverter Battery](#)

Oct 28, 2025 · Discover what impacts the life of an inverter battery and how to extend its lifespan. Learn maintenance tips, battery types, and care practices for long-lasting performance.

[Can an inverter destroy a battery?](#)

May 20, 2023 · This article explores whether an inverter can destroy a battery and identifies factors that can affect the health of a battery when using an inverter. The article discusses the ...



Contact Us

For catalog requests, pricing, or partnerships, please visit:
<https://www.llsolarenergy.co.za>



Scan QR Code for More Information



<https://www.lsolarenergy.co.za>