

Inverter shutdown voltage





Overview

When does my inverter shut down automatically?

The inverter should shut down automatically as soon as it reaches 253 V. As an installer is it wise to look at the settings in order to prevent the inverter to be set-up incorrectly. For example a wrong country setting. We advise to keep a voltage drop of a maximum of 1%. Is your installation connected to single-phase ?

.

Can inverter failure cause a shutdown?

Inverter failure can lead to a shutdown, but most failures can be fixed by the installer or user with assistance available from the Aftersales team if needed. High voltage in the inverter or the residence can trigger automatic shutdowns, and proper setup of shut-down parameters and voltage drop is important to prevent this.

Why does a solar inverter shut down automatically?

Therefore, the inverter shuts down automatically for safety reasons. This is due to the following: the electricity generated by the solar panels is temporarily stored in the inverter. The inverter is constantly measuring the frequency and the voltage from the grid and adjusts the generated power to this.

What happens if the inverter shuts down due to a low battery?

Once the inverter has shut down due to a low battery (regardless of the mode): The inverter will restart again once the battery voltage has increased above the "low battery restart and alarm" level. The inverter will clear the low battery alarm once it detects the battery is being charged. This is the "charge detect" voltage.



Inverter shutdown voltage



[Tesla Solar Inverter and Solar Shutdown Device Datasheet](#)

Oct 25, 2024 · Solar Shutdown Device Technical Specifications -- The Solar Shutdown Device is a Mid-Circuit Interrupter (MCI) and is part of the PV system rapid shutdown (RSD) function in ...

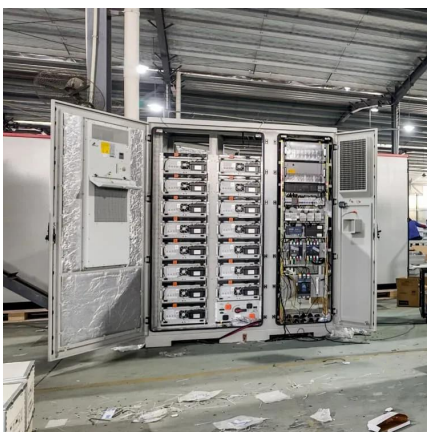
9. Inverter Settings

Sep 17, 2024 · To set the voltage at which the inverter triggers a warning light and signal before shutdown. - DC input low pre-alarm With this setting one can determine the level at which the ...



[Deye 5kw hybrid inverter Battery Settings \(LOW BATT/SHUTDOWN...](#)

Nov 9, 2022 · 2. SHUT DOWN Battery voltage or % at which the inverter will shut down to protect the battery from an over discharge situation. 3. RESTART Battery voltage or % at which AC ...

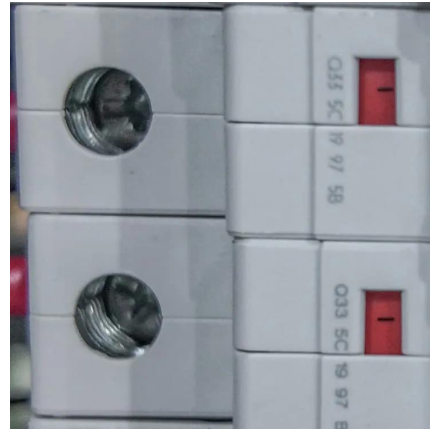


[Why Does My Solar Inverter Shut Down, Trip or Reduce Power?](#)

To ensure your inverter operates optimally, it's crucial to check and correctly set up the shutdown parameters, especially in the case of a high voltage inverter. Incorrect configuration can



lead ...



[Why your solar inverter shuts down or reduces power?](#)

4 days ago · However, the 4777 standard states that the maximum 10-minute AC over-voltage of an inverter is 258 Volts, (with some grid operators mandating 255 Volts). At this point the ...

[What Triggers a Solar Inverter LV Shutdown Alert and How ...](#)

Apr 11, 2025 · How Does a Solar Inverter LV Shutdown Mechanism Work? Solar inverters monitor grid voltage continuously. If voltage drops below or surges above preset thresholds (e.g., 80 ...



[Will My Inverter Restart After a Low Battery Shutdown?](#)

When the battery voltage drops below a certain threshold, typically to prevent deep discharge and potential damage to the battery, the inverter will shut down to protect the battery. In such ...



Why does an inverter shut down?

Are the shut-down parameters of the inverter set-up the correct way? The inverter should shut down automatically as soon as it reaches 253 V. As an installer is it wise to look at the settings ...



Contact Us

For catalog requests, pricing, or partnerships, please visit:
<https://www.llsolarenergy.co.za>

Scan QR Code for More Information



<https://www.llsolarenergy.co.za>