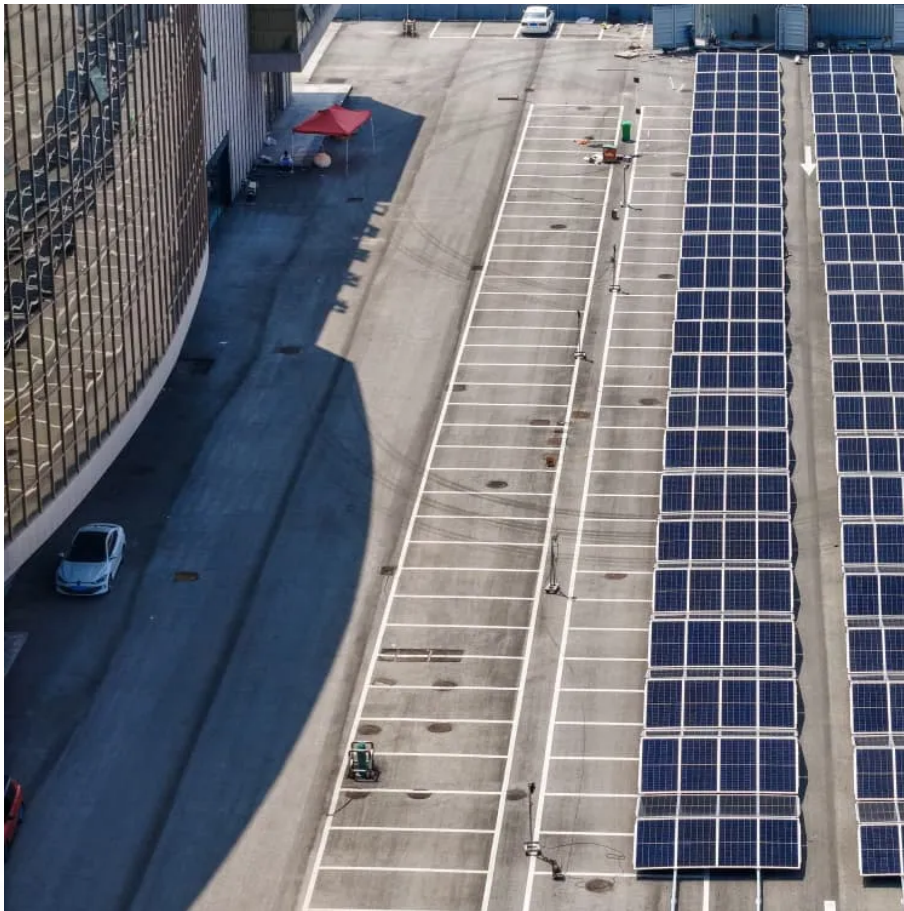


Inverter to DC 220V





Overview

What is a 12V DC to 220V AC converter?

A 12V DC to 220 V AC converter can also be designed using simple transistors. It can be used to power lamps up to 35W but can be made to drive more powerful loads by adding more MOSFETS. The inverter implemented in this circuit is a square wave inverter and works with devices that do not require pure sine wave AC.

What is a DC to AC inverter circuit?

A DC to AC inverter circuit transforms 12V DC input into 220V AC output, enabling you to power standard household devices from battery sources. This comprehensive guide will walk you through the theory, components, design considerations, and step-by-step construction of a reliable 12V to 220V inverter circuit.

What is a simple 12V to 220V inverter?

Simple 12V to 220V inverters find widespread use in automotive applications, solar power systems, emergency backup power, and portable power solutions. Understanding load characteristics helps determine appropriate inverter specifications and ensures reliable operation.

What is a 220V alternating square wave inverter?

The transformer combines both the inverting signals to generate a 220V alternating square wave output. By using a 24V battery, loads up to 85W can be powered, but the design is inefficient. In order to increase the capacity of the inverter, the number of MOSFETS must be increased.



Inverter to DC 220V



Pure Sine Wave Inverter 12V to 220V 3000W-6000W Peak Power Converter DC

Buy Pure Sine Wave Inverter 12V to 220V 3000W-6000W Peak Power Converter DC to AC with LCD Display, for Car Boat Truck RV Solar Power,5000W-12Vto220V: Power Inverters - ...

Push-Pull Inverter 12V to 220V

In this project, we design and construct a 12V to 220V push-pull inverter. This circuit is specifically designed to convert 12V DC into 220V DC, making it suitable for powering devices with AC ...



12V-220V/230V Battery Inverter , 3000 Watt Pure Sine Wave

Shop Leaptrend 12V DC to 220V/230V/240V AC 3000W Pure Sine Wave Battery Inverter designed for RVs, Trucks, Outdoor, Off-Road, Marine, Home Household Electronics including ...

12V-220V/230V Battery Inverter , 3000 Watt Pure Sine ...

Shop Leaptrend 12V DC to 220V/230V/240V AC 3000W Pure Sine Wave Battery Inverter designed for RVs, Trucks, Outdoor, Off-Road, Marine, Home Household Electronics including ...



[Complete Guide to Building a DC to AC Inverter Circuit: 12V to 220V](#)

2 days ago · A DC to AC inverter circuit transforms 12V DC input into 220V AC output, enabling you to power standard household devices from battery sources. This comprehensive guide will ...



[5000W DC 12V/24V/48V/60V/72V Pure Sine Wave Inverter Charger DC ...](#)

[Multiple Specifications Available]: This inverter converts 12V/24V/48V/60V/72V (optional) DC power to 110V-120V/220V-240V (optional) AC power. You can choose the inverter ...



[2200W Pure Sine Wave Power Inverter DC 12V To AC 220V ...](#)

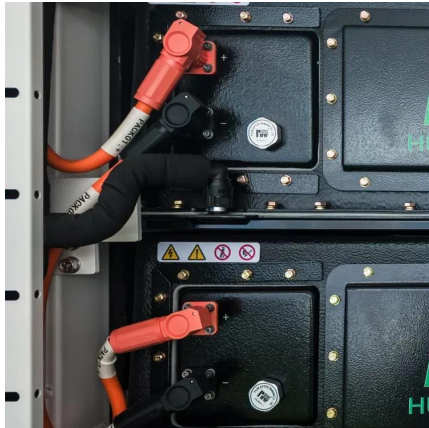
Nov 3, 2025 · 12V DC to 220V AC With 2600W Pure Sine Wave Power Inverter. For Car, RV, Solar and Any Kind of Household Appliances. Enjoy Free Shipping - Get Yours Now!





[Congsin 300W Modified Sine Wave Inverter , 12V DC to 220V ...](#)

The Congsin 300W Modified Sine Wave Inverter converts 12V DC to 220V AC with dual USB ports, universal plug, and battery clips, making it ideal for automotive, camping, and ...



[How to Choose the Best Inverter 24V to 220V for Your Power ...](#)

5 days ago · About Inverter 24V 220V An inverter 24V to 220V converts direct current (DC) from a 24-volt battery system into alternating current (AC) at 220 volts, making it suitable for running ...

Contact Us

For catalog requests, pricing, or partnerships, please visit:
<https://www.llsolarenergy.co.za>

Scan QR Code for More Information



<https://www.lsolarenergy.co.za>