

Inverter transformation 12v





Overview

What is a 12V inverter circuit diagram?

A 12V inverter circuit diagram is a schematic representation of an electronic circuit that converts a 12V DC (direct current) power supply into 220V AC (alternating current) power supply. In simpler terms, it allows you to power household appliances or devices that typically run on AC power using a 12V battery or other 12V power source.

How does a 12V inverter work?

In a 12V inverter, the first step is to convert the 12V DC power into a high-frequency AC waveform. This is done using a power oscillator or a switching circuit. The high-frequency AC waveform is then passed through a transformer to increase its voltage to 120V.

What is a 12V DC inverter?

12V DC Power Source: A stable and reliable 12V DC power source is required as the input for the inverter circuit. This can be a battery or an external power supply. **DC-DC Converter:** A DC-DC converter is used to step up the input voltage from 12V DC to a higher voltage level, typically around 300-400V DC.

What is a DC to AC inverter circuit?

A DC to AC inverter circuit transforms 12V DC input into 220V AC output, enabling you to power standard household devices from battery sources. This comprehensive guide will walk you through the theory, components, design considerations, and step-by-step construction of a reliable 12V to 220V inverter circuit.



Inverter transformation 12v



[12V DC to 220V AC Inverter Circuit & PCB](#)

Feb 2, 2025 · The Circuit Diagram shown above is the tested 12V DC to 220V AC Inverter Circuit. It uses 2 power IRFZ44 MOSFETs for driving the output power and the 4047 IC as an astable ...

[12 Volt to 220 Volt Inverter](#)

Apr 9, 2019 · Components Required IC CD4047 power MOSFET IRFZ44 = 2. 12-0-12V secondary transformer 1 amps Variable Resistor 22K? Resistors 100? / 10 watts = 2 capacitor 0.22μF 12 ...



[12V to 120V Inverter: How It Works & What You Need to Know](#)

Feb 17, 2025 · A 12V to 120V inverter can convert DC power (12V) into AC power (120V), making it compatible with household appliances. These inverters are widely used in off-grid solar ...



[12vdc To 120vac Inverter Circuit Diagram - Wiring Flow ...](#)

Jan 27, 2023 · A 12vdc to 120vac inverter circuit diagram is a step-by-step visual guide that explains how an inverter converts 12 volts of direct current to 120 volts of alternating current.



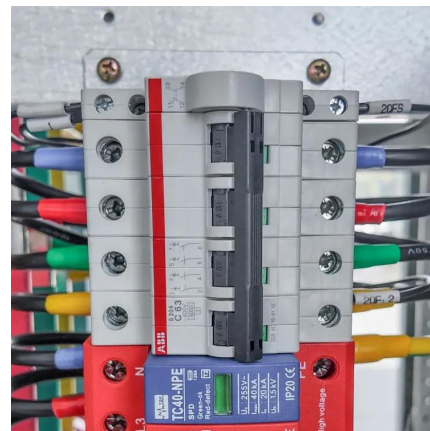
12 to 120 Volt Inverter

Aug 20, 2014 · 12 to 120 Volt Inverter An inverter is an electrical device that converts direct current (DC) to alternating current (AC); the converted AC can be at any required voltage and ...



[How to Build a 12v Inverter Circuit Diagram for Powering ...](#)

Find the circuit diagram for a 12v inverter and learn how it can convert direct current (DC) to alternating current (AC) for various applications. Understand the components and connections ...



[How To Make 12v DC to 220v AC Converter/Inverter Circuit ...](#)

Circuit Design Explanation12V DC to 220V AC Converter Circuit OperationApplications of 12V DC to 220V AC Converter CircuitLimitations When this device is powered using the 12V battery, the 555 timer connected in astable mode produces square wave signal of 50Hz frequency.When the output is at logic high level, diode D2 will conduct and the current will pass through diode D1, R3 to the base of transistor Q1.Thus transistor Q1 will be switched on. When



the output is at logic low level, diode D1 will co...
When this device is powered using the 12V battery, the 555 timer connected in astable mode produces square wave signal of 50Hz frequency. When the output is at logic high level, diode D2 will conduct and the current will pass through diode D1, R3 to the base of transistor Q1. Thus transistor Q1 will be switched on. When the output is at logic low level, diode D1 will conduct and current will flow via and D1 and R4 to the base of Q2, causing it to be switched on. This allows the DC voltage to be produced across the primary of the transformer at alternate intervals. The capacitor ensures that the frequency of the signal is at the required fundamental frequency. See more New content will be added above the current area of focus upon selection See more on electronics hub Instructables

12v DC to 220v AC Portable Inverter : 7 Steps

This article delves into the design and construction of a compact and portable 12V DC to 220V AC 50Hz inverter, highlighting its key features, ...

[Complete Guide to Building a DC to AC Inverter Circuit: 12V ...](#)

1 day ago · A DC to AC inverter circuit transforms 12V DC input into 220V AC output, enabling you to power standard household devices from battery sources. This comprehensive guide will ...



Contact Us

For catalog requests, pricing, or partnerships, please visit:
<https://www.llsolarenergy.co.za>



Scan QR Code for More Information



<https://www.llsoleenergy.co.za>