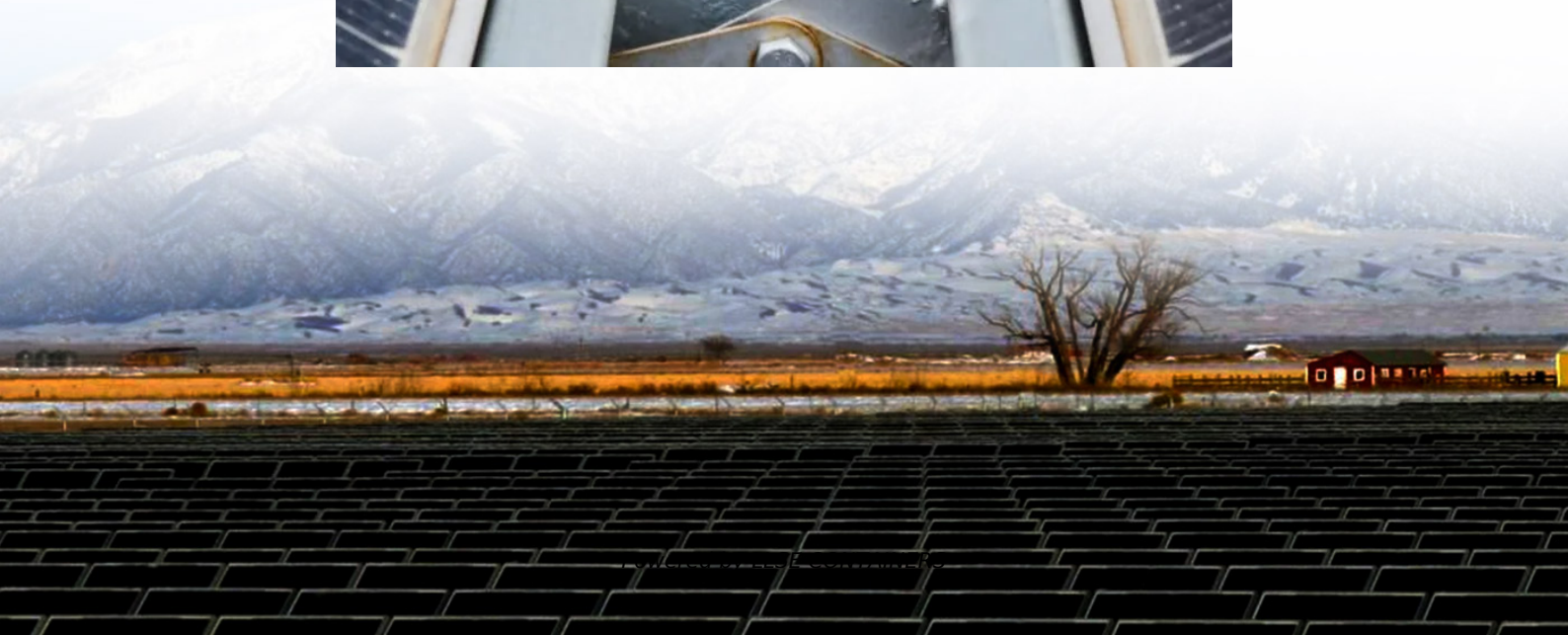


Is it normal for a 72v inverter to output 250 volts





Overview

What happens if a power inverter is over 250V?

The higher the amount of electricity you are trying to export, the greater the “voltage rise” between your inverter and the grid will be. If the voltage at your inverter goes above 250V, the inverter will enter volt-watt response and reduce its maximum power output accordingly.

What voltage does an inverter use?

In different countries, the applicable AC voltage is different, and most countries use 110v, 120v output inverter voltage. You can confirm on the search engine or see how much AC voltage the home appliance label uses. How can the quality of inverter output voltage be measured?

.

What is a 12V to 240V inverter?

A 12V to 240V inverter is a pivotal device designed to convert direct current (DC) power from a 12-volt battery into alternating current (AC) power with a nominal output of 240 volts. This conversion is vital for running household appliances, electronic devices, and other equipment that require standard AC power.

What is the maximum input voltage for a 12V inverter?

The maximum input voltage for an inverter is a critical specification that ensures the device operates within safe limits. For a 12V inverter, the maximum input inverter voltage is typically around 16VDC. This safety margin provides a buffer to accommodate fluctuations in the power source and protect the inverter from potential damage.



Is it normal for a 72v inverter to output 250 volts



[A comprehensive guide to inverter voltage](#)

Dec 18, 2024 · What is a 12VDC to 120VAC inverter? 12VDC to 120VAC Inverter is a common device that converts 12V DC power to AC power with a nominal output of 120V. 120 volts AC ...

[72V input inverter, 360VA industrial grade pure sine wave ...](#)

July 30, 2024 Heavy duty industrial grade pure sine wave DC/AC inverters, 48V or 72VDC input, 110VAC or 220VAC output, 360 watts, including waterproof styles The range of 72VDC input is ...



[Understanding inverter voltage](#)

Jan 10, 2024 · The inverter output inverter voltage is a critical aspect that must align with the standard alternating current (AC) voltage required by connected devices. The quality of the ...

[How many volts is suitable for solar inverter , NenPower](#)

Jul 31, 2024 · A mismatch in the voltage ratings between solar panels and the inverter can lead to decreased efficiency, resulting in energy losses. Inverters with high efficiency ratings,



often ...



[How To Read And Interpret An Inverter Specification](#)

4 days ago · Inverter specifications are technical information that describes an inverter's capabilities, characteristics, and limitations. They guide users in choosing an inverter that suits ...



[How Grid Voltage Affects Solar Production , Infinite Energy](#)

May 28, 2020 · If the voltage at your inverter goes above 250V, the inverter will enter volt-watt response and reduce its maximum power output accordingly. You are less likely to see this ...



[How many volts is normal for solar power to be output?](#)

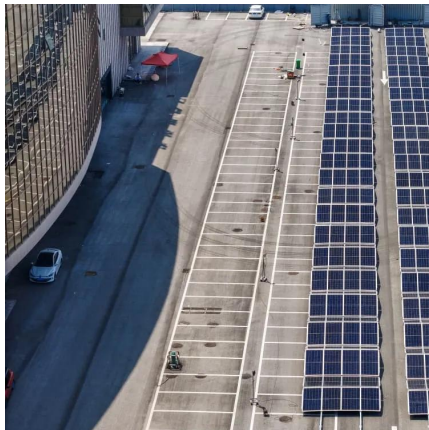
Jul 4, 2024 · Residential solar power systems typically output voltages between 200 and 600 volts, allowing them to work effectively with household appliances and feeding energy into the ...





Maximum voltage output from inverter

Sep 20, 2023 · What happened, the house runs at 242v, then Eskom volts increase up to 250, 253v where fan "motors", inverter disconnects from the grid, and powers the loads at 230v, the ...



72V to 230V inverter, pure sine wave

1 day ago · An inverter converts a 72 Volt DC voltage (battery) into an AC voltage (230V-50Hz). Stable 230V with pure sine wave
The standard output voltage is 230 Volt, 50Hz with a pure ...

Contact Us

For catalog requests, pricing, or partnerships, please visit:
<https://www.llsolarenergy.co.za>

Scan QR Code for More Information



<https://www.lsolarenergy.co.za>