

Is the battery of outdoor base station AP strong





Overview

Which battery is best for telecom base station backup power?

Among various battery technologies, Lithium Iron Phosphate (LiFePO₄) batteries stand out as the ideal choice for telecom base station backup power due to their high safety, long lifespan, and excellent thermal stability.

What makes a telecom battery pack compatible with a base station?

Compatibility and Installation Voltage Compatibility: 48V is the standard voltage for telecom base stations, so the battery pack's output voltage must align with base station equipment requirements. Modular Design: A modular structure simplifies installation, maintenance, and scalability.

What is a wide temperature range LiFePO₄ battery?

This translates to lower replacement frequency and maintenance costs. Wide Temperature Range LiFePO₄ batteries operate reliably in temperatures ranging from -20°C to 60°C, making them suitable for the diverse and often extreme environments of telecom base stations.

What is a lithium iron phosphate (LiFePO₄) battery?

Lithium Iron Phosphate (LiFePO₄) batteries are a type of lithium-ion battery with a lithium iron phosphate cathode and typically a graphite anode. Compared to traditional lead-acid batteries or other lithium-ion batteries (such as ternary lithium batteries), LiFePO₄ batteries offer several notable advantages:



Is the battery of outdoor base station AP strong



[Telecom Base Station Backup Power Solution: Design Guide ...](#)

Jun 5, 2025 · Discover the 48V 100Ah LiFePO4 battery pack for telecom base stations: safe, long-lasting, and eco-friendly. Optimize reliability with our design guide.

[Telecom Base Station Backup Power Solution: ...](#)

Jun 5, 2025 · Discover the 48V 100Ah LiFePO4 battery pack for telecom base stations: safe, long-lasting, and eco-friendly. Optimize reliability with ...



[Overview of Telecom Base Station Batteries](#)

These features make lithium-ion batteries a strong competitor to replace the traditional lead-acid batteries. Especially in the field of telecom backup ...

[How about base station energy storage ...](#)

Apr 7, 2024 · This section delves into the different types of batteries commonly used in base station energy storage and evaluates their ...



[How about base station energy storage batteries _NenPower](#)

Apr 7, 2024 · This section delves into the different types of batteries commonly used in base station energy storage and evaluates their respective strengths and weaknesses. Lithium-ion ...



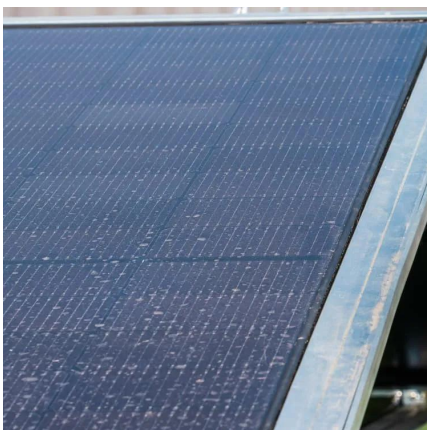
[How to Choose the Best Outdoor AP for Reliable Wireless ...](#)

4 days ago · When choosing the best outdoor AP for reliable wireless coverage, prioritize weatherproofing (IP67 or higher), strong signal range (802.11ax/Wi-Fi 6 support), Power over ...



[Which Battery Is Best for Outdoor Power Stations?](#)

When selecting a battery for outdoor power stations, it's essential to understand that the battery is the core factor that determines the unit's performance. Whether for camping, hiking, or ...





Communication Base Station Backup Battery

High-capacity energy storage solutions, specifically designed for communication base stations and weather stations, with strong weather resistance to ensure continuous operation of ...



ESS Leaflet_TBM48V50IP65_EU_0504

Feb 9, 2022 · Long Service Life for 48V Outdoor Telecom Applications Delta's TBM48V50IP65 battery is an excellent energy backup source for 48V outdoor applications, such as 3G/4G/5G ...

Overview of Telecom Base Station Batteries

These features make lithium-ion batteries a strong competitor to replace the traditional lead-acid batteries. Especially in the field of telecom backup power, lithium iron phosphate batteries and ...



Reliable Outdoor Base Station.Cheap Outdoor Base Station

In the telecommunications field, GEMBATTERY GF series telecom batteries are the reliable heart of communication equipment. With strong power output, they can provide stable power supply ...



[Ultimate Guide to Base Station Power Selection: Lithium vs.](#)

Nov 17, 2025 · 1 re Technical Characteristics: The Fundamental Differences Lithium Batteries (Mainstream: LiFePO4) LiFePO4 is the preferred lithium battery chemistry for telecom base ...



[How to Select the Best ESTEL Battery Backup for Base Stations](#)

May 29, 2025 · Choose the best telecom battery backup systems by evaluating capacity, battery type, environmental adaptability, maintenance, and scalability for base stations.

Contact Us

For catalog requests, pricing, or partnerships, please visit:
<https://www.llsolarenergy.co.za>

Scan QR Code for More Information



<https://www.lsolarenergy.co.za>