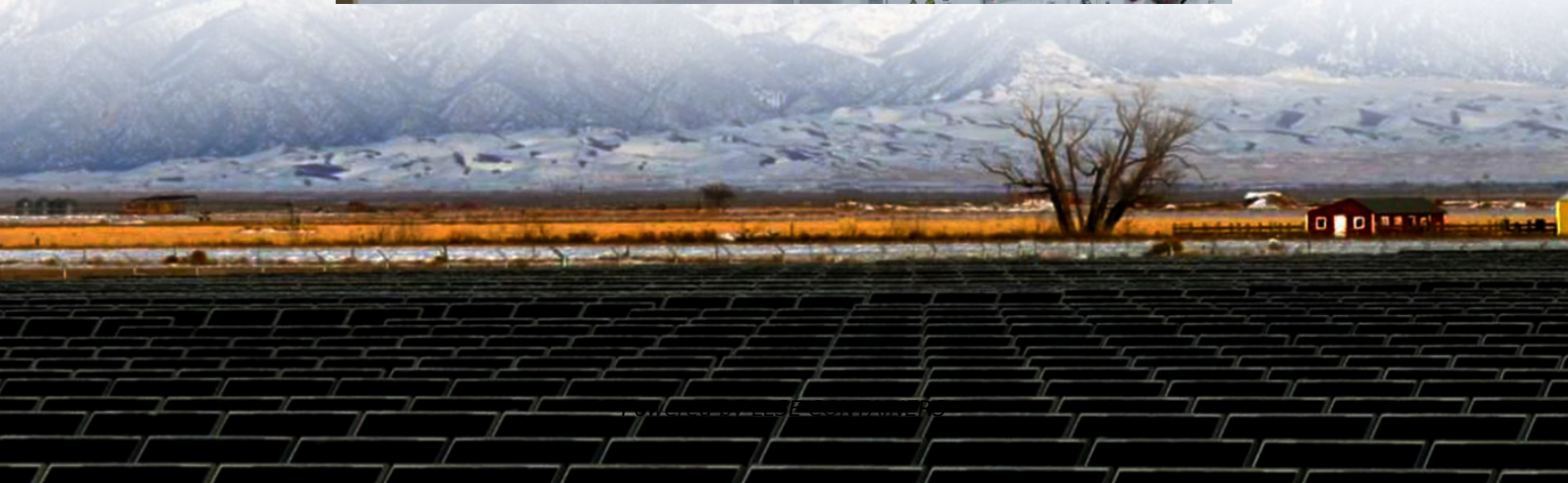


# **Is there an upper limit to the inverter connected to the solar panel**





## Overview

---

What is the maximum input voltage of a solar panel inverter?

The maximum input voltage of a solar panel inverter determines how you should set up your solar panels. Here's an example: If an inverter has a maximum input voltage of 600V and each panel produces 40V, you could connect up to 15 panels in series ( $15 \times 40V = 600V$ ).

Should a solar inverter be oversized?

Areas with high solar irradiance, like the Southwest U.S., can benefit from slightly oversizing panels to capture more energy. For regions with less sunlight, matching panel output more closely to the inverter's capacity can be more effective. Let's keep this simple!.

How many solar panels can a 600V inverter connect?

If an inverter has a maximum input voltage of 600V and each panel produces 40V, you could connect up to 15 panels in series ( $15 \times 40V = 600V$ ). Going over this voltage limit can harm the inverter or make it shut down, making your solar system less effective or even unusable. Equally important is the minimum input voltage.

Should solar panels be matched with inverters?

This article explores the critical aspects of matching solar panels with inverters, detailing the risks of overloading, the importance of correct sizing, and effective strategies for managing extra panels, such as upgrading inverters or using microinverters to optimize solar energy systems.



## Is there an upper limit to the inverter connected to the solar panel

---

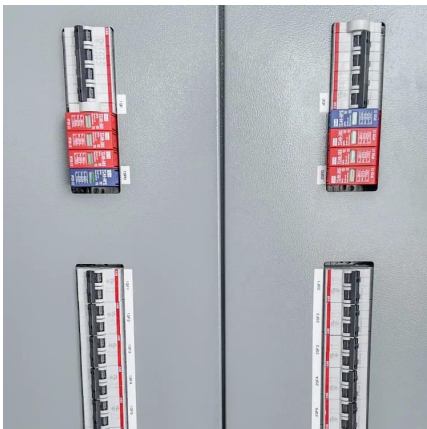


### [Is it Safe to Have Too Many Solar Panels on an Inverter?](#)

Apr 16, 2024 · This article explores the critical aspects of matching solar panels with inverters, detailing the risks of overloading, the importance of correct sizing, and effective strategies for ...

### [How Many Solar Panels Can I Connect to an ...](#)

4 days ago · Learn how to optimize your solar power system by understanding how many solar panels can be connected to an inverter. ...



### [What happens if you connect too many solar ...](#)

Sep 30, 2024 · Overloading your solar inverter by connecting too many solar panels can lead to a range of issues that may compromise both your ...

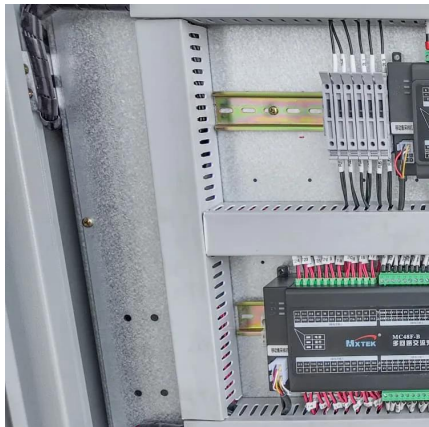
### [How Many Solar Panels Can One Inverter ...](#)

Sep 23, 2025 · How to Calculate Solar Panel String Size Manually Step 1: Determine Inverter Specifications- Identify the voltage input range of the ...



### [How Many Solar Panels Can I Connect to an Inverter?](#)

Nov 6, 2024 · Your inverter's wattage sets the upper limit on how many panels it can support. Matching panel output closely to this capacity helps prevent energy loss. For optimal ...



### [What is the maximum number of solar panels that can be connected ...](#)

Oct 26, 2025 · For instance, if your inverter has a maximum input voltage of 500 volts and each panel has an open - circuit voltage of 40 volts, you can connect a maximum of about 12 panels ...



### [How Many Solar Panels Can One Inverter Handle?](#)

Sep 23, 2025 · How to Calculate Solar Panel String Size Manually Step 1: Determine Inverter Specifications- Identify the voltage input range of the inverter and any safety margins required ...

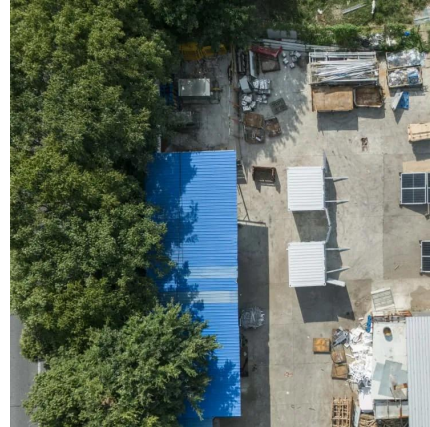






## What Happens When Solar Panels Exceed Inverter Capacity

Oct 11, 2025 · Each inverter has a specific capacity or capacity, and an overload occurs when the power input from the solar panels exceeds the inverter's capacity to handle or convert it safely ...

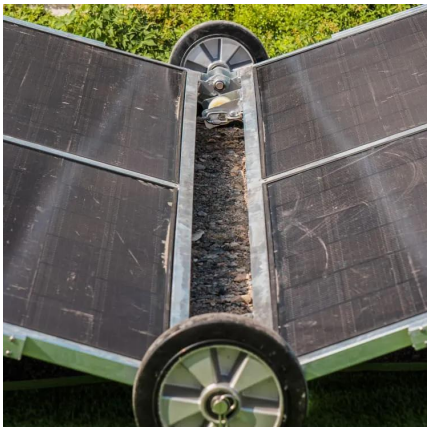


## Connecting too many solar panels to the ...

May 27, 2024 · How many solar panels can I connect to a solar inverter? To ensure the safety and effectiveness of the solar power system, it is ...

## How to connect solar panels to inverter and ...

May 7, 2025 · This guide explains how to connect solar panels to an inverter safely and effectively. We'll also discuss factors like inverter capacity to ...



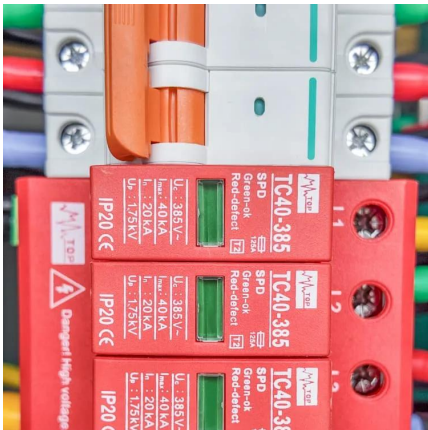
## Connecting too many solar panels to the inverter

May 27, 2024 · How many solar panels can I connect to a solar inverter? To ensure the safety and effectiveness of the solar power system, it is important to consult with a professional ...



### [How to connect solar panels to inverter and battery in 3 steps](#)

May 7, 2025 · This guide explains how to connect solar panels to an inverter safely and effectively. We'll also discuss factors like inverter capacity to help you determine how many ...



### [How Many Solar Panels Can I Connect to an ...](#)

Nov 6, 2024 · Your inverter's wattage sets the upper limit on how many panels it can support. Matching panel output closely to this capacity helps ...

### [How Many Solar Panels Can Be Connected To Solar Inverter?](#)

Mar 7, 2025 · It involves the specifications of the inverter and solar panels, such as the solar input power, voltage range, current of the solar inverter, and the total power, total voltage, total ...



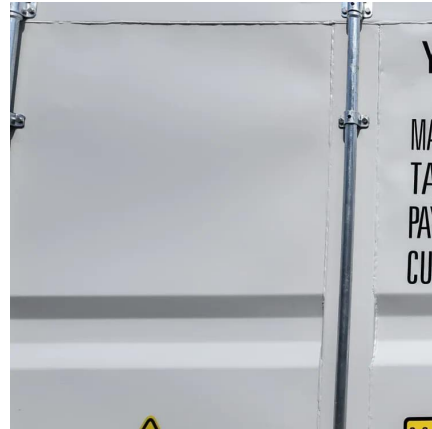
### [How Many Solar Panels Can I Connect to an Inverter? A...](#)

4 days ago · Learn how to optimize your solar power system by understanding how many solar panels can be connected to an inverter. Explore inverter specifications, wiring configurations, ...



### [What happens if you connect too many solar panels to an inverter](#)

Sep 30, 2024 · Overloading your solar inverter by connecting too many solar panels can lead to a range of issues that may compromise both your system's efficiency and its longevity. If you ...



## Contact Us

---

For catalog requests, pricing, or partnerships, please visit:  
<https://www.llsolarenergy.co.za>

### Scan QR Code for More Information



<https://www.llsolarenergy.co.za>