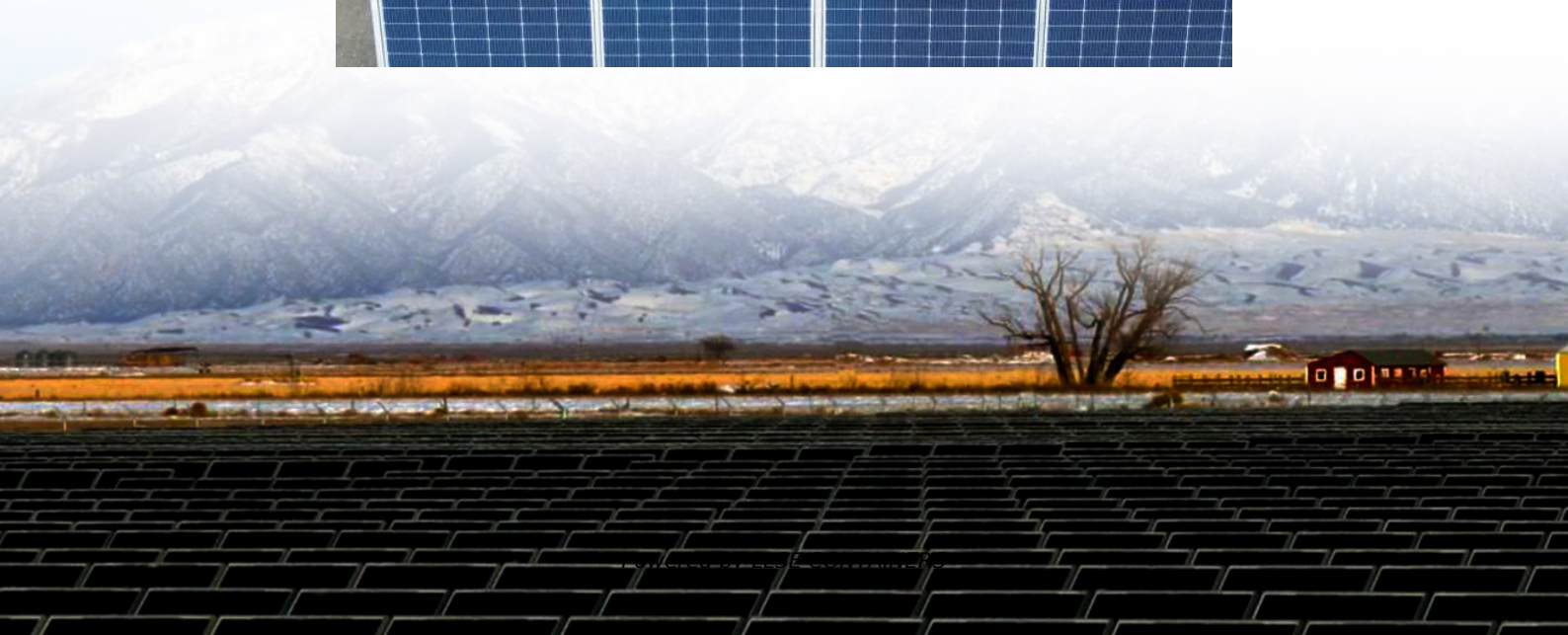
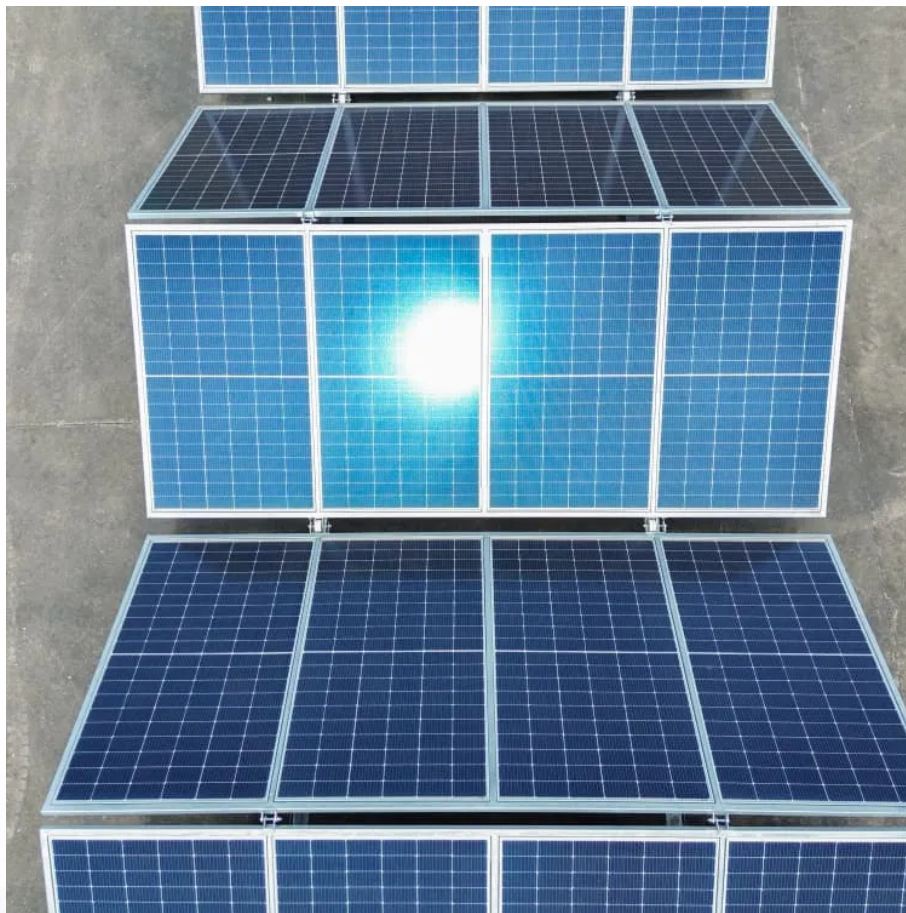


Juba 8-input 1-output solar combiner box





Overview

What is shlx-pv8/1 PV combiner box bus?

SHLX-PV8/1 PV combiner box bus synthetic DC input of 8 PV components to 1 output. Each channel is with a fuse. Output side is equipped with lightning protection and circuit breaker. It greatly simplifies input wiring of DC power distribution cabinet and inverter. Realizes lightning protection, short circuit protection and grounding protection.

What are the different types of PV combiner box?

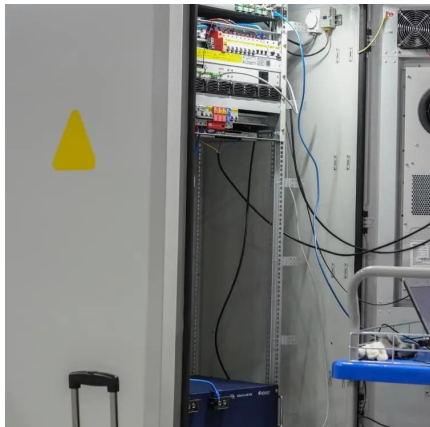
PV combiner box divided into two types: intelligent box and non-intelligent box. Intelligent PV combiner box is equipped with monitoring unit, then detects input current of each string, detects inside temperature, detects lightning protection status, detects circuit breaker status and summarizes output voltage and so on.

What is a solar panel box made of?

Strict test for high and low temperature, used widely. The box body is made of cold rolled steel and other metal materials. Used for single crystal silicon solar modules, polycrystalline silicon solar modules, thin film solar modules. Current rating of the photovoltaic fuse, circuit breaker, load isolation switch is modified.



Juba 8-input 1-output solar combiner box

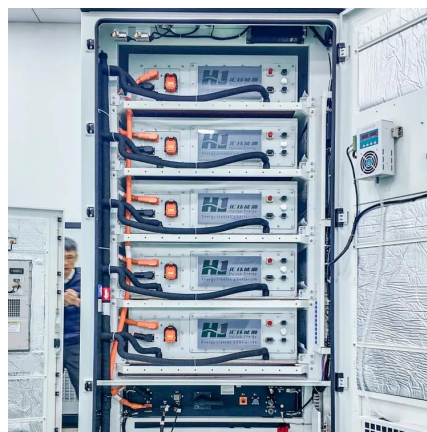


[8 Strings 1 Output Solar PV DC Combiner Box Waterproof Junction Box](#)

6 days ago · 4. When choose the pv combiner box, based on the input dc voltage range and output power of inverter, certain qty of panels will be connected in series as a string, certain ...

[WSDB-PV8/1D Solar Combiner Box](#)

Feature highlights: WSDB-PV8/1D Solar PV Combiner Box is designed for solar panel systems, featuring 8 input and 1 output strings with a maximum DC voltage of 1000V and 125A output ...



8 String PV Combiner Box

The final voltage output of the string is the sum of the individual panel voltages. In a PV combiner box, multiple strings of solar panels are connected and consolidated. Each string typically has ...



[8 strings 8 in 1 out dc1000V 120A ip65 solar ...](#)

Pinji Electronic Technology Co.,Ltd. is a professional combiner box, 8 strings combiner box, pv combiner box 8 strings Manufacturers & Suppliers in ...



WSDB-PV8/1D Solar Combiner Box

Mar 3, 2025 · Feature highlights: WSDB-PV8/1D Solar PV Combiner Box is designed for solar panel systems, featuring 8 input and 1 output strings with a maximum DC voltage of 1000V ...



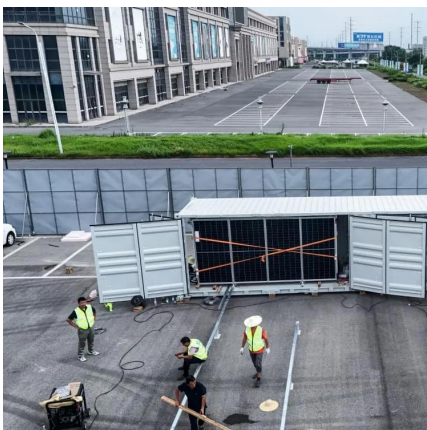
8 String Solar Input DC Combiner Box with SPD and Fuse 8/1 9/1 10/1 11/1

Nov 12, 2025 · Details of PV combiner box
 Advantage of PV combiner box ?High reliability
 With DC FUSE With DC Surge Protection Device
 With DC circuit breaker or DC load isolation ...



8 Input 1 Output PV Combiner Box for 6-8 Solar Arrays , MPPT Solar ...

Our 8 input 1 output PV Combiner Box is designed to streamline the output DC current of your solar arrays, maximizing their potential. With the capacity to connect 6-8 solar arrays in ...





PV8/1 DC combiner box

Sep 9, 2025 · PV8/1 PV combiner box bus synthetic DC input of 8 PV components to 1 output.. Each channel is equipped with a fuse. Lightning protection and circuit breakers are installed on ...



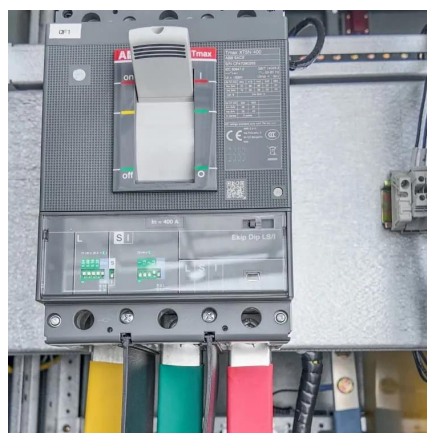
[SHLX-PV 8-1 DC Combiner Box](#)

SHLX-PV8/1 PV combiner box bus synthetic DC input of 8 PV components to 1 output. Each channel is with a fuse. Output side is equipped with lightning protection and circuit breaker



[8 String Solar Input DC Combiner Box with ...](#)

Nov 12, 2025 · Details of PV combiner box
Advantage of PV combiner box ?High reliability
With DC FUSE With DC Surge Protection Device
With ...



[8 strings 8 in 1 out dc1000V 120A ip65 solar pv combiner box](#)

Pinji Electronic Technology Co.,ltd. is a professional combiner box, 8 strings combiner box, pv combiner box 8 strings Manufacturers & Suppliers in China, focused on the 8 strings 8 in 1 out ...



Contact Us

For catalog requests, pricing, or partnerships, please visit:
<https://www.llsolarenergy.co.za>

Scan QR Code for More Information



<https://www.llsolarenergy.co.za>