

Lesotho 5g base stations consume a lot of power





Overview

How does mobile data traffic affect the energy consumption of 5G base stations?

The explosive growth of mobile data traffic has resulted in a significant increase in the energy consumption of 5G base stations (BSs).

What is 5G BS power consumption?

The 5G BS power consumption mainly comes from the active antenna unit (AAU) and the base band unit (BBU), which respectively constitute BS dynamic and static power consumption. The AAU power consumption changes positively with the fluctuation of communication traffic, while the BBU power consumption remains basically unchanged , , .

What is 5G base station?

1. Introduction 5G base station (BS), as an important electrical load, has been growing rapidly in the number and density to cope with the exponential growth of mobile data traffic . It is predicted that by 2025, there will be about 13.1 million BSs in the world, and the BS energy consumption will reach 200 billion kWh .

Do base stations dominate the energy consumption of the radio access network?

Furthermore, the base stations dominate the energy consumption of the radio access network. Therefore, it is reasonable to focus on the power consumption of the base stations first, while other aspects such as virtualization of compute in the 5G core or the energy consumption of user equipment should be considered at a later stage.



Lesotho 5g base stations consume a lot of power



[Energy consumption optimization of 5G base stations ...](#)

Aug 1, 2023 · An energy consumption optimization strategy of 5G base stations (BSs) considering variable threshold sleep mechanism (ECOS-BS) is proposed, which includes the initial ...

[Comparison of Power Consumption Models for 5G Cellular Network Base](#)

Jul 1, 2024 · This paper conducts a literature survey of relevant power consumption models for 5G cellular network base stations and provides a comparison of the models. It highlights ...



[Power consumption based on 5G communication](#)

Oct 17, 2021 · At present, 5G mobile traffic base stations in energy consumption accounted for 60% ~ 80%, compared with 4G energy consumption increased three times. In the future, high ...



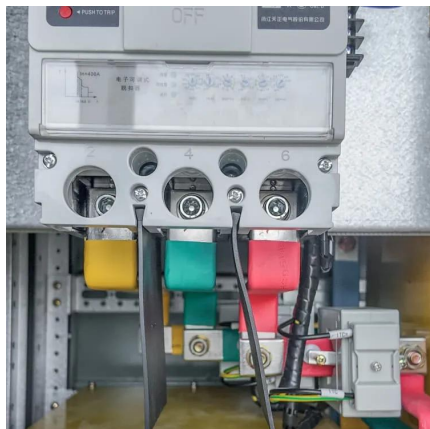
[Energy Management of Base Station in 5G and B5G: Revisited](#)

Apr 19, 2024 · Since mmWave base stations (gNodeB) are typically capable of radiating up to 200-400 meters in urban locality. Therefore, high density of these stations is required for ...



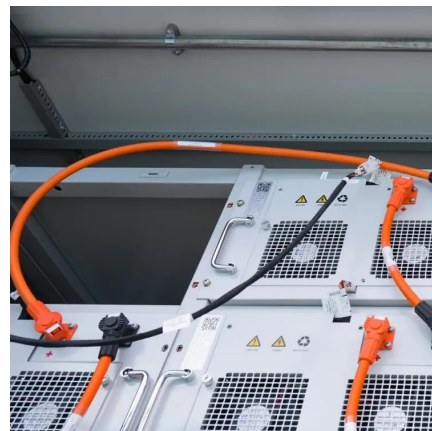
[Lesotho 5G communication base station energy 2025](#)

The energy consumption of 5G base stations (BSs) is significantly higher than that of 4G BSs, creating challenges for operators due to increased costs and carbon emissions.



[Why does 5g base station consume so much power and how ...](#)

Apr 3, 2025 · The power consumption of the 5G base station mainly comes from the AU module processing and conversion and high power-consuming high radio frequency signals, the ...



[5G base stations consume too much electricity. How can we ...](#)

Sep 27, 2021 · At present, the overall energy consumption of 5G base stations is mainly concentrated in four parts: base stations, transmission, power supply and computer room air ...





What is the Power Consumption of a 5G Base Station?

Nov 15, 2024 · Why is 5G Power Consumption Higher? 1. Increased Data Processing and Complexity These 5G base stations consume about three times the power of the 4G stations. ...



Power Consumption Modeling of 5G Multi-Carrier Base ...

Jan 23, 2023 · However, there is still a need to understand the power consumption behavior of state-of-the-art base station architectures, such as multi-carrier active antenna units (AAUs), ...

Contact Us

For catalog requests, pricing, or partnerships, please visit:
<https://www.llsolarenergy.co.za>

Scan QR Code for More Information



<https://www.llsolarenergy.co.za>