

Lilongwe solar container communication station Wind and Solar Complementary Frame





Overview

Can a multi-energy complementary power generation system integrate wind and solar energy?

Simulation results validated using real-world data from the southwest region of China. Future research will focus on stochastic modeling and incorporating energy storage systems. This paper proposes constructing a multi-energy complementary power generation system integrating hydropower, wind, and solar energy.

Is a multi-energy complementary wind-solar-hydropower system optimal?

This study constructed a multi-energy complementary wind-solar-hydropower system model to optimize the capacity configuration of wind, solar, and hydropower, and analyzed the system's performance under different wind-solar ratios. The results show that when the wind-solar ratio is 1.25:1, the overall system performance is optimal.

What is the maximum integration capacity of wind and solar power?

At this ratio, the maximum wind-solar integration capacity reaches 3938.63 MW, with a curtailment rate of wind and solar power kept below 3 % and a loss of load probability maintained at 0 %. Furthermore, under varying loss of load probabilities, the total integration capacity of wind and solar power increases significantly.

Do big countries experience longer compound low wind-solar output periods?

Most big countries are projected to experience longer compound low wind-solar output periods (Fig. 1m,n), with substantial differences across climate models (Supplementary Figs. 1 and 2).



Lilongwe solar container communication station Wind and Solar Cor



[Wind power energy saving , Shanghai Warner ...](#)

Wind and solar energy complementary working system well meet the power demand of the communication base station.The wind and solar hybrid ...

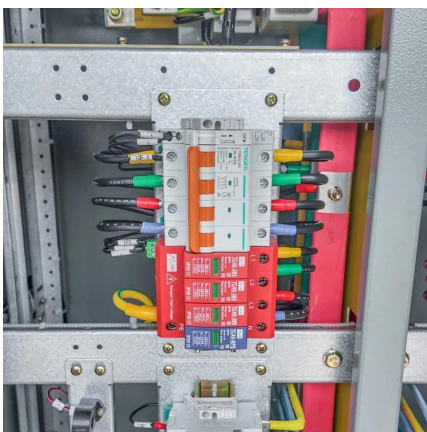
[Strategies for climate-resilient global wind and solar power ...](#)

Jun 18, 2025 · Climate-intensified supply-demand imbalances may raise hourly costs of wind and solar power systems, but well-designed climate-resilient strategies can provide help.



[Optimal Design of Wind-Solar complementary power ...](#)

Dec 15, 2024 · The results indicate that a wind-solar ratio of around 1.25:1, with wind power installed capacity of 2350 MW and photovoltaic installed capacity of 1898 MW, results in ...



[Construction of wind and solar complementary ...](#)

Dec 1, 2025 · The successful grid connection of a 54-MW/100-kWp wind-solar complementary power plant in NanâEUR(TM)ao, Guangdong Province, in 2004 was the first windâEUR"solar ...



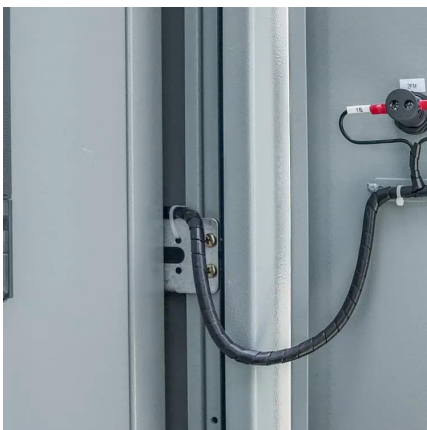
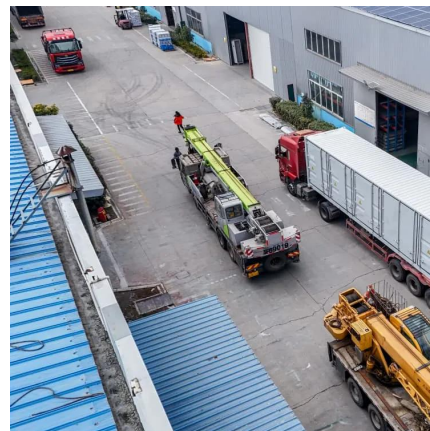
[Wind power energy saving , Shanghai Warner Telecom Co., ...](#)

Wind and solar energy complementary working system well meet the power demand of the communication base station. The wind and solar hybrid integrated power supply system uses ...



[Research on Optimal Configuration of Wind-Solar-Storage Complementary](#)

Dec 29, 2024 · To address challenges such as consumption difficulties, renewable energy curtailment, and high carbon emissions associated with large-scale wind and solar power ...



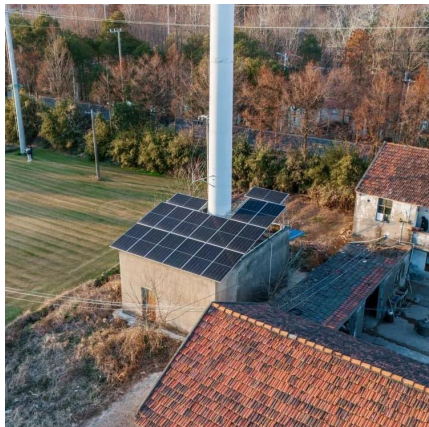
[Modular Solar Power Station Containers: The Future of ...](#)

Feb 13, 2025 · Modular solar power station containers represent a revolutionary approach to renewable energy deployment, combining photovoltaic technology with standardized shipping ...



[Portable Solar Power Containers for Remote Communication ...](#)

Mar 28, 2025 · The initial introduction toward the sustainable infrastructure has opened the door to realizing the new innovations in remote communication networks. The conventional power ...

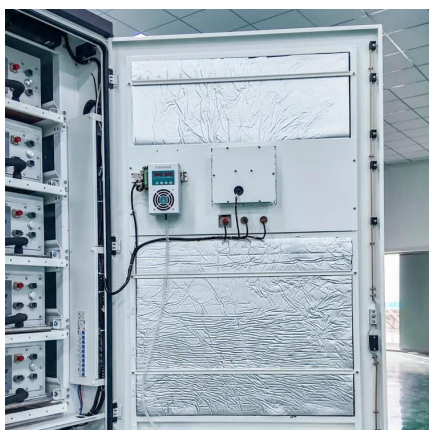
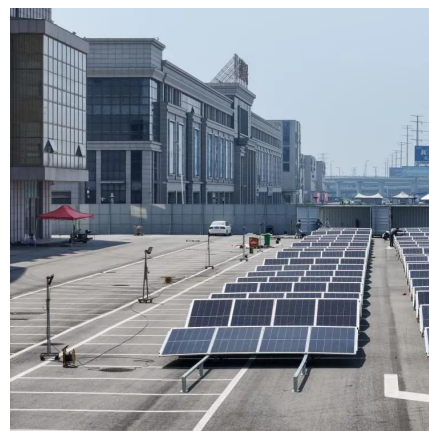


[Operating communication base stations with wind and ...](#)

The wind-solar-diesel hybrid power supply system of the communication base station is composed of a wind turbine, a solar cell module, an integrated controller for hybrid energy

[Integrated Solar-Wind Power Container for Communications](#)

This large-capacity, modular outdoor base station seamlessly integrates photovoltaic, wind power, and energy storage to provide a stable DC48V power supply and optical distribution. Perfect ...



[Communication base station wind and solar ...](#)

Nov 27, 2025 · The wind-solar-diesel hybrid power supply system of the communication base station is composed of a wind turbine, a solar cell module, an integrated controller for hybrid ...



Contact Us

For catalog requests, pricing, or partnerships, please visit:
<https://www.llsolarenergy.co.za>

Scan QR Code for More Information



<https://www.llsolarenergy.co.za>