

# **Majuro BMS Battery Management System**





## Overview

---

What is a battery management system (BMS)?

Battery management systems (BMSs) are discussed in depth, as are their applications in EVs and renewable energy storage systems. This review covered topics ranging from voltage and current monitoring to the estimation of charge and discharge, protection, equalization of cells, thermal management, and actuation of stored battery data.

What is a BMS used for?

BMSs are used in various applications, including Electric Vehicles (EVs), smartphones, renewable energy storage systems, and other devices powered by rechargeable batteries. The building unit of the battery system is called the battery cell. The battery cells are connected in series and in parallel to compose the battery module.

What is a BMS master controller?

Data is sent to a BMS Master Controller, which aggregates and analyzes the information. Battery Management Unit (BMU): The Battery Management Unit (BMU) is a key component in a Battery Management System (BMS) responsible for monitoring and measuring critical parameters of the entire battery pack or its individual cells.

What is a battery management unit (BMU)?

Battery Management Unit (BMU): The Battery Management Unit (BMU) is a key component in a Battery Management System (BMS) responsible for monitoring and measuring critical parameters of the entire battery pack or its individual cells. Voltage Measurement: Identifies undervoltage, overvoltage, or imbalance across cells.



## Majuro BMS Battery Management System

---

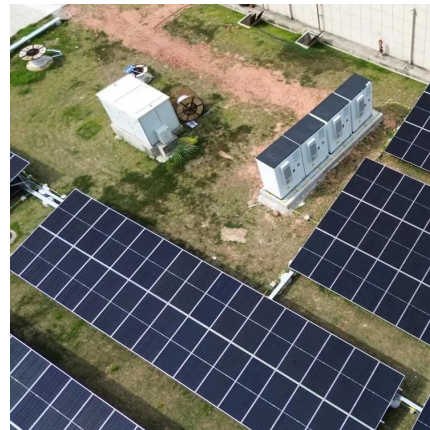


### Battery Management System

6 days ago · The Battery Management System (BMS) is the hardware and software control unit of the battery pack. This is a critical component that measures cell voltages, temperatures, and ...

### [A review of battery energy storage systems and advanced battery](#)

May 1, 2024 · The battery management system (BMS) is an essential component of an energy storage system (ESS) and plays a crucial role in electric vehicles (EVs), as seen in Fig. 2.



### [Battery Management System Guide: Functions, Circuits](#)

3 days ago · Comprehensive guide to Battery Management Systems (BMS), covering functions, circuits, components, and selection tips for safer, more reliable lithium-ion battery packs.

### [Battery Management System \(BMS\) Detailed Explanation: ...](#)

May 7, 2025 · Battery Management System (BMS) is the "intelligent manager" of modern battery packs, widely used in fields such as electric vehicles, energy storage stations, and





consumer ...



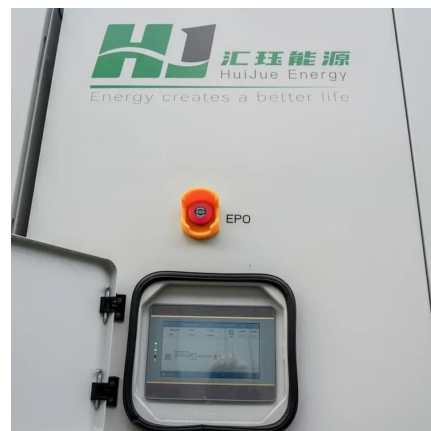
## [Understanding BMS \(Battery Management System\): The ...](#)

2 days ago · Discover how an advanced Battery Management System (BMS) is the critical brain behind lithium-ion batteries, enhancing safety, maximizing performance, and exten



## [Technical Deep Dive into Battery Management System BMS](#)

Sep 1, 2025 · A Battery Management System (BMS) is an electronic system designed to monitor, manage, and protect a rechargeable battery (or battery pack). It plays a crucial role in ensuring ...



## [BMS Battery Management system EV Energy Storage](#)

Mar 6, 2025 · What is a Battery Management System (BMS)? A Battery Management System (BMS) is integral to the performance, safety, and longevity of battery packs, effectively serving ...





## Contact Us

---

For catalog requests, pricing, or partnerships, please visit:  
<https://www.llsolarenergy.co.za>

### Scan QR Code for More Information



<https://www.llsolarenergy.co.za>