

Malawi container waste heat power generation





Overview

What is wastewoima® – waste to energy power plant?

wasteWOIMA® – waste to energy power plant is the solution to improve the emerging countries living conditions and harness municipal solid waste to energy.

What is waste heat-to-power technology?

Waste heat-to-power technologies recover energy from waste heat and convert it into electricity. However, the temperatures of waste heat streams are generally too low to generate electricity using traditional steam turbine technology.

What is a modular waste-to-energy power plant?

The modular waste-to-energy power plant consists of one to two WOIMAlines with the following parameters The plant produces (15/20 MW fuel models respectively) Out of 100 / 130 tons of Refuse Derived Fuel (RDF) or 130 / 170 tons of Municipal Solid Waste (MSW) per day. Municipal Solid Waste (MSW) is available in abundance everywhere in the world.

Can heat integration improve waste-to-power technologies?

Even though industries have their heat integration site plans to use as much energy as possible and reduce waste heat streams, the potential to expand waste-to-power technologies is still large.



Malawi container waste heat power generation



[Inside Malawi's Incinerator Project: Transforming Waste into Energy](#)

Dec 3, 2025 · Inside Malawi's Incinerator Project: Transforming Waste into Energy Malawi, a landlocked country in southeastern Africa, is facing a growing waste management crisis. The ...

[Malawi Embraces Green Technology: New Incinerator to Combat Waste ...](#)

Jul 9, 2025 · Malawi, a landlocked nation in southern Africa, is facing significant waste management challenges. Rapid urbanization and industrialization have led to escalating waste ...



[Waste-to-Energy . Modular Power Plant](#)

wasteWOIMA® - waste to energy power plant is the solution to improve the emerging countries living conditions and harness municipal solid waste to energy.



Blantyre Waste to Energy

4 days ago · Business Activity Intend to develop waste-to-energy plants, deploying technologies that extract residual energy from municipal solid waste and convert that into electricity, which ...



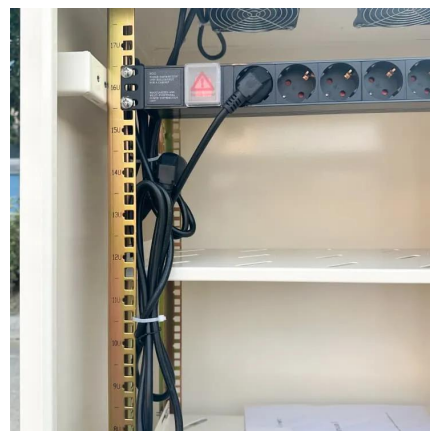
[Waste-to-Energy , Modular Power Plant](#)

wasteWOIMA® - waste to energy power plant is the solution to improve the emerging countries living conditions and harness municipal solid waste to ...



[Clean and Green Power: Malawi's New Incinerator Ushers in ...](#)

5 days ago · Power Generation: The incinerator utilizes waste-to-energy technology, generating electricity and heat for the city of Blantyre, reducing reliance on fossil fuels. Air Pollution ...



[Malawi Waste Heat Recovery Market \(2025-2031\) ,Trends, ...](#)

6Wresearch actively monitors the Malawi Waste Heat Recovery Market and publishes its comprehensive annual report, highlighting emerging trends, growth drivers, revenue analysis, ...





4 Waste heat-to-power technologies

What Waste heat-to-power technologies recover energy from waste heat and convert it into electricity. However, the temperatures of waste heat streams are generally too low to generate ...



Modeling of waste heat powered energy system for container ships

Jul 1, 2016 · A novel waste heat powered system is proposed to meet heating, cooling and refrigeration demands on a container ship to reduce its fuel consumption. A...

Malawi's Green Future: Incinerator Fuels Economic Growth...

Malawi, a landlocked nation in Southern Africa, faces significant environmental challenges and energy scarcity. To address these issues and embrace a green future, the country is exploring ...



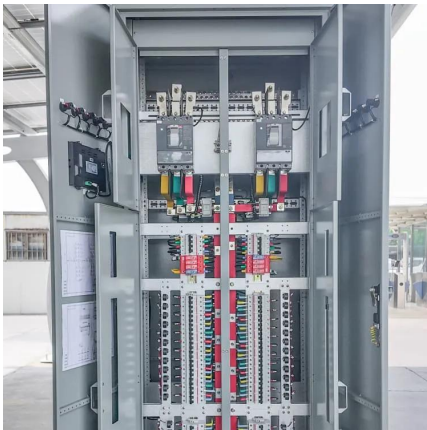
Modular Waste-to-Energy Plants , Sumitomo ...

Modular waste-to-energy plants reduce the quantity of waste placed in landfills and improves people's health and general living conditions. ...



[Clean and Green Power: Malawi's New ...](#)

5 days ago · Power Generation: The incinerator utilizes waste-to-energy technology, generating electricity and heat for the city of Blantyre, ...



[Modular Waste-to-Energy Plants , Sumitomo SHI FW](#)

Modular waste-to-energy plants reduce the quantity of waste placed in landfills and improves people's health and general living conditions. Together with our strategic partner, Woima ...

Contact Us

For catalog requests, pricing, or partnerships, please visit:
<https://www.llsolarenergy.co.za>

Scan QR Code for More Information



<https://www.llsolarenergy.co.za>