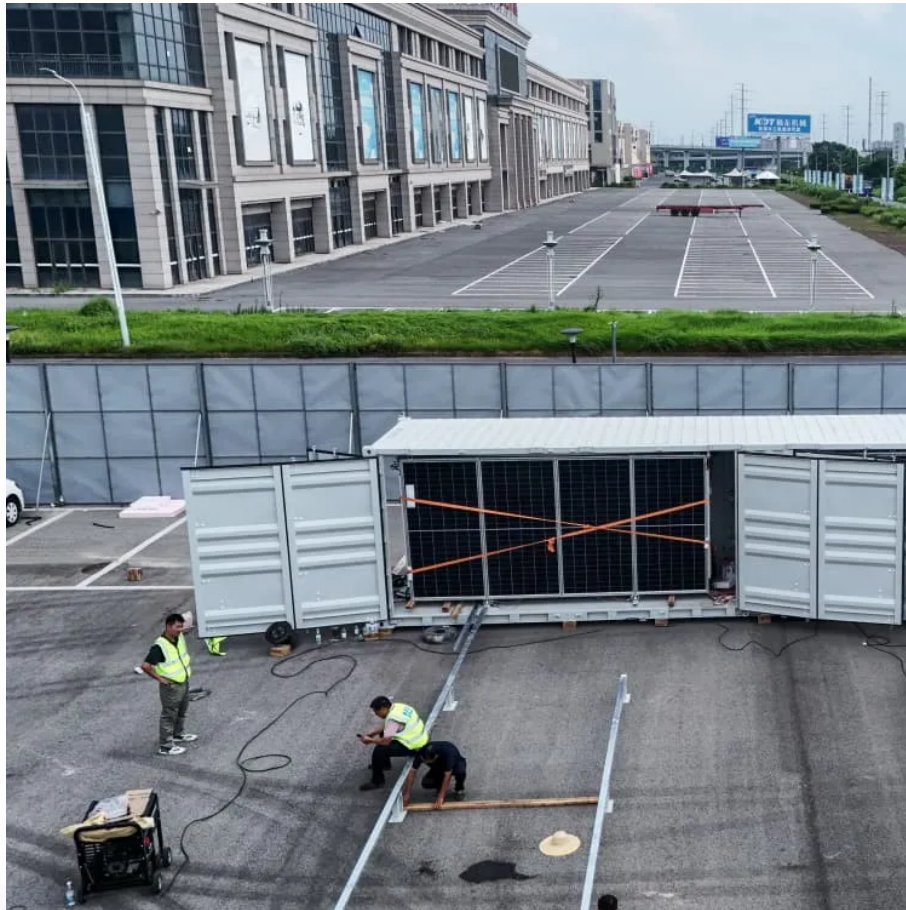


Malaysia volt inverter equipment container





Overview

Who is ALTV Engineering Sdn Bhd?

Our passion is to make every user a HASSLE FREE experience when dealing with Drives or Inverters, and leave all your headaches to ALTV. ALTV Engineering Sdn Bhd is a comprehensive drives or inverters product and solution provider. Our company is located in Subang Jaya, Selangor, Malaysia.

What is a containerized power conversion system?

This containerized solution delivers a reliable, cost-effective, plug & play, factory integrated power conversion system platform for utility scale solar and battery energy storage applications. Provides integration for standalone PV, PV + BESS, and PV + BESS + wind configurations.

What types of inverters does invt offer?

Except for the inverters, INVT can also provide customers with PLC, HMI, servo and motion systems, wind power inverters, Static Var Generator (SVG) and photovoltaic inverters.

What is a proinsener solar inverter station?

Proinsener Solar inverter stations are designed and integrated specifically for each project. It is an easily installable and compact product perfect for generating solar power on a large scale. All this allows easy and quick field connection to the medium voltage transforming station (MV), which reduces transport and installation costs.



Malaysia volt inverter equipment container



Container Inverters

Jan 2, 2025 · Discover high-capacity solar inverters for commercial and industrial use. Explore reliable container inverters with hybrid technology, lithium battery storage, and advanced ...

[Frequency Inverter, Softstarter Supplier Malaysia, Selangor, ...](#)

ALTV Engineering Sdn Bhd is a comprehensive drives or inverters product and solution provider. Our company is located in Subang Jaya, Selangor, Malaysia. We are dealing with product ...



Contact Us

For catalog requests, pricing, or partnerships, please visit:
<https://www.llsolarenergy.co.za>

Scan QR Code for More Information



<https://www.lsolarenergy.co.za>