

# **Maximum charging and discharging power of energy storage equipment**





## Overview

---

What is a fully discharged power supply (SoC)?

The amount of energy stored in a device as a percentage of its total energy capacity Fully discharged: SoC = 0% Fully charged: SoC = 100% Depth of discharge (DoD) The amount of energy that has been removed from a device as a percentage of the total energy capacity K. Webb ESE 471 6 Capacity.

What is the maximum energy accumulated in a battery?

The maximum amount of energy accumulated in the battery within the analysis period is the Demonstrated Capacity (kWh or MWh of storage exercised). In order to normalize and interpret results, Efficiency can be compared to rated efficiency and Demonstrated Capacity can be divided by rated capacity for a normalized Capacity Ratio.

What is a battery energy storage system?

Battery Energy Storage Systems (BESS) are essential components in modern energy infrastructure, particularly for integrating renewable energy sources and enhancing grid stability.

What is battery energy storage systems (Bess)?

Learn about Battery Energy Storage Systems (BESS) focusing on power capacity (MW), energy capacity (MWh), and charging/discharging speeds (1C, 0.5C, 0.25C). Understand how these parameters impact the performance and applications of BESS in energy manageme



## Maximum charging and discharging power of energy storage equipment

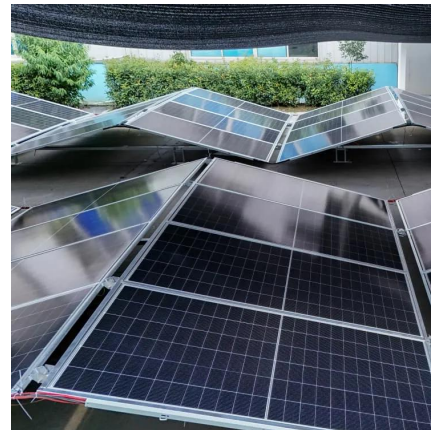


### [Energy storage charging and discharging losses](#)

Manage Distributed Energy Storage Charging and Discharging Strategy: Models and Algorithms  
Abstract: The stable, efficient and low-cost operation of the grid is the basis for the economic ...

### Analysis of the storage capacity and charging and discharging power ...

Dec 15, 2020 · Highlights o An optimal ratio of charging and discharging power for energy storage system. o Working capacity of energy storage system based on price arbitrage. o

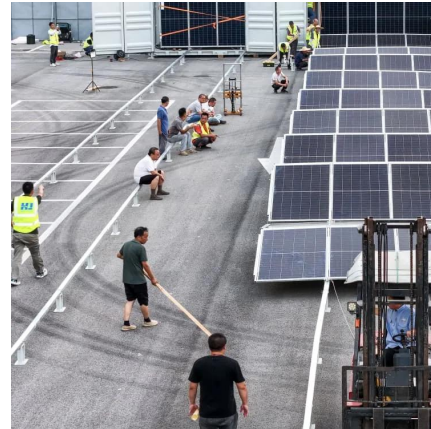


### [Energy Storage Battery Parameters , EB BLOG](#)

Oct 22, 2024 · Energy storage system capacity is typically indicated as maximum discharge power/system capacity ratio (kW/kWh); for instance, a 500kW/1MWh energy station would ...

## [SECTION 2: ENERGY STORAGE FUNDAMENTALS](#)

Jun 14, 2022 · capacity, The total energy that can be extracted from a device for use Difference between stored energy at maximum state of charge (SoC) and minimum SoC In general, ...



### Battery Energy Storage System Evaluation Method

Jan 30, 2024 · Within each time-step, P is the Power (kW or MW) charging or discharging from the battery which should be recorded separately to recognize that there could be both ...



### Understanding BESS: MW, MWh, and Charging/Discharging ...

Sep 15, 2024 · Battery Energy Storage Systems (BESS) are essential components in modern energy infrastructure, particularly for integrating renewable energy sources and enhancing grid ...



### Mobile Battery Energy Storage System for Flexible Smart Power

2 days ago · MAX POWER BCH Series mobile energy storage enables "slow charge, fast discharge" operation with 400-600kW capacity. It stabilizes power plant output and achieves ...





## Maintenance Strategy of Microgrid Energy Storage ...

Mar 14, 2024 · There is energy loss in the process of charging and discharging of energy storage power stations, and its efficiency affects the economy of energy storage power stations and ...



## Charging power and discharging power of energy ...

Abstract: We consider the control problem of fulfilling the desired total charging/discharging power while balancing the state-of-charge (SoC) of the networked battery units with unknown ...

## Contact Us

---

For catalog requests, pricing, or partnerships, please visit:  
<https://www.llsolarenergy.co.za>

**Scan QR Code for More Information**



<https://www.lsolarenergy.co.za>