

# **Maximum current of portable power supply**





## Overview

---

What is the maximum power output of a USB cable?

SPR: The SPR is based on the USB PD3.0 standard with a maximum power output of 100W. Available fixed voltage levels are 5V, 9V, 15V, and 20V, with current ratings of 3A or 5A. For example, at 20V, 5A, the upper power limit of 100W can be reached. EPR: The latest USB PD3.1 standard extends the maximum power output from 100W to 240W.

How many watts can a portable power station Power?

Portable power stations have maximum output limits (measured in watts), determining the devices they can support. For example, ALLPOWERS R600 has a maximum of 600 watts output, so you can easily power laptops, drones, etc. ALLPOWERS R2500 has 2500W output, which is much more than R600, you can even power up an electric drill.

How many watts can a USB cable carry?

And while standard USB Type-C ® cable carries up to 3A current, USB Type-C cable which supports 100W power delivery or EPR is allowed to carry up to 5A, —it means the maximum power is 240W. 1 Checkmark indicates that the current varies according to the PD Power. Current value (A) calculated by PD power/target voltage. Maximum value is 3A.

How many watts can a USB pd3.1 output?

For example, at 20V, 5A, the upper power limit of 100W can be reached. EPR: The latest USB PD3.1 standard extends the maximum power output from 100W to 240W. Not only does EPR cover all voltage-current combinations of SPR, it also adds three new fixed voltage levels: 28V, 36V, and 48V, all with a maximum current of 5A.



## Maximum current of portable power supply

---



### [USB Power Delivery: The Technology 1](#)

3 days ago · Figure 2: Change in power feeding direction by FRS Please refer to USB Power Delivery (3) The Technology 2 - USB Type-C and Role Swap about "Role Swap" in detail. ...

### [The Ultimate Guide to EcoFlow Portable Power Station Specs](#)

Jun 24, 2025 · You don't have to wait for the battery to recharge for the PPS to function. Additionally, every current EcoFlow portable power station (except the DELTA Max) uses ...



### [What Devices Can a Portable Power Station Run? A Guide to ...](#)

Dec 17, 2024 · Portable power stations have maximum output limits (measured in watts), determining the devices they can support. For example, ALLPOWERS R600 has a maximum ...

### [USB PD EPR and SPR: Unraveling the Differences](#)

Apr 1, 2025 · Power Limits: SPR: The SPR is based on the USB PD3.0 standard with a maximum power output of 100W. Available fixed voltage levels are 5V, 9V, 15V, and 20V, with



current ...



### [What is the output current of a portable power station?](#)

May 14, 2025 · It's important to note that this is the maximum current the power station can supply. In practice, the actual current drawn by a device connected to the AC port will depend ...



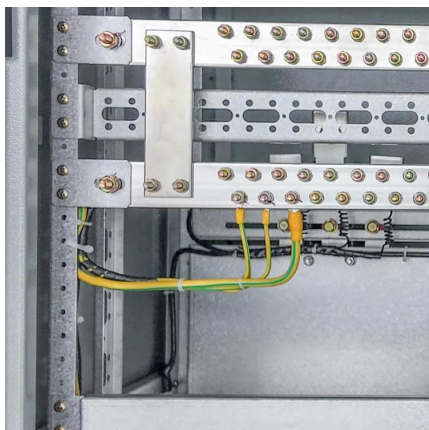
### [Power Supply Operating Limits: A Guide to Voltage, Current](#)

May 15, 2025 · Learn how to safely manage power supply specifications, including undervoltage conditions, current limitations, and temperature constraints. Expert guidance for optimal power ...



### [What is the maximum power consumption a portable power supply ...](#)

Hey there! As a supplier of Portable Power Supplies, I often get asked about the maximum power consumption a portable power supply can handle. It's a crucial question, especially for those ...







## [Emergency power supply enabling solar PV integration ...](#)

May 5, 2025 · ABSTRACT This paper presents a detailed investigation of an emergency power supply that enables solar photovoltaic (PV) power integration with a battery energy storage ...

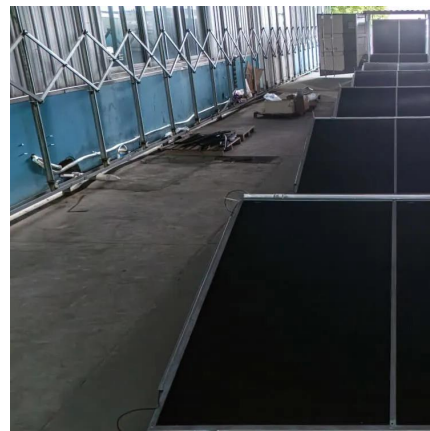


## [USB Type-C® and USB Power Delivery: Designing for ...](#)

Oct 14, 2024 · Battery-powered products and next-generation solutions Portable battery-powered products such as Bluetooth® speakers and power tools will benefit from the adoption of USB ...

## [USB-C 240W Power Delivery 3.1 Extended Power Range ...](#)

Sep 29, 2025 · This solution supplies the maximum power of 240W for the emerging USB PD 3.1 extended power range (EPR) specification. It can be used for a wide variety of power supply ...



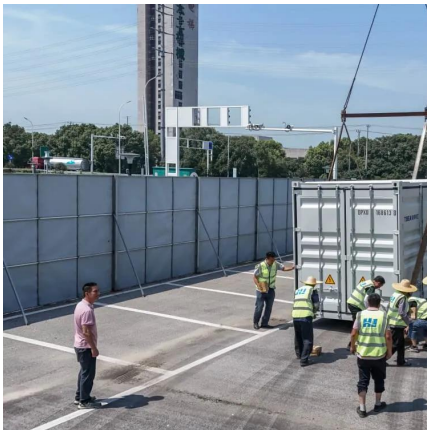
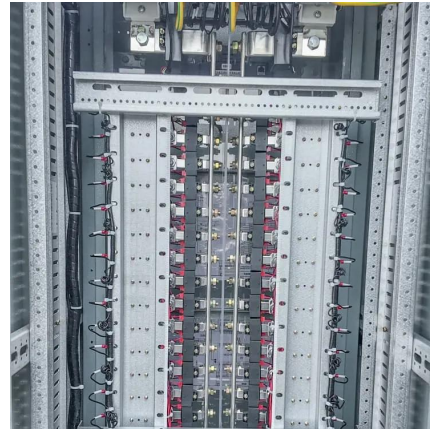
## [Maximum current in a power supply](#)

Aug 17, 2020 · The device sometimes starts with 3-3.2 A and quickly goes down to less 3A and continues to 2.5A. I know the bigger the current in a power supply the better, but currently, I ...



## What is the maximum output current of a portable storage ...

Dec 1, 2025 · The maximum output current of a portable storage battery is a crucial parameter that directly impacts its performance and applicability. As a seasoned supplier of portable ...



## Why does it matter to adjust current if maximum power supply ...

Nov 10, 2025 · I found a "0-32V 0-5A Portable Adjustable DC Power Supply 110V/220V" (link available if I'm allowed to write it here) and I wonder why we should have to adjust current ...

## Contact Us

---

For catalog requests, pricing, or partnerships, please visit:  
<https://www.llsolarenergy.co.za>

**Scan QR Code for More Information**



<https://www.lsolarenergy.co.za>