

Network solar container communication station wind and solar complementary distribution





Overview

What is a wind-solar-hydro-thermal-storage multi-source complementary power system?

Figure 1 shows the structure of a wind-solar-hydro-thermal-storage multi-source complementary power system, which is composed of conventional units (thermal power units, hydropower units, etc.), new energy units (photovoltaic power plants, wind farms, etc.), energy storage systems, and loads.

Do wind power and photovoltaic stations complement each other?

Typically, wind power and photovoltaic stations are situated at different locations, necessitating the study and analysis of wind speed-radiation complementarity across various regions. This study focuses on wind power stations and photovoltaic stations in Qinghai and Gansu provinces to explore their complementarity.

What is the complementary coefficient between wind power stations and photovoltaic stations?

Utilizing the clustering outcomes, we computed the complementary coefficient R between the wind speed of wind power stations and the radiation of photovoltaic stations, resulting in the following complementary coefficient matrix (Fig. 17.).

Can a solar-wind system meet future energy demands?

Accelerating energy transition towards renewables is central to net-zero emissions. However, building a global power system dominated by solar and wind energy presents immense challenges. Here, we demonstrate the potential of a globally interconnected solar-wind system to meet future electricity demands.



Network solar container communication station wind and solar com



[Wind-solar complementarity and effective use of distribution network](#)

Aug 1, 2019 · The case study considers the connections of multiple co-located hybrid wind and PV generators across a representative distribution network in order to identify the value of diverse ...

[Design of a Wind-Solar Complementary Power Generation ...](#)

Apr 27, 2025 · In order to improve the utilization efficiency of wind and photovoltaic energy resources, this paper designs a set of wind and solar complementary power generation ...



[Globally interconnected solar-wind system ...](#)

May 15, 2025 · A globally interconnected solar-wind power system can meet future electricity demand while lowering costs, enhancing resilience, and ...



[Frontiers , Environmental and economic dispatching strategy ...](#)

Mar 19, 2024 · According to the hierarchical environmental and economic dispatching model and relevant basic data and parameters, in the upper model, the time shift characteristics of wind ...



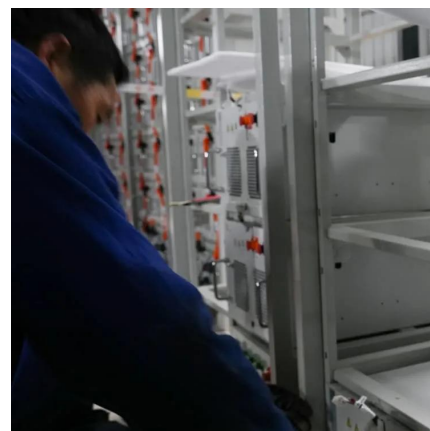
[A copula-based wind-solar complementarity coefficient: ...](#)

Mar 1, 2025 · A measure of wind-solar complementarity coefficient R is proposed in this paper. Utilizes the copula function to settle the Spearman and Kendall correlation coefficients ...



[How to integrate wind and solar complementarity in ...](#)

Dec 5, 2025 · The implementation of hybrid solar and wind power systems in community networks still faces certain obstacles, nevertheless. How do hybrid solar and wind systems contribute to ...



[Globally interconnected solar-wind system addresses future ...](#)

May 15, 2025 · A globally interconnected solar-wind power system can meet future electricity demand while lowering costs, enhancing resilience, and supporting a stable, sustainable ...



ASSESSING THE POTENTIAL AND COMPLEMENTARY

The invention relates to a communication base station stand-by power supply system based on an activation-type cell and a wind-solar complementary power supply system.



(PDF) Joint Planning of Transmission and ...

Jan 1, 2021 · This paper aims to study the joint planning method of power transmission and distribution network considering the complementary ...

Joint Planning of Transmission and Distribution Network ...

This paper aims to study the joint planning method of transmission and distribution network considering the complementary characteristics of wind-solar time and space. First, a wind ...



(PDF) Joint Planning of Transmission and Distribution Network

Jan 1, 2021 · This paper aims to study the joint planning method of power transmission and distribution network considering the complementary characteristics of wind-solar time and space.





[Frontiers , Environmental and economic ...](#)

Mar 19, 2024 · According to the hierarchical environmental and economic dispatching model and relevant basic data and parameters, in the upper ...



[Matching Optimization of Wind-Solar Complementary Power ...](#)

Sep 23, 2024 · The intermittency, randomness and volatility of wind power and photovoltaic power generation bring trouble to power system planning. The capacity configuration of integrated ...

Contact Us

For catalog requests, pricing, or partnerships, please visit:
<https://www.llsolarenergy.co.za>

Scan QR Code for More Information



<https://www.lsolarenergy.co.za>