

## Normal output power of inverter





## Overview

---

What are inverter specifications?

Specifications provide the values of operating parameters for a given inverter. Common specifications are discussed below. Some or all of the specifications usually appear on the inverter data sheet. Maximum AC output power This is the maximum power the inverter can supply to a load on a steady basis at a specified output voltage.

What is the nominal power of an inverter?

This is the first value that an inverter displays; for example, an indicative form could be 500 W / 1000 W maximum. In this case, the nominal power is 1000 W. The nomenclature in the image above is also used. This is the amount of power that the inverter is capable of supplying continuously under normal operating conditions.

How much power does an inverter need?

It's important to note what this means: In order for an inverter to put out the rated amount of power, it will need to have a power input that exceeds the output. For example, an inverter with a rated output power of 5,000 W and a peak efficiency of 95% requires an input power of 5,263 W to operate at full power.

What is rated inverter power?

Inverter power ( $P_i$ ) refers to the power output provided by an inverter, which converts direct current (DC) from sources such as batteries or solar panels into alternating current (AC) used by most household appliances. Rated inverter power represents the inverter's capacity, indicating the maximum volt-amperes (VA) it can handle.



## Normal output power of inverter

---



### [Inverter Specifications and Data Sheet](#)

2 days ago · The article provides an overview of inverter functions, key specifications, and common features found in inverter systems, along with an example of power calculations and ...

### [How To Read And Interpret An Inverter Specification](#)

4 days ago · Inverter specifications are technical information that describes an inverter's capabilities, characteristics, and limitations. They guide users in choosing an inverter that suits ...



### [Photovoltaic inverter output value](#)

A solar inverter or photovoltaic (PV) inverter is a type of power inverter which converts the variable direct current (DC) output of a photovoltaic solar panel into a utility frequency alternating ...

### [Understanding Inverter Rated Power: A Complete Guide for ...](#)

6 days ago · Inverter rated power refers to the maximum continuous power output that an inverter can supply under normal operating conditions. It is typically measured in watts (W)



or kilowatts ...



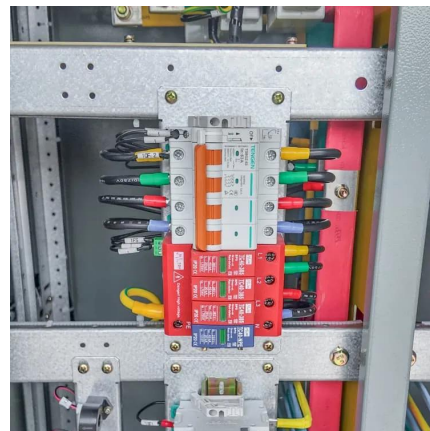
## Power of inverter

May 23, 2025 · Definition of power of inverter  
Power of inverter refers to the maximum power that the inverter can continuously and stably output under normal conditions. In addition, there is ...



## [Inverter Power Calculator, Formula, Inverter Calculation](#)

2 days ago · Inverter Power Formula: Imagine a solar panel system. The panels generate direct current (DC) electricity. But most appliances run on alternating current (AC). Here's where ...



## [Everything You Need to Know About Inverter Sizing](#)

Apr 20, 2025 · Inverter Power Outputs? Since inverters convert DC power to AC power the output of the inverter is measured in either power (kW AC) or current (amps) and voltage (typically ...







### Nominal and maximum power of an inverter: Are they the ...

Sep 20, 2023 · This is the first value that an inverter displays; for example, an indicative form could be 500 W / 1000 W maximum. In this case, the nominal power is 1000 W. The ...



## Contact Us

---

For catalog requests, pricing, or partnerships, please visit:  
<https://www.llsolarenergy.co.za>

### Scan QR Code for More Information



<https://www.llsolarenergy.co.za>