

Pack batteries in series and parallel





Overview

What is the difference between a series and parallel battery?

Series Connection: In a battery in series, cells are connected end-to-end, increasing the total voltage. **Parallel Connection:** In parallel batteries, all positive terminals are connected together, and all negative terminals are connected together, keeping the voltage the same but increasing the total current.

What is a battery pack configuration?

Battery pack configurations determine how much power a battery can provide and for how long. Whether you're choosing a battery pack for an electric vehicle, a robotics project, or an energy storage system, understanding the difference between series and parallel connections can help you make the best decision.

What are the basic principles of a battery pack design?

The diagram below shows the basic principles. In most pack designs the cells are connected in parallel blocks (when P is greater than 1) and then in series. This is an important factor in managing the battery configuration. However, we will also discuss connecting series strings of cell in parallel as a separate article.

How to assemble large battery packs?

When assembling large battery packs it is necessary to connect cells in series and parallel. Actually the normal method is to assemble them in parallel groups and then to assemble these groups in series. Firstly it is worth remembering what is meant by parallel and series.



Pack batteries in series and parallel



[Understanding Battery Pack Configurations: Series vs. Parallel ...](#)

Feb 17, 2025 · Battery pack configurations determine how much power a battery can provide and for how long. Whether you're choosing a battery pack for an electric vehicle, a robotics project, ...

[Series, Parallel, and Series-Parallel Connections of Batteries](#)

A series-parallel system is a combination of both series and parallel connections, forming a series-parallel circuit. Some components are connected in series, while others are connected ...



[Batteries in Series and Batteries in Parallel , Electrical4U](#)

Feb 24, 2012 · Key learnings: Battery Cells
Definition: A battery is defined as a device where chemical reactions produce electrical potential, and multiple cells connected together form a ...

[Series vs Parallel Battery Wiring: Key Differences, Pros & Cons](#)

Apr 8, 2025 · When using multiple batteries in a project, you have two primary wiring configurations--series and parallel. Each has distinct advantages depending on your needs, ...



[Batteries in Parallel vs Series, All You Need to Know](#)

Jan 20, 2024 · Series batteries require monitoring for voltage sag across individual cells, while parallel systems need attention to current sharing and terminal integrity. Redway Power ...



[Series vs Parallel Battery Wiring: The Ultimate 2025 Guide](#)

6 days ago · Learn the key differences between series and parallel battery wiring. Discover how to optimize voltage, capacity, and performance for your energy needs in 2025.



[How To Connect Batteries In Series and Parallel](#)

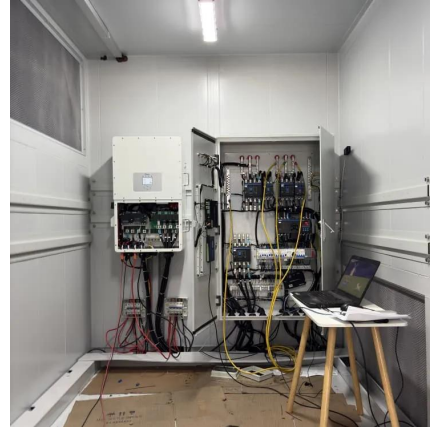
Dec 1, 2025 · Learn how to configure batteries in series, parallel, or series and parallel. Complete battery configuration guide for increased power at BatteryStuff !





[Series-Parallel Battery Configurations Guide 2025](#)

Mar 1, 2025 · Our ISO 9001-certified manufacturing facilities and IEC 62133-compliant designs ensure that every 18650 battery pack, Li-ion, lithium polymer, and LiFePO4 system delivers ...



Contact Us

For catalog requests, pricing, or partnerships, please visit:
<https://www.llsolarenergy.co.za>

Scan QR Code for More Information



<https://www.llsolarenergy.co.za>