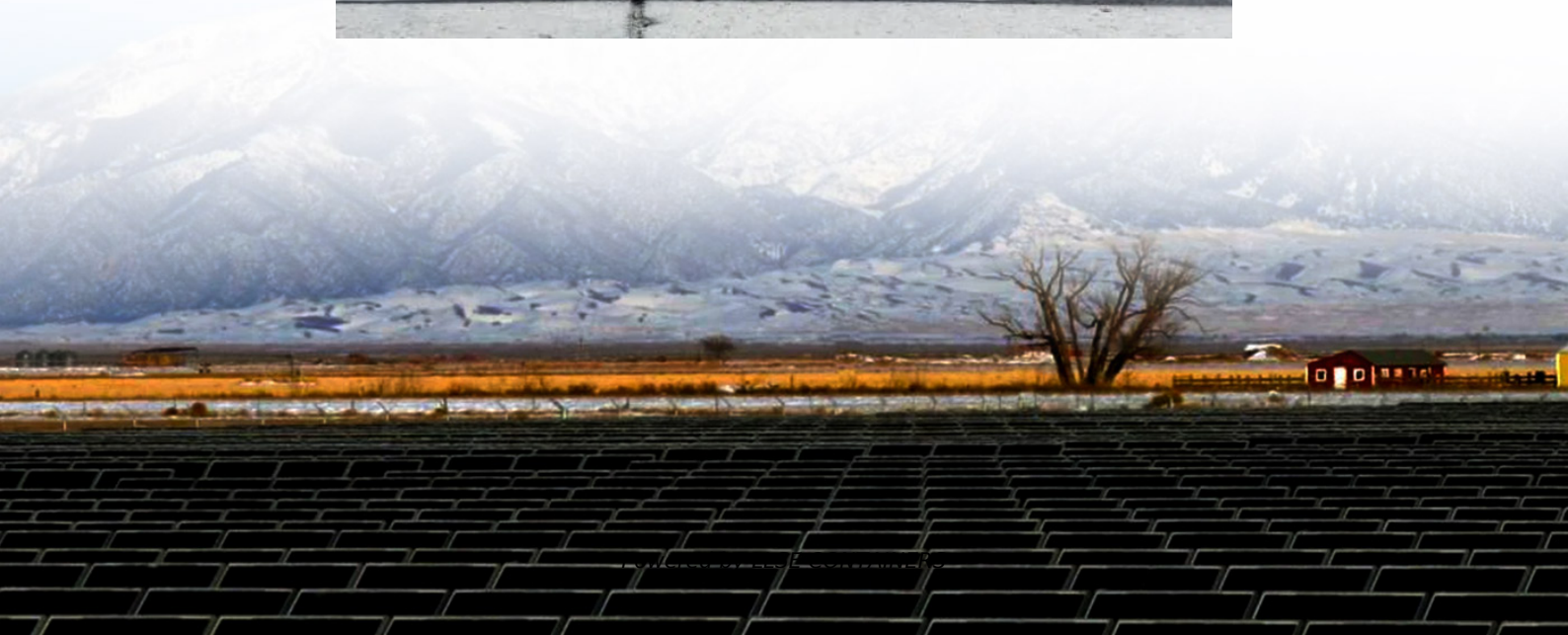


# Peak power of outdoor inverter





## Overview

---

What is peak power in inverter?

Peak power is usually two to three times the rated power. The rated power is the power at which the inverter is stabilized over a long period, whereas the peak power is only used for short periods of high power demand. [Learn More: How does an inverter work](#) [What causes the inverter to overload?](#)

.

How are power inverters rated?

Power inverters are rated based on their continuous (rated) power output and their peak power capability. The continuous power rating indicates how much power the inverter can provide steadily over time, while the peak power rating shows how much power it can supply in short bursts.

When can an inverter start?

Because these inductive loads require a large current to start at the moment of startup, the appliance can start normally only when the inverter peak power is greater than the starting power of the appliance. Under normal circumstances, the peak power is equal to 2 times the rated power. 2. Different types of load.

How big a power inverter is needed?

When determining how large a power inverter is needed, the difference between rated power and peak power must be distinguished. Peak power is also called peak surge power, which is the maximum power that can be maintained in a short period of time (usually within 20ms) when the power inverter starts.



## Peak power of outdoor inverter

---



### [Inverter Peak Power For Use: How Much is ...](#)

Oct 27, 2025 · This article will discuss inverter peak power, why it is essential, how it compares to continuous power, and other information ...

### [Inverter Peak Power vs Rated Power: What it is and Why It ...](#)

Apr 21, 2025 · Understand the key differences between inverter peak power and rated power. Discover the importance of both, how they affect your appliances.

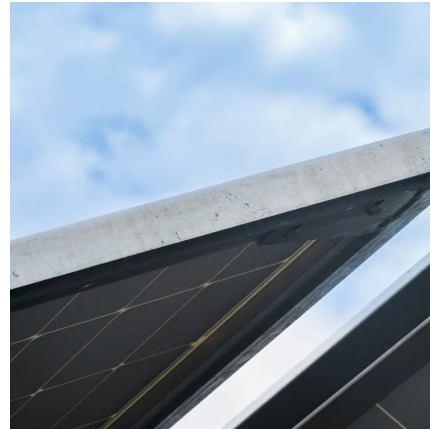


### [Inverter Specifications and Data Sheet](#)

2 days ago · The article provides an overview of inverter functions, key specifications, and common features found in inverter systems, along with ...

### [Inverter Specifications and Data Sheet](#)

2 days ago · The article provides an overview of inverter functions, key specifications, and common features found in inverter systems, along with an example of power calculations and ...



### [What does the peak power of the power inverter mean and...](#)

Dec 11, 2020 · The starting power of some electrical appliances is several times the power required during normal operation, but it only lasts for a short time. The significance of peak ...



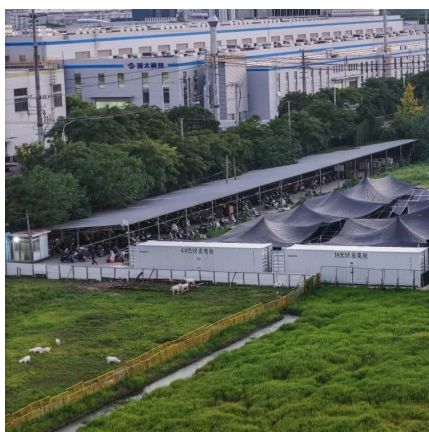
### [Inverter Peak Power vs Rated Power: What it ...](#)

Apr 21, 2025 · Understand the key differences between inverter peak power and rated power. Discover the importance of both, how they affect your ...



### [Useful guide to inverter peak power and how ...](#)

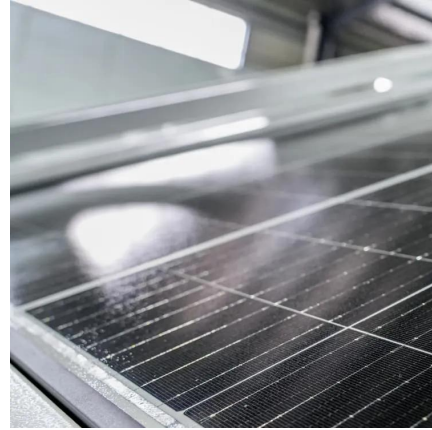
Dec 17, 2023 · In this article, we will provide an overall introduction to inverter peak power, including what it is and how it's different on various kinds of ...





## [How to Right-Size Solar Inverters for Peak Efficiency Gains](#)

Sep 2, 2025 · Stop guessing. Solar inverter sizing for peak efficiency and lower costs. See ILR targets, partial-load curves, and hybrid storage tactics for real gains.

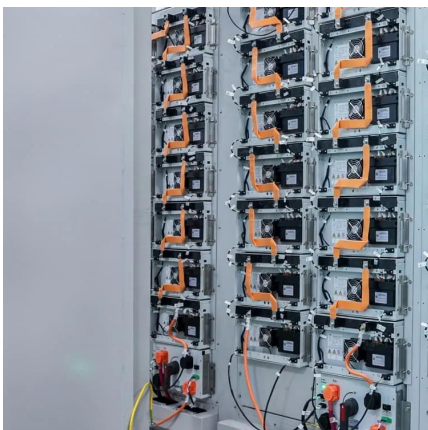


## [How to Right-Size Solar Inverters for Peak ...](#)

Sep 2, 2025 · Stop guessing. Solar inverter sizing for peak efficiency and lower costs. See ILR targets, partial-load curves, and hybrid storage ...

## [Understanding Rated Power vs Peak Power: What It](#)

When choosing an inverter for your camping, caravanning, or 4WDing adventures, understanding the difference between rated power and peak power is crucial. These terms describe the ...



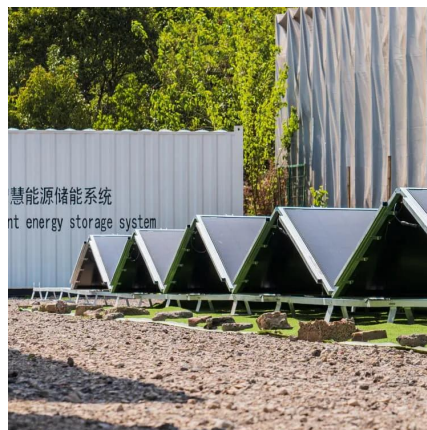
## [Inverter Peak Power For Use: How Much is Enough?](#)

Oct 27, 2025 · This article will discuss inverter peak power, why it is essential, how it compares to continuous power, and other information you need to know.



### [What is the Peak Output Power of a Power Inverter?](#)

May 25, 2022 · The continuous output power is the rated output power, and the peak output power is generally twice the rated output power. It is worth mentioning that the operating ...



### [Useful guide to inverter peak power and how to choose an inverter](#)

Dec 17, 2023 · In this article, we will provide an overall introduction to inverter peak power, including what it is and how it's different on various kinds of load. And also, we will list some ...

## Contact Us

---

For catalog requests, pricing, or partnerships, please visit:  
<https://www.llsolarenergy.co.za>

**Scan QR Code for More Information**



<https://www.lsolarenergy.co.za>